



Distributed by:  
 PumpBiz, Inc  
 800-PumpBiz (786-7249)  
 www.PumpBiz.com



# FLOMAX<sup>®</sup> 5 and 8

## Double Seal Self-Priming Centrifugal Pump

MP Pumps has redesigned its Double Seal Flomax pumps to provide a more robust and compact design.

The patent pending design has relocated the barrier fluid accumulator onto the body of the pump creating a more compact footprint, eliminating external plumbing connections for the grease fitting cartridge resulting in decreased system costs and greater pump reliability.

The barrier fluid accumulator pressurizes the seal cavity to a higher pressure thus eliminating the possibility of the process fluid being transferred to enter the seal chamber. The constant presence of the barrier fluid allows the pump to operate in a dry run condition for increased hours of running and makes them ideal for handling abrasive fluids.

These pump types have proven success in various hard-to-handle applications including tank unloading, machine chip conveying, and bentonite handling in horizontal drilling applications.

### SPECIFICATIONS:

- Construction** ..... **Cast Iron**
- Ports – Flomax 5:** ..... **1 -1/2" x 1-1/2" NPT**  
**Flomax 8:** ..... **2" x 2" NPT**
- Flapper** ..... **Buna N**
- Impellers**..... **Cast Iron, Semi-open, Balanced**
- Mechanical Seal**..... **Type 31, Silicon Carbide vs.**  
 ..... **Silicon Carbide (Inboard)**

#### Mounting Options:

- PumPak<sup>®</sup>
- Pedestal
- Engine
- Electric Motor
  - 56C Frame
  - 145TC Frame
- Hydraulic

#### Flows to 170 GPM:

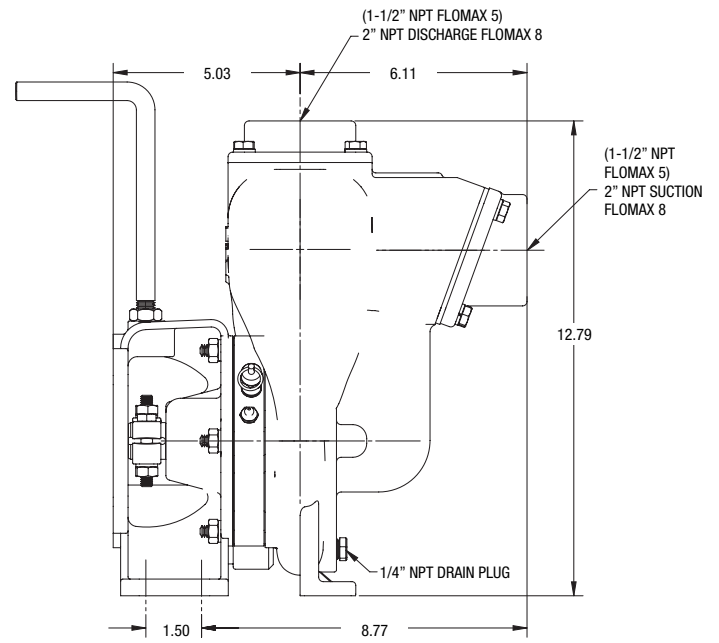
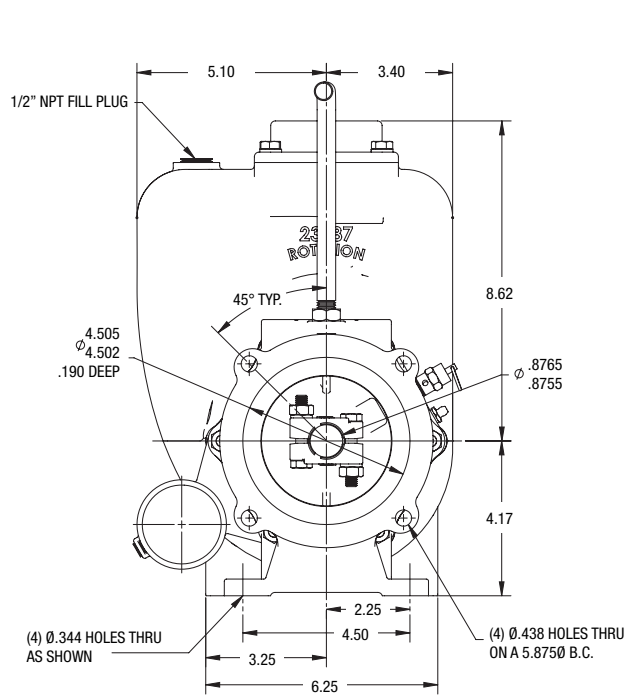
#### Pressures To 95 TDH:

#### Applications:

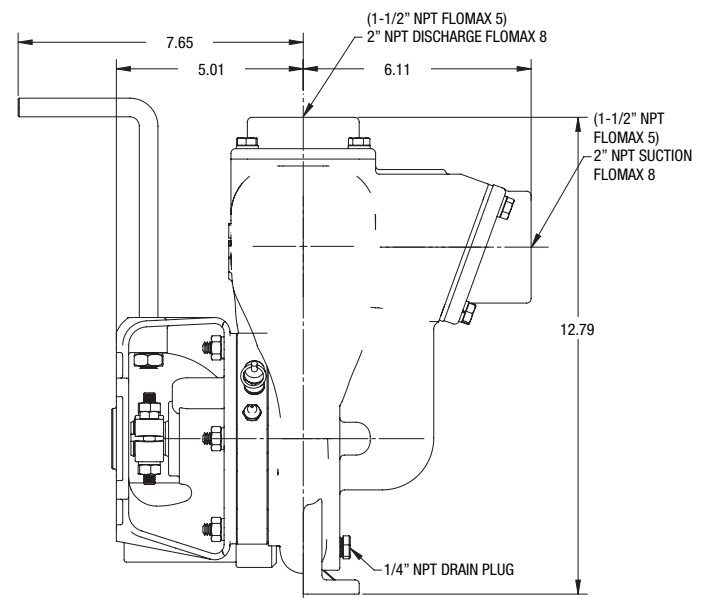
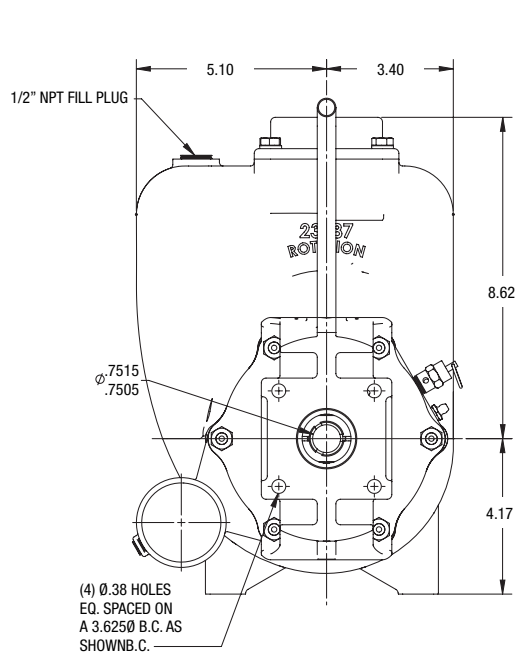
- Bentonite Mixing
- Tank Unloading
- Machine Chip Conveying
- Abrasive Fluid Handling

#### PATENT PENDING

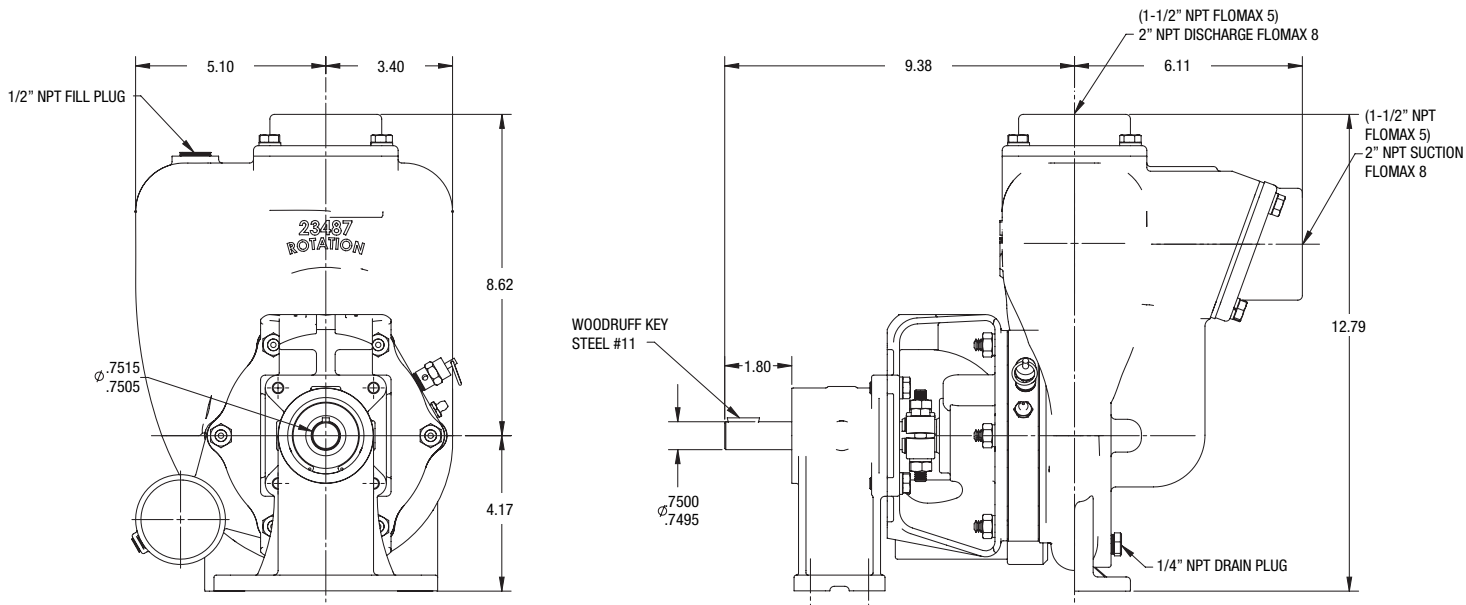
## FLOMAX® 5 and 8 Double Seal Electric Motor Pumpak Dimensions



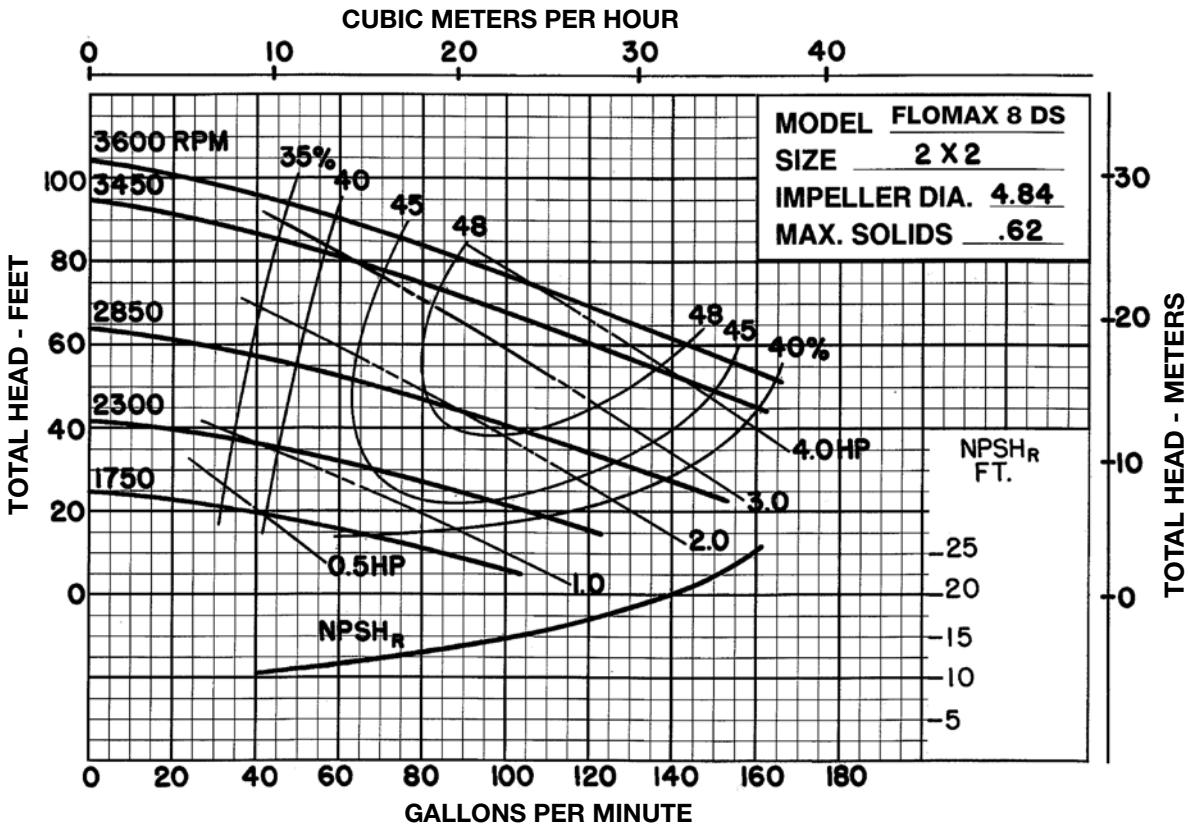
## FLOMAX® 5 and 8 Double Seal Pedestal & Engine Pumpak Dimensions



# FLOMAX® 5 and 8 Double Seal Pedestal Dimensions



**FLOMAX® 5 and 8 Double Seal Performance Curves**



**FLOMAX® 5 and 8 Double Seal Performance Curves**

