



MARCH PUMPS

1819 PICKWICK AVE., GLENVIEW, IL 60026-1306, U.S.A
 PHONE: (847) 729-5300 - FAX: (847) 729-7062
 WWW.MARCHPUMP.COM

AC-4C-MD, BC-4C-MD
 AC-4A-MD, BC-4A-MD
 BC-4K-MD

DESCRIPTION:

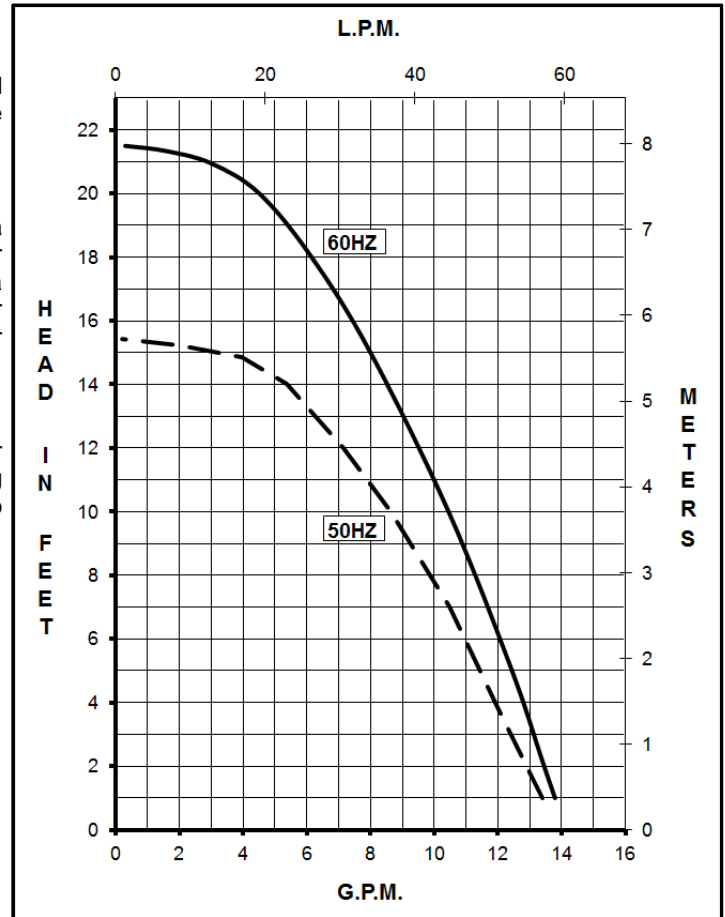
Series 4 are centrifugal magnetic drive pumps, eliminating the need for a shaft seal. Pumps can be serviced with a screwdriver. See the parts list for a breakdown of parts.

OPERATION:

Pumps are not self-priming, lack a suction lift, and thus require a **flooded suction**. Pumps **cannot be run dry** because the impeller requires the liquid being pumped for lubrication. For liquids with a specific gravity greater than water, have a higher viscosity, or for elevated temperatures, a trimmed impeller may be necessary. For application assistance, contact March Pump.

LIMITED WARRANTY:

March pumps are guaranteed only against defects in workmanship or materials for a period of one year from date of manufacture pumping water. For the complete warranty and to register online go to www.marchpump.com/warranty-registration



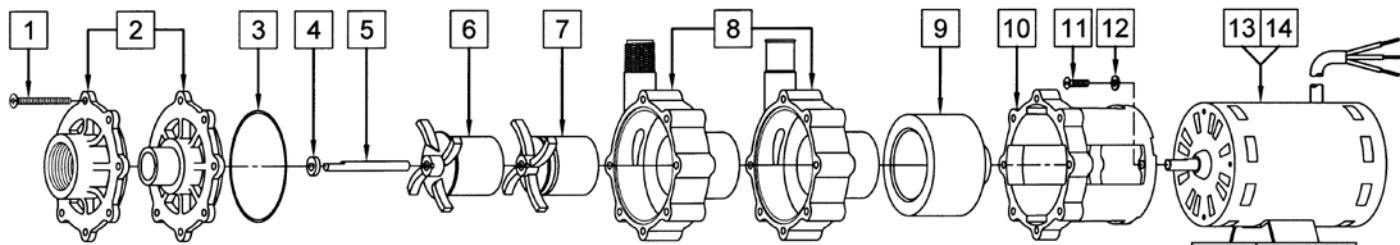
SPECIFICATIONS		AC-4C-MD	AC-4A-MD	BC-4C-MD	BC-4A-MD	BC-4K-MD	
Model Abbreviations		C/K: Threaded Inlet/Outlet, A: Smooth Inlet/Outlet, K: Kynar, C/A: Polypropylene					
Max Flow	60Hz - 50Hz	14 gpm - 50 lpm					
Max Head	60Hz - 50Hz	21.5 ft / 9.3 psi - 4.7 m					
Inlet - Outlet		1" FPT - 1/2" MPT	1" OD - 3/4" OD	1" FPT - 1/2" MPT	1" OD - 3/4" OD	1" FPT - 1/2" MPT	
Max Internal Pressure		50 psi / 3.4 bar				75 psi / 5 bar	
Max Liquid Temperature		190°F / 87°C				200°F / 93°C	
Overall Pump Size (H x W x L)	115V	Inches	5.57 x 5.11 x 9.77	5.57 x 5.11 x 10.34	5.65 x 5.36 x 10.18	5.65 x 5.36 x 10.74	5.65 x 5.36 x 10.18
		cm	14.1 x 12.9 x 24.8	14.1 x 12.9 x 26.2	14.1 x 13.6 x 25.8	14.1 x 13.6 x 27.2	14.1 x 13.6 x 25.8
	230V	Inches	5.57 x 5.07 x 10.09	5.57 x 5.07 x 10.65	5.65 x 5.36 x 10.18	5.65 x 5.36 x 10.74	5.65 x 5.36 x 10.18
		cm	14.1 x 12.8 x 25.6	14.1 x 12.8 x 27.0	14.1 x 13.6 x 25.8	14.1 x 13.6 x 27.2	14.1 x 13.6 x 25.8
Packed Weight	115V	8.05 lbs / 3.65 kg		8.15 lbs / 3.69 kg	8.15 lbs / 3.69 kg	8.40 lbs / 3.81 kg	
	230V	7.50 lbs / 3.40 kg		8.15 lbs / 3.69 kg	8.15 lbs / 3.69 kg	8.40 lbs / 3.81 kg	
Models		AC-4C-MD & AC-4A-MD		BC-4C-MD, BC-4A-MD, & BC-4K-MD			
		60Hz	50Hz	60Hz	50Hz		
Motor Type		AC: Air Cooled		BC: Blast Cooled (Models have an encapsulated impeller magnet)			
Rating / Duty		U.L. listed motor / Continuous		U.L. listed motor / Continuous			
1Ph	115V	Watts - Amps		179 - 1.9		125 - 1.9	
		165 - 0.75		126 - 0.75		121 - 0.75	
	230V	Hp / Kw - Rpm		1/12 - 3450		0.074 - 2850	
1/12 - 3450		0.062 - 2850		1/10 - 3450			
Electrical Connection		3 ft (0.9 m) Cord		3 ft (0.9 m) Cord			
Materials in Contact With Solution:		AC-4C-MD & AC-4A-MD:		Polypropylene, Ceramic, Buna N, Ceramic Magnet			
		BC-4C-MD & BC-4A-MD:		Polypropylene, Ceramic, Viton			
		BC-4K-MD:		Kynar/Carbon Filled, Viton, Ceramic			

Motors are available in different electrical configurations such as 115V 50/60Hz, and 230V 50/60Hz, 1 phase.

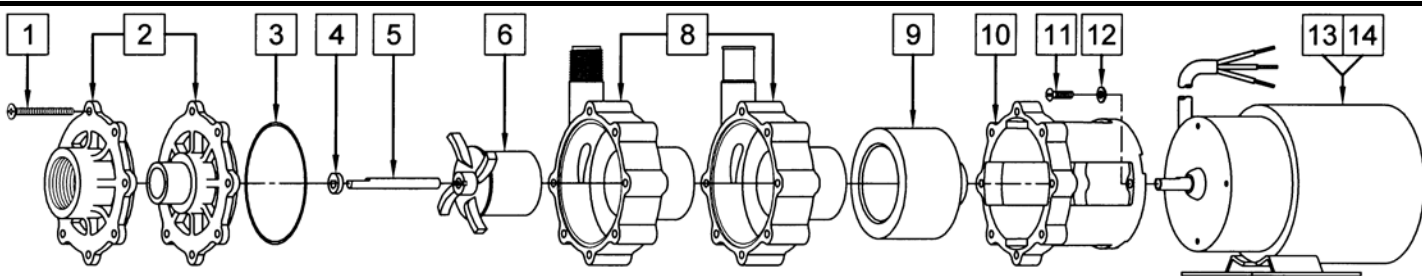
All specifications & data are based on pumping water & are intended as a guideline only. Specifications may vary with different motors.

NOTE: When attaching the Drive Magnet to the motor shaft, position the face of the Drive Magnet 1/16 inch below the face of the Motor Bracket.

PARTS LIST



#	DESCRIPTION	MATERIAL	AC-4C-MD	AC-4A-MD	QTY.	AC-4C-MD	AC-4A-MD
1	Screw	Stainless Steel	#8-32 x 1-3/4 Lg.		7	0150-0021-1000	
2	Cover	Polypropylene	1 FPT Inlet	1 OD Inlet	1	0150-0032-1000	0150-0150-1000
3	"O" Ring	Buna-N	1/16 CS x 3 OD		1	0135-0007-1000	
	"O" Ring (Option)	Viton	1/16 CS x 3 OD		1	0135-0023-1000	
	"O" Ring (Option)	Viton/Teflon	0.070 CS x 3-1/8 OD		1	0150-0171-1000	
4	Thrust Washer	Ceramic			1	0130-0028-1000	
5	Shaft	Ceramic			1	0130-0024-1000	
6	Encapsulated Impeller (Option)	Polypropylene			1	0145-0033-0200	
7	Impeller	Polypropylene/Ceramic Magnet			1	0145-0011-0100	
8	Rear Housing w/Thrust Washer	Polypropylene/Ceramic	1/2 MPT Outlet	3/4 OD Outlet	1	0150-0031-0100	0150-0159-0100
9	Drive Magnet				1	0145-0027-0100	
10	Motor Bracket	Plastic			1	0145-0010-1000	
11	Screw	Stainless Steel	#8-32 x 5/8 Lg.		4	0618-0027-1000	
12	Washer Flat	Stainless Steel	#8		4	0858-0004-1000	
13	AC Motor, 115V, 50/60Hz				1	0145-0012-1000	
14	AC Motor, 230V, 50/60Hz				1	0145-0029-1000	



#	DESCRIPTION	MATERIAL	BC-4C-MD	BC-4A-MD	QTY.	BC-4C-MD	BC-4A-MD
1	Screw	Stainless Steel	#8-32 x 1-3/4 Lg.		7	0150-0021-1000	
2	Cover	Polypropylene	1 FPT Inlet	1 OD Inlet	1	0150-0032-1000	0150-0150-1000
3	"O" Ring	Viton	1/16 CS x 3 OD		1	0135-0023-1000	
	"O" Ring (Option)	Buna-N	1/16 CS x 3 OD		1	0135-0007-1000	
	"O" Ring (Option)	Viton/Teflon	0.070 CS x 3-1/8 OD		1	0150-0171-1000	
4	Thrust Washer	Ceramic			1	0130-0028-1000	
5	Shaft	Ceramic			1	0130-0024-1000	
6	Encapsulated Impeller	Polypropylene			1	0145-0033-0200	
6	Encapsulated Impeller (Option)	Polypropylene w/Carbon Bushing			1	0145-0033-0300	
8	Rear Housing w/Thrust Washer	Polypropylene/Ceramic	1/2 MPT Outlet	3/4 OD Outlet	1	0150-0031-0100	0150-0159-0100
9	Drive Magnet				1	0145-0027-0100	
10	Motor Bracket	Plastic			1	0145-0010-1000	
11	Screw	Stainless Steel	#8-32 x 5/8 Lg.		4	0618-0027-1000	
12	Washer Flat	Stainless Steel	#8		4	0858-0004-1000	
13	BC Motor, 115V, 50/60Hz				1	0145-0035-1000	
14	BC Motor, 230V, 50/60Hz				1	0145-0036-1000	

#	DESCRIPTION	MATERIAL	SIZE (Inches)	QTY.	BC-4K-MD
1	Screw	Stainless Steel	#8-32 x 1-3/4 Lg.	7	0150-0021-1000
2	Cover	Kynar	1 FPT Inlet	1	0150-0124-1000
3	"O" Ring	Viton	1/16 CS x 3 OD	1	0135-0023-1000
	"O" Ring (Option)	Buna-N	1/16 CS x 3 OD	1	0135-0007-1000
	"O" Ring (Option)	Viton/Teflon	0.070 CS x 3-1/8 OD	1	0150-0171-1000
4	Thrust Washer	Ceramic		1	0130-0028-1000
5	Shaft	Ceramic		1	0130-0024-1000
6	Encapsulated Impeller	Kynar		1	0145-0039-0200
8	Rear Housing w/Thrust Washer	Kynar/Ceramic	1/2 MPT Outlet	1	0150-0123-0100
9	Drive Magnet			1	0145-0027-0100
10	Motor Bracket	Plastic		1	0145-0010-1000
11	Screw	Stainless Steel	#8-32 x 5/8 Lg.	4	0618-0027-1000
12	Washer Flat	Stainless Steel	#8	4	0858-0004-1000
13	BC Motor, 115V, 50/60Hz			1	0145-0035-1000
14	BC Motor, 230V, 50/60Hz			1	0145-0036-1000

NOTE: Contact Factory for other materials and/or parts not listed.

0145-0023-1000 R19