



**Series: PFG3022,
PFG3062, PFG3032,
PFG3042, PFG5002,
PFG5022, PFG5062,
PFG5032, PFG5042,
PFG7532, PFG7542**

**3, 5 & 7.5HP•3450RPM•60Hz
Submersible Grinder Pump**

Description

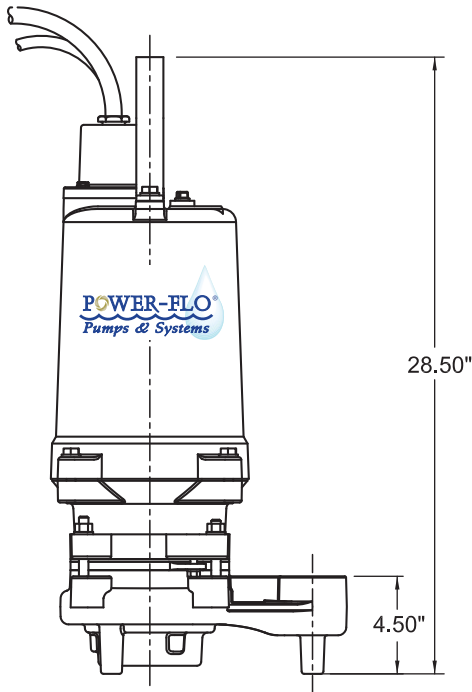
Designed to reduce domestic, commercial, institutional and light industrial sewage to a finely ground slurry.

DISCHARGE	2" NPT Vertical, Bolt-on Flange
LIQUID TEMPERATURE	104°F (40°C) Intermittent
VOLUTE	Cast Iron, Class 30
MOTOR HOUSING	Cast Iron, Class 30
SEAL PLATE	Cast Iron, Class 30
IMPELLER	12 Vane, Vortex, Bronze
SHREDDING RING	Stainless Steel
CUTTER	Stainless Steel
SHAFT	Stainless Steel
SQUARE RINGS	Buna-N
HARDWARE	Stainless Steel
PAINT	Air dry enamel
SEAL	Tandem Double Mechanical, Oil Filled Reservoir, Upper -Carbon/Ceramic/Buna-N, Lower - Silicon Carbide/Silicon Carbide/Viton Stainless Hardware
UPPER BEARING	Single row, Ball, Oil Lubricated
INTERMEDIATE BEARING	Single row, Ball, Oil Lubricated
LOWER BEARING	Sleeve, Oil Lubricated
POWER CORD	30 ft. Cord . Pressure grommet for Sealing and Strain Relief.
MOTOR	Oil Filled, Squirrel Cage Induction, Class F Insulation
SINGLE PHASE	Capacitor Start/Capacitor Run. Requires overload protection in the control panel, Requires starter or control panel which includes capacitors.
THREE PHASE	Dual Voltage 230/460. Requires overload protection in control panel
MOISTURE SENSOR	Normally Open (NO). Requires relay in control panel
TEMPERATURE SENSOR	Normally Closed (NC). Requires relay in control panel

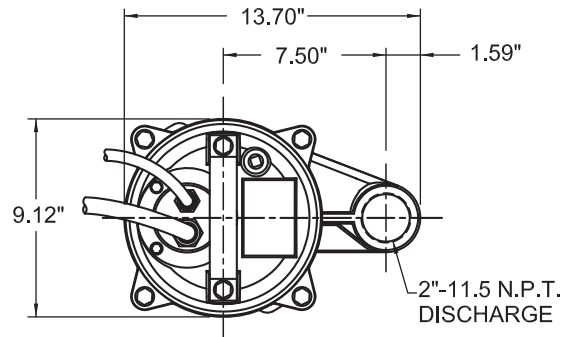
Series: PFG



Submersible Grinder Pumps 2" Discharge, 3, 5 & 7.5 HP

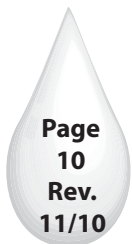


IMPORTANT! - Pump Suction **MUST** be a minimum of 4" from basin floor with use of legs, stand or slide rail system.



MODEL	HP	Hz	Volts/Ph	RPM	Full Load Amps	Locked Rotor Amps	NEMA Start Code	Cord Type	Cord Size	Cord O.D.
PFG3022	3	60	230/1	3450	26	90	H	SOW	12/3	.67
PFG3062	3	60	208/3	3450	17.0	65.0	J	SOW	10/4	.75
PFG3032	3	60	230/3	3450	14.5	62.0	K	SOW	10/4	.75
PFG3042	3	60	460/3	3450	7.2	31.0	K	SOW	10/4	.75
PFG5022	5	60	230/1	3450	39.0	136.0	H	SOW	12/3	.67
PFG5062	5	60	208/3	3450	25.0	122.0	K	SOW	10/4	.75
PFG5032	5	60	240/3	3450	21.9	120.0	L	SOW	10/4	.75
PFG5042	5	60	460/3	3450	11.0	60.0	L	SOW	10/4	.75
PFG7532	7.5	60	230/3	3450	22.3	136.0	J	SOW	10/4	.75
PFG7542	7.5	60	460/3	3450	11.2	68.0	J	SOW	10/4	.75

Moisture & Temperature sensor cable for all other models is 18/5 SOW. 0.47 inches O.D.



IMPORTANT!

These pumps are not approved for use in swimming pools, recreational water parks, or installations where human contact with pumped media is a common occurrence.



Series: PFG

**Submersible Grinder Pumps
2" Discharge, 3, 5 & 7.5 HP**

