

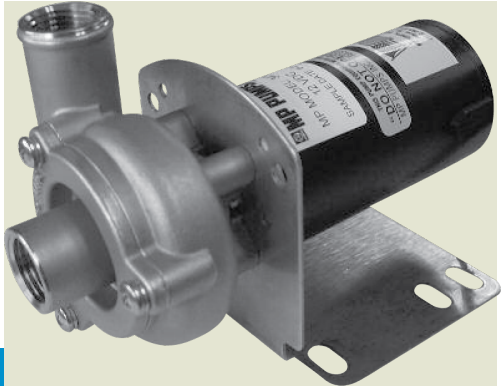


FRX 50

1/2" x 1/2" End Suction Centrifugal Pump

The FRX 50 is a high performance 316 stainless steel circulator pump making it ideal for marine, commercial, and industrial transfer of chemicals or potable water.

All pumping parts are 316 stainless steel for superior corrosion resistance when pumping chemical compounds. A carbon / ceramic / Viton bellows shaft seal is standard. The FRX 50 series is available with 1/2" NPT and 1" hose barb port configurations. Marine ignition protected motors available.



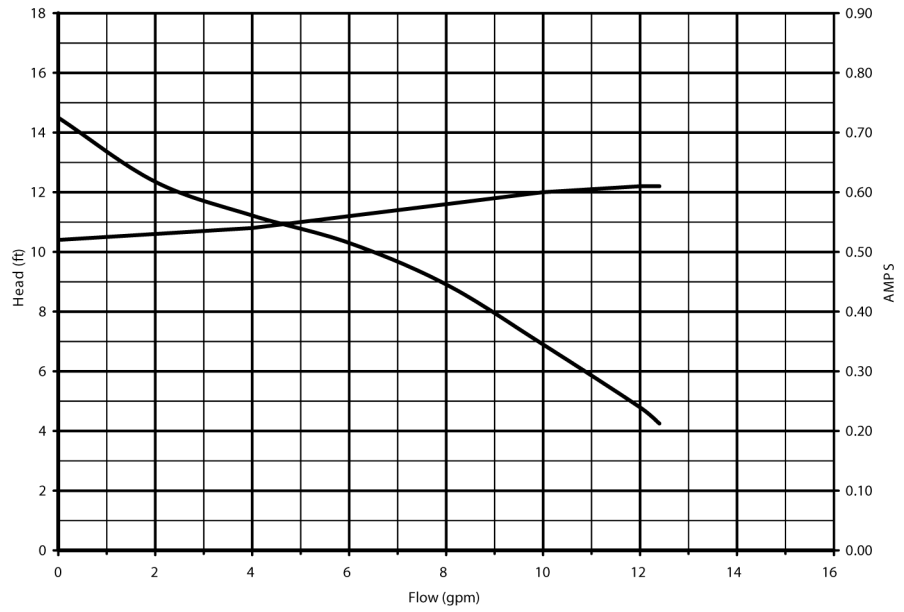
SPECIFICATIONS:

- Materials of Construction 316 stainless steel
- Flow Up to 12 GPM
- Head Feet Up to 16'
- Impeller 316 stainless steel, semi-open
- Drive Options Close coupled 115V AC
 - Close coupled 12V DC
 - Close coupled 230V AC
 - Close coupled 24V DC
- Seal Carbon / ceramic / Viton bellows 150 PSI
 - Special seals upon request
 - Standard - carbon / ceramic / Viton

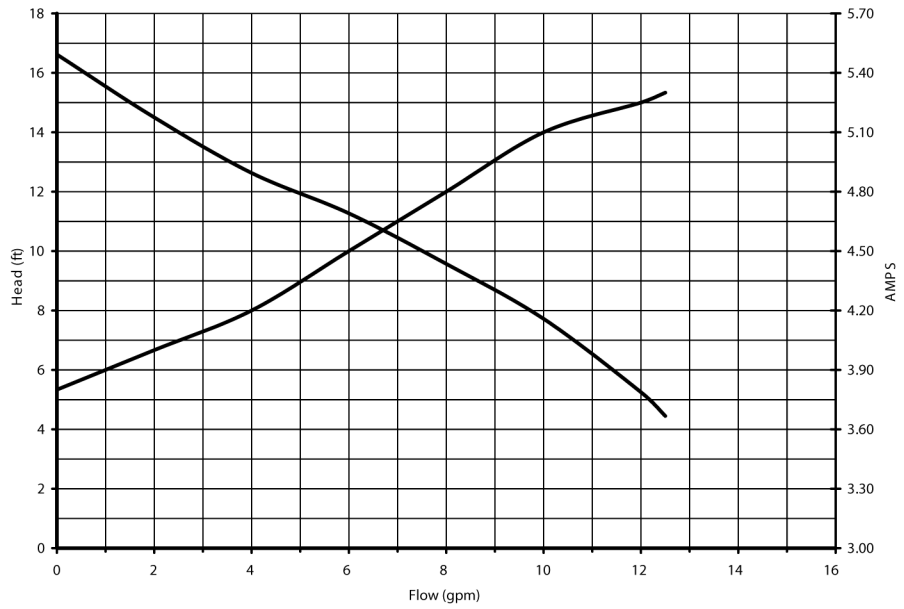
Application:

- Agricultural
- Commercial
- Industrial
- Marine
- OEM
- Transportation

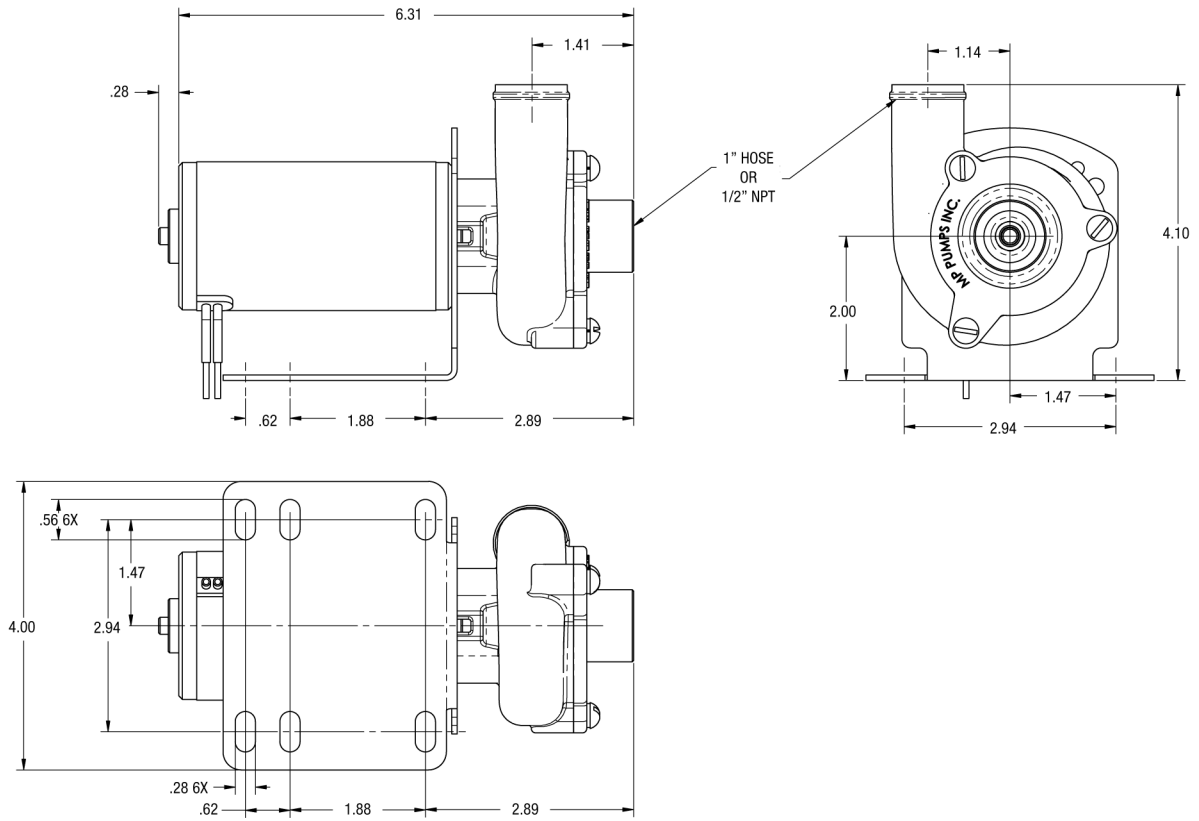
115V AC MOTOR



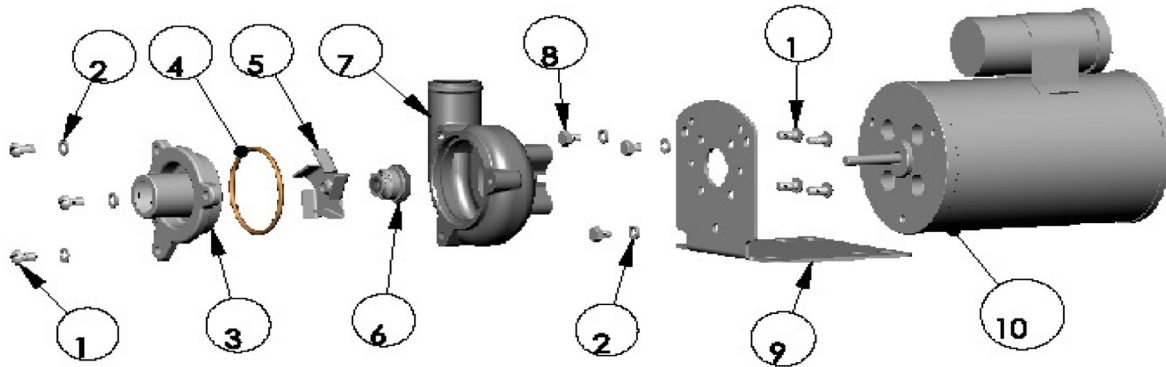
12V DC MOTOR FOR 24 V DC MOTOR DIVIDE AMPS BY TWO



FRX 50



34800 BENNETT • FRASER, MI 48026-1686
(586) 293-8240 • FAX (586) 293-8469
(800) 563-8006 • www.mppumps.com

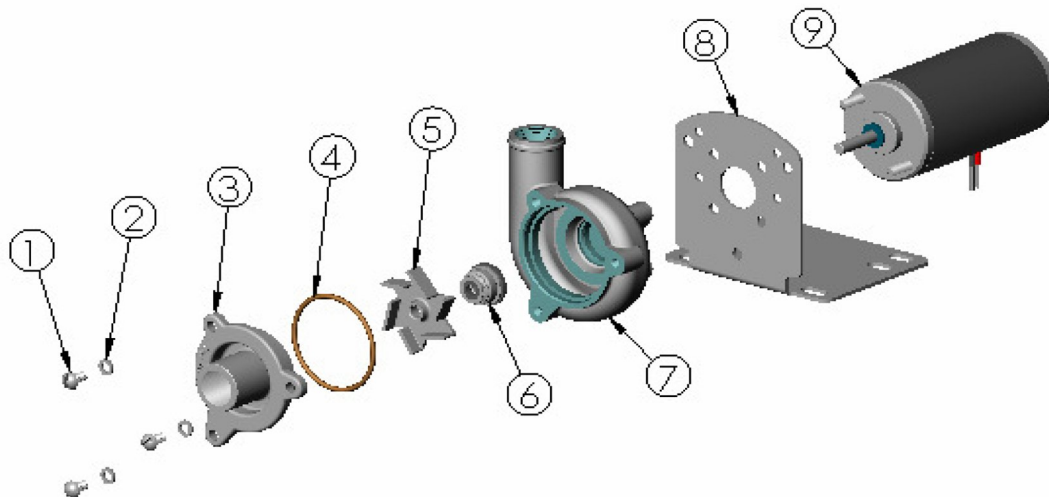


ITEM NO.	PART NO.	DESCRIPTION	QTY.
1	34836	SCREW - S.S. - 10-24 X .5	7
2	21621	LOCKWASHER - S.S. - #10 X 3/64	6
* 3	34728	COVER S.S. - MACH.	1
* 4	33472	O-RING VITON - AS 568-133	1
* 5	34525	IMPELLER - 316 S.S.	1
* 6	34527	MECH SEAL- VITON	1
* 7	34726	HOUSING S.S.- MACH.	1
8	35034	HEX HEAD SCREW S.S.- #10-24 X .25	3
9	34736	MOTOR BASE - 316 S.S.	1
10	34732	ELEC. MTR. - 1/10 H.P. 115 VAC	1

*- RECOMMENDED REPLACEMENT PARTS



34800 BENNETT • FRASER, MI 48026-1686
 (586) 293-8240 • FAX (586) 293-8469
 (800) 563-8006 • www.mppumps.com



ITEM NO.	PART NO.	DESCRIPTION	QTY.
1	34836	SCREW S.S. - #10-24 X .375	3
2	21621	LOCKWASHER S.S.- #10 X 3/64	3
*	3	34728 COVER S.S. - MACH.	1
*	4	33472 O-RING VITON - AS 568-133	1
*	5	34525 IMPELLER - 316 S.S.	1
*	6	34527 MECH SEAL- VITON	1
*	7	34726 HOUSING S.S. - MACH.	1
	8	34736 MOTOR BASE - 316 S.S.	1
		34733 ELECTRIC MOTOR- 12VDC	1
	9	34992 ELECTRIC MOTOR- 24VDC	1

*- RECOMMENDED REPLACEMENT PARTS



34800 BENNETT • FRASER, MI 48026-1686
 (586) 293-8240 • FAX (586) 293-8469
 (800) 563-8006 • www.mppumps.com