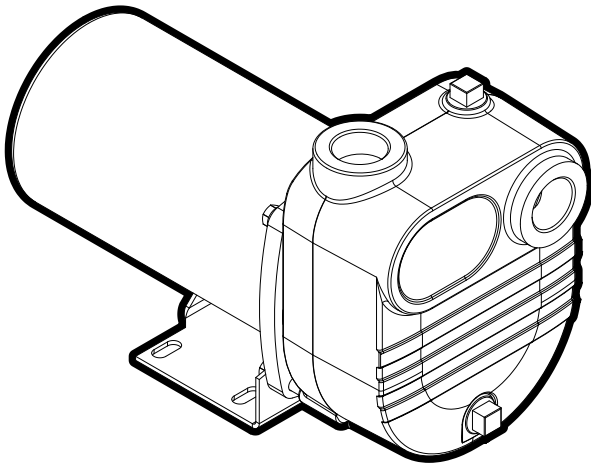


## Self-Priming FBSE-S 1/2 - 2 hp

**BOOK:** SPC-015  
**DATE:** Feb 1, 2010



### Features:

- **Volute:** Cast iron rugged construction with tapped openings provided for priming, venting and draining.
- **Impeller:** Semi open cast iron, Ideal for handling fertilizer, salt water, dirty water or other liquids. The impeller is blind hole tapped so the liquid will not corrode the shaft.
- **Seal:** Standard carbon/ceramic faces, Viton elastomers, 300 series stainless components.
- **Impeller:** Comes with a reliable industry standard motor. Motors range from 1/2 to 2 hp and use higher than NEMA service factor dual compartment motors.

### Applications:

- Irrigation
- Construction
- Mining
- Commercial
- Municipal
- Light Industrial
- Residential

### Specifications:

**Capacities:** to 126 gpm

**Heads:** to 70 feet

**Working Pressure:** 75 psi max

**Temperature:** 120 °F max

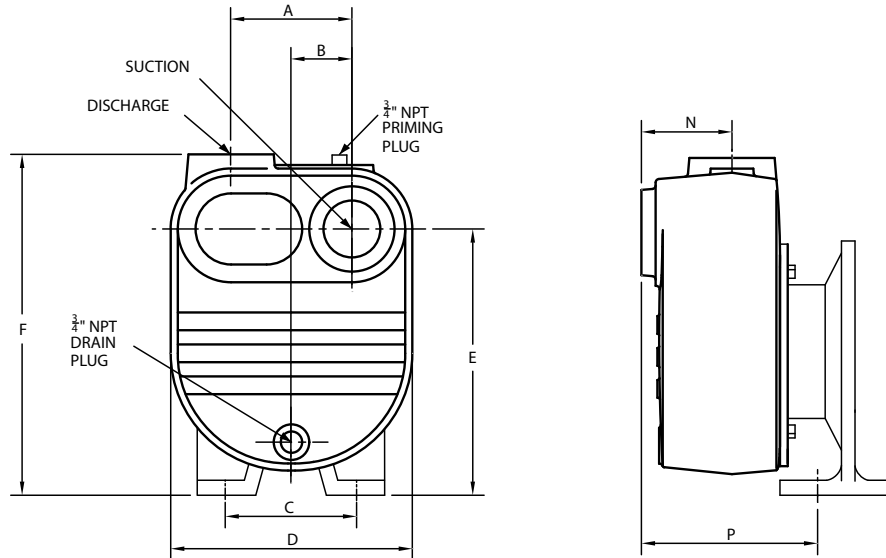
**Rotation:** clockwise viewed from motor end

**Pipe Connections:** NPT

HP	Discharge	Suction
1/2 - 1	1-1/4"	1-1/4"
1.5 - 2	2"	2"

## Self-Priming FBSE-S 1/2 - 2 hp

### Dimensional Drawings:



### Dimensions:

Group	Model	Suction	Discharge	A	B	C	D	E	F	N	P
801	BSE-S50	1-1/4	1-1/4	4.00	2.00	4.88	7.50	7.75	10.00	3.18	8.06
802	BSE-S75	1-1/4	1-1/4	4.00	2.00	4.88	7.50	7.75	10.00	3.18	8.06
803	BSE-S100	1-1/4	1-1/4	4.00	2.00	4.88	7.50	7.75	10.00	3.18	8.06
804	BSE-S150	2	2	4.25	2.12	4.88	8.50	8.50	11.12	3.18	7.37
805	BSE-S200	2	2	4.25	2.12	4.88	8.50	8.50	11.12	3.18	7.37
806	BSE-S300	2	2	4.25	2.12	4.88	8.50	8.50	11.12	3.18	7.37

**Note:** Dimensions are for estimating purposes only. Certified dimension drawings are available on request. All dimensions in inches.

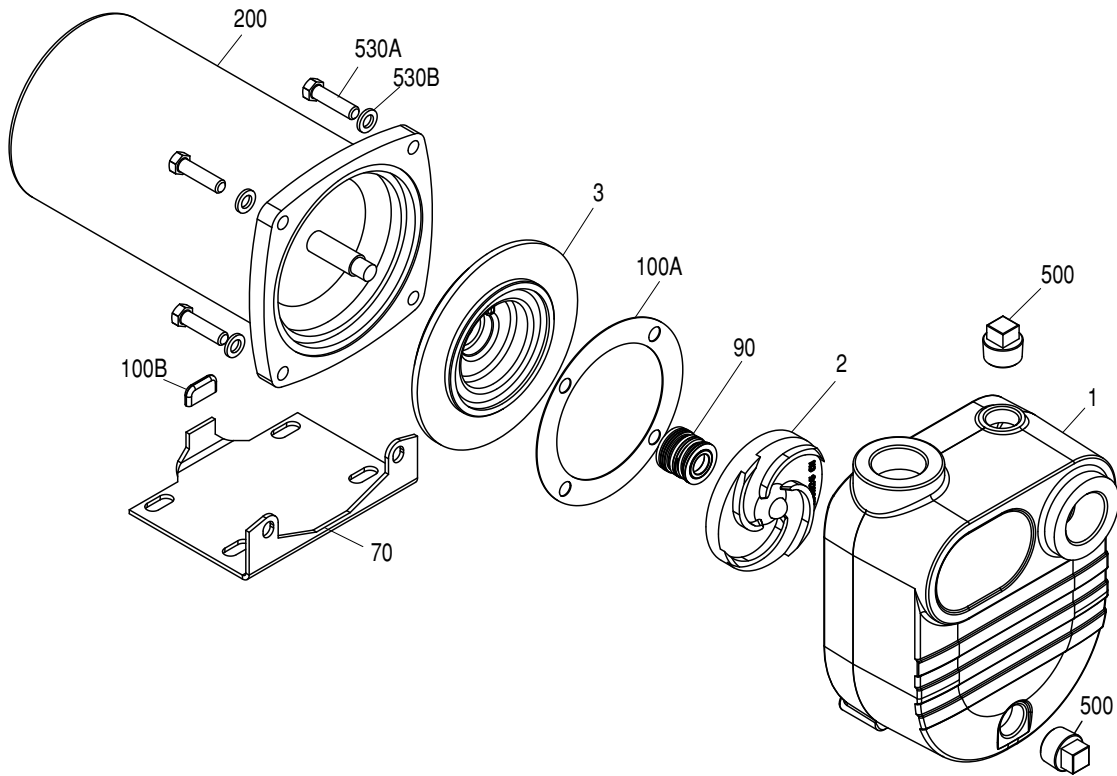
### Ordering Information:

Model	HP	Suction/Discharge	Order No.	Wt.
FBSE-50-K	.5	1-1/4" x 1-1/4"	92945005	18
FBSE-75-K	.75	1-1/4" x 1-1/4"	92945007	18
FBSE-100-K	1	1-1/4" x 1-1/4"	92945010	18
FBSE-150-K	1.5	2" x 2"	92945015	18
FBSE-200-K	2	2" x 2"	92945020	22
FBSE-50	.5	1-1/4" x 1-1/4"	92981005	41
FBSE-75	.75	1-1/4" x 1-1/4"	92981007	42
FBSE-100	1	1-1/4" x 1-1/4"	92981010	46
FBSE-150	1.5	2" x 2"	92981015	52
FBSE-200	2	2" x 2"	92981020	60

**Notes:** All dimensions in inches. All weight in pounds.

## Self-Priming FBSE-S 1/2 - 2 hp

### Exploded Parts Drawing:



### Materials and Parts:

Fig. No.	Part Description	Part No.					Materials of Construction
		FBSE-50	FBSE-75	FBSE-100	FBSE-150	FBSE-200	
1	Pump Case	305461001			305461002		Cast Iron, ASTM-A48 CL30
2	Impeller	305461003	305461004	305461005	305461006	305461007	Cast Iron, ASTM-A48 CL30
3	Seal Plate	305461008			305461009		Cast Iron, ASTM-A48 CL30
70	Motor Base	305461010					CRS
90	Mechanical Shaft Seal	305463029					GL-SiC/GL-SiCxVITON-SS
100A	Case Gasket	305463133			305463124		EPDM
100B	Base Protector	305463134					Vinyl
200	Motor (56-Z)	204073	204125	204154	204179	204186	Misc.
500	Pipe Plug 3/4" NPT (2 Req)	305463050					Cad-Plated Steel
530A	Hex Bolt/Stud - Volute (4 Req)	305463135			305463136		Zinc Plated Steel
530B	Bracket Lockwasher	305463137			305463032		Zinc Plated Steel
530C	Bracket - Hex Nut	n/a			305463033		Zinc Plated Steel

**Self-Priming FBSE-S** 1/2 - 2 hp

**Performance Curve:**

**3600 rpm**  
Nominal

