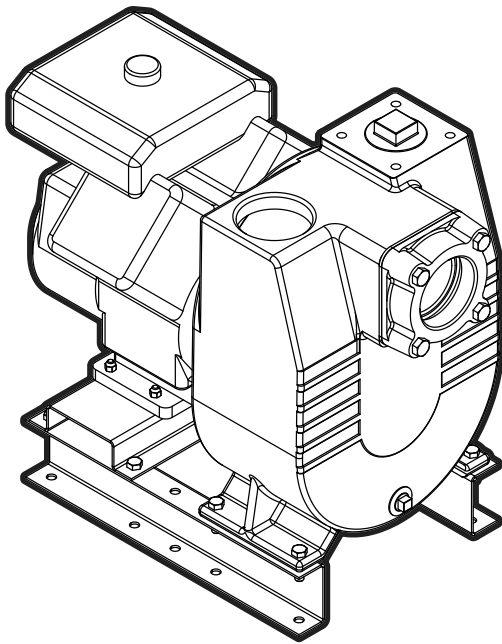


Gas Engine FMIG 13, 18, 27 hp

BOOK: GES-020
DATE: June 1, 2011



Features:

- **Volute:** Cast gray iron rugged construction. Self-priming with priming and drain plugs. Removable front cover features a built in check valve to facilitate priming.
- **Impeller:** Cast iron semi-open, two vane type, capable of handling spherical solids. Replaceable steel wear plate for maintaining maximum pump efficiency.
- **Mechanical Seal:** Standard carbon/ceramic faces, Viton® elastomers, 300 series stainless components.
- **Engine:** Industry recognized Briggs and Stratton Vanguard, Honda or Kohler.
- **Mounting:** Horizontal position.

Applications:

- Irrigation
- Construction
- Mining
- Commercial
- Municipal
- Light Industrial

Viton® is a registered trademarks of E. I. du Pont de Nemours and Company.

Specifications:

Capacities: to 400 gpm

Heads: to 165 feet

Working Pressure: 120 psi max

Temperature: 212 °F max

Rotation: clockwise viewed from engine side

Pipe Connections: NPT

Model (HP)	Discharge	Suction
13	3"	3"
18, 27	4"	4"

Gas Engine FMIG 13, 18, 27 hp

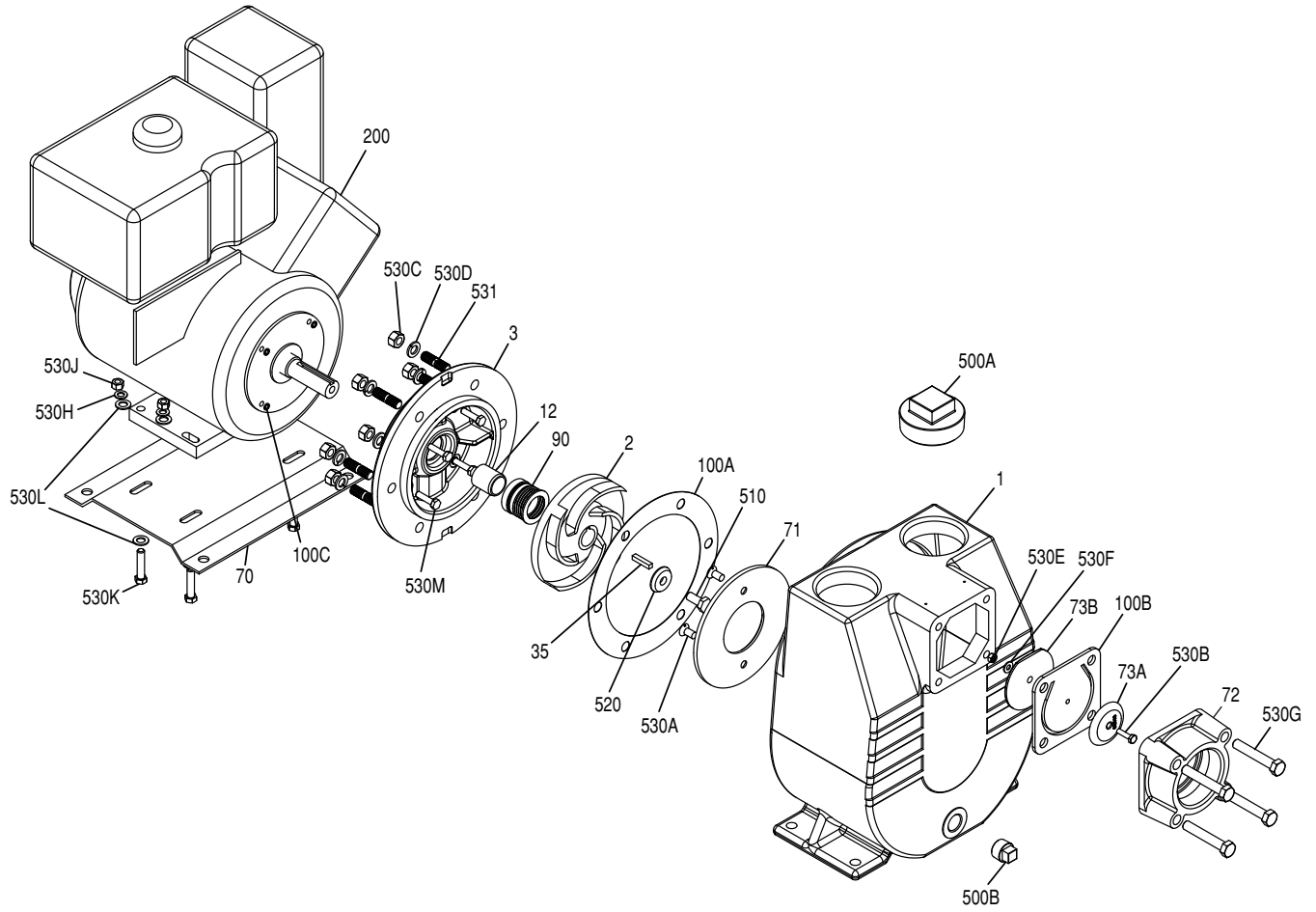
Ordering Information:

Gas Engine 13, 18, 27 HP						
Pump Size (Dis x Suc)	HP	Model Description	Engine Description	Order Number	Low Oil Shut-Off	Wt.
3 x 3	13	FMIG30-13H	Honda, with 6.9 qt. fuel tank	90281113	YES	270
4 x 4	18	FMIG40-18K	Kohler	90281218	YES	320
4 x 4	27	FMIG40-27K	Kohler	90281227	YES	320

Note: All weight in pounds. Equipped with electric start. Battery and cables not included. Fuel tank not included on 18 and 27 hp models.

Gas Engine FMIG 13, 18, 27 hp

Exploded Parts Drawing:



Gas Engine FMIG 13, 18, 27 hp

Materials and Parts:

Fig No.	Part Description	Part No.		Materials of Construction
		FMIG30-13H	FMIG40-18K	
1	Pump Case	305455002	305455003	Cast Iron, ASTM-A48 CL30
2	Impeller	See Table 1		Cast Iron, ASTM-A48 CL30
3	Motor Adapter	305456001	305456002	Cast Iron, ASTM-A48 CL30
12	Mechanical seal Shaft Sleeve	305456003	305456004	416 Stainless steel
35	Impeller Shaft Key	305456005	305456006	316 Stainless steel
70	Base, Engine Frame	305456007	305455018	CRS
71	Wear Plate	305455008	305455009	CRS
72	Check Valve	305454019	305454020	CRS
73A	Top Weight- Check Valve	305454022	305454023	Cast Iron, ASTM-A48 CL30
73B	Bottom Weight - Check Valve	305454025	305454025	Cast Iron, ASTM-A48 CL30
90	Mechanical Shaft Seal	305463043	305463044	Carbon/CeramicViton®/316SS
100A	Case Gasket	305454041	305454042	NA60
100B	Flapper Valve	305454044	305454045	Neoprene
100C	O-Ring - Motor Bracket (4-Pack)	305463087		Viton®
200	Engine	See Below		Misc.
500A	Pipe Plug 3" (3-Pack)	305463076		Cad-Plated Steel
500B	Pipe Plug 3/4" (3-Pack)	305463050		Cad-Plated Steel
503	Water Slinger	305456009	305456010	Neoprene
510	Impeller Hex Cap Screw	305463210		18-8 Stainless
510	Impeller Hex Cap Screw (Honda 13hp)	305463088		18-8 Stainless
520	Impeller Washer	305456011		300-Series stainless Steel
531	Threaded Stud (6-Pack)	305463089		Zinc Plated Steel
530A	Screw, Flat Head Slotted (6-Pack))	305463079		Zinc Plated Steel
530B	Bolt, Flapper	305463080		300-Series stainless Steel
530C	Hex Nuts - Adapter Case(6-Pack)	305463059		Zinc Plated Steel
530D	Lockwasher - Adapter Case (6-Pack)	305463060		Zinc Plated Steel
530E	Nut, Flapper	305463082		300-Series stainless Steel
530F	Washer, Flapper	305463084		300-Series stainless Steel
530G	Valve Hex Cap Screw (4-Pack)	305463085		Zinc Plated Steel
530H	Lockwasher - base (6-Pack)	305463032		Zinc Plated Steel
530J	Hex Nut - base (6-Pack)	305463033		Zinc Plated Steel
530K	Hex Bolt - base (4-Pack)	305463090		Zinc Plated Steel
530L	Washer - base (4-Pack)	305454046		Zinc Plated Steel
530M	Hex Bolt - Motor Bracket (4-Pack)	305463091	305463162	Zinc Plated Steel
530N	Lockwasher - Motor Bracket	n/a	305463212	Zinc Plated Steel
530P	Bolt - Base Case	n/a	305463163	Zinc Plated Steel
530R	Lockwasher - Base Case	n/a	305463060	Zinc Plated Steel
530S	Nut - Base Case	n/a	305463059	Zinc Plated Steel
Not Shown	Flinger (10-Pack)	305456016		Neoprene
Not Shown	Case Gasket (25-Pack)	305454041		NA60

Viton® is a registered trademarks of E. I. du Pont de Nemours and Company.

Table 1:

Impellers	Part No.	Materials of Construction
FMIG30-13H/V	305456013	Cast Iron, ASTM-A48 CL30
FMIG40-18K	305456014	Cast Iron, ASTM-A48 CL30
FMIG40-27K	305456015	Cast Iron, ASTM-A48 CL30

Model	Engine Description	Materials of Construction
FMIG30-13V	ENG B/S 245432-0235-B1 13HP	201966
FMIG30-13H	ENG HONDA GX390U1QAE2 13HP OHV	202258
FMIG40-18K	ENG KOHLER CH620-0017 18HP	202253
FMIG40-27K	ENG KOHLER CH740-0124 27 HP	202259

Gas Engine FMIG 13, 18, 27 hp

Performance Curve:

