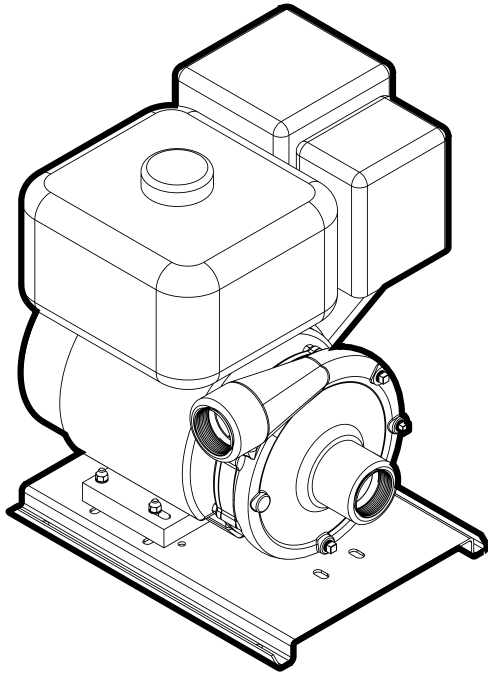


Gas Engine FACGF 5.5 - 18 hp

BOOK: GEC-005

DATE: October 1, 2010



Features:

- **Volute:** Cast iron rugged construction with tapped openings for venting and draining.
- **Impeller:** Enclosed cast iron for higher pressure applications.
- **Mechanical Seal:** Standard carbon/ceramic faces, Viton elastomers, 300 series stainless components.
- **Engine:** Industry recognized Briggs and Stratton, or Honda equipped with adjustable throttle controls.
- **Mounting:** Horizontal position.

Applications:

- Irrigation
- Construction
- Mining
- Commercial
- Municipal
- Light Industrial

Specifications:

Capacities: to 270 gpm

Heads: to 260 feet

Working Pressure: 150 psi max

Temperature: 200 °F max

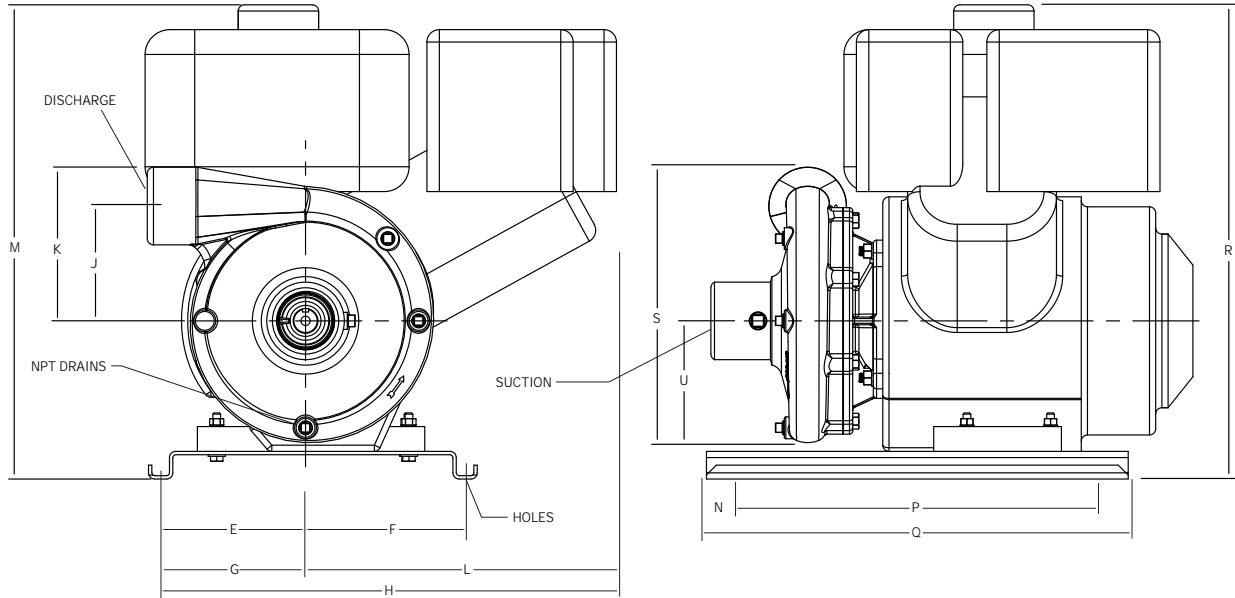
Rotation: clockwise viewed from engine side

Pipe Connections: NPT

Model (HP)	Discharge	Suction
5.5, 8, 9	2"	2"
18	2-1/2"	2-1/2"

Gas Engine FACGF 5.5 - 18 hp

Dimensional Drawings:



Dimensions:

Model	Discharge	Suction	Drain NPT	4 Holes Dia.	E	F	G	H	J	K	L	M	N	P	Q	R	S	U
FACGF-5	2	2	¼	0.41	3.68	4.82	4.28	16.50	4.10	5.70	11.40	15.90	0.28	10.80	16.40	16.30	11.00	4.92
FACGF-8	2	2	¼	0.41	5.75	6.13	6.50	19.50	3.32	5.50	10.90	17.50	0.63	13.50	19.60	16.80	17.60	6.38
FACGF-18	2½	2½	¼	0.44	-	-	10.50	18.25	4.78	6.59	7.75	28.00	6.88	24.00	46.00	-	16.00	9.38

Note: Dimensions are for estimating purposes only. Certified dimension drawings are available on request. All dimensions in inches.

Gas Engine FACGF 5.5 - 18 hp

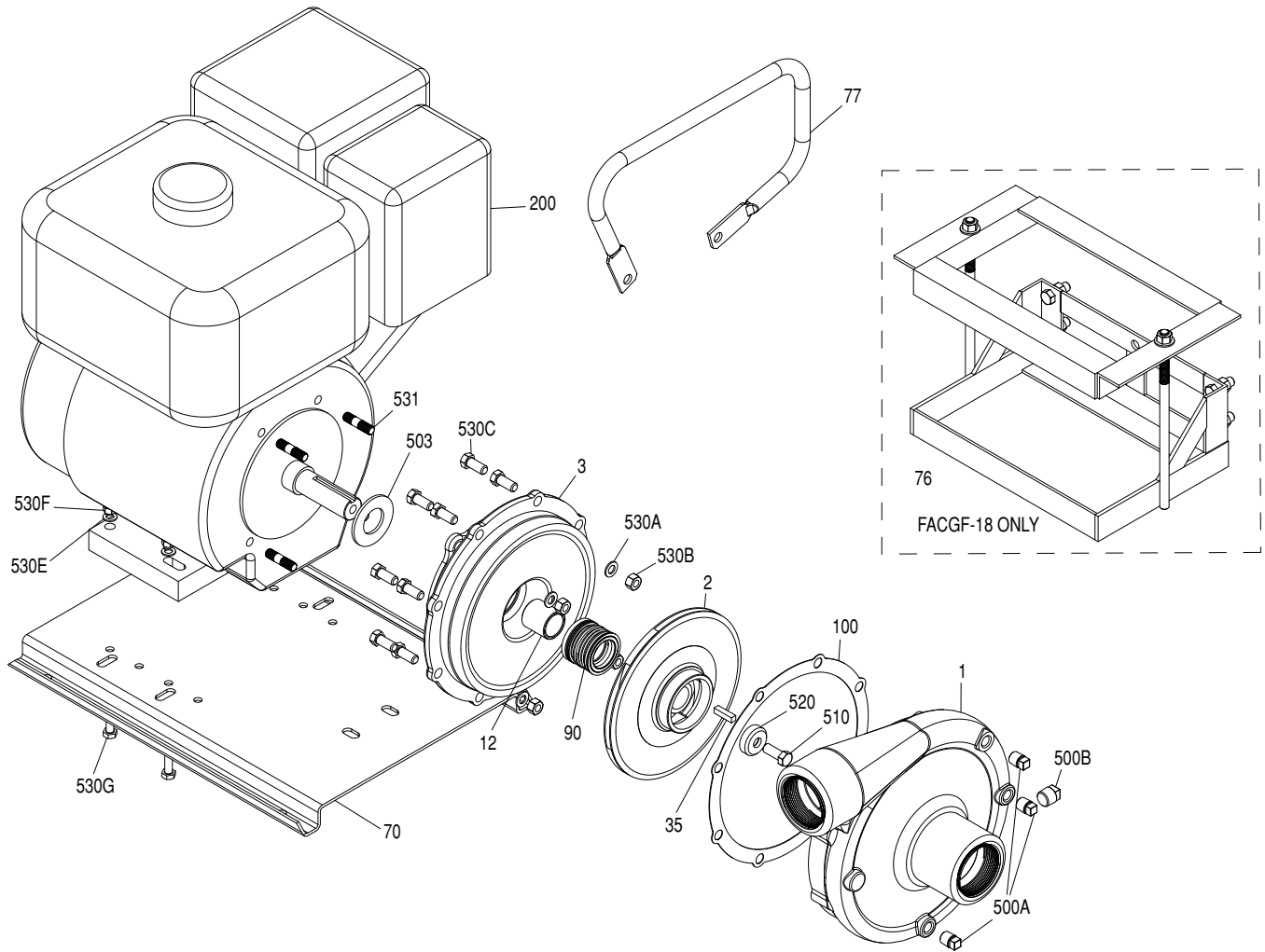
Ordering Information:

Gas Engine 5.5 - 18 HP						
Pump Size (Dis x Suc)	HP	Model Description	Engine Description	Order Number	Low Oil Shut-Off	Weight
2 x 2	5.5	FACGF-5	Briggs & Stratton INTEK, with 3 qt. fuel tank	90261005	NO	62
2 x 2	5.5	FACGF-5H	Honda, with 4 qt. fuel tank	90261105	YES	62
2 x 2	8	FACGF-8	Briggs & Stratton INTEK, with 4 qt. fuel tank	90261008	NO	82
2 x 2	9	FACGF-8H	Honda, with 6 qt. fuel tank	90261108	YES	82
2-1/2 x 2-1/2	18	FACGF-18H	Honda GX610, electric start	90261118	YES	278

Note: All weight in pounds.

Gas Engine FACGF 5.5 - 18 hp

Exploded Parts Drawing:



Gas Engine FACGF 5.5 - 18 hp

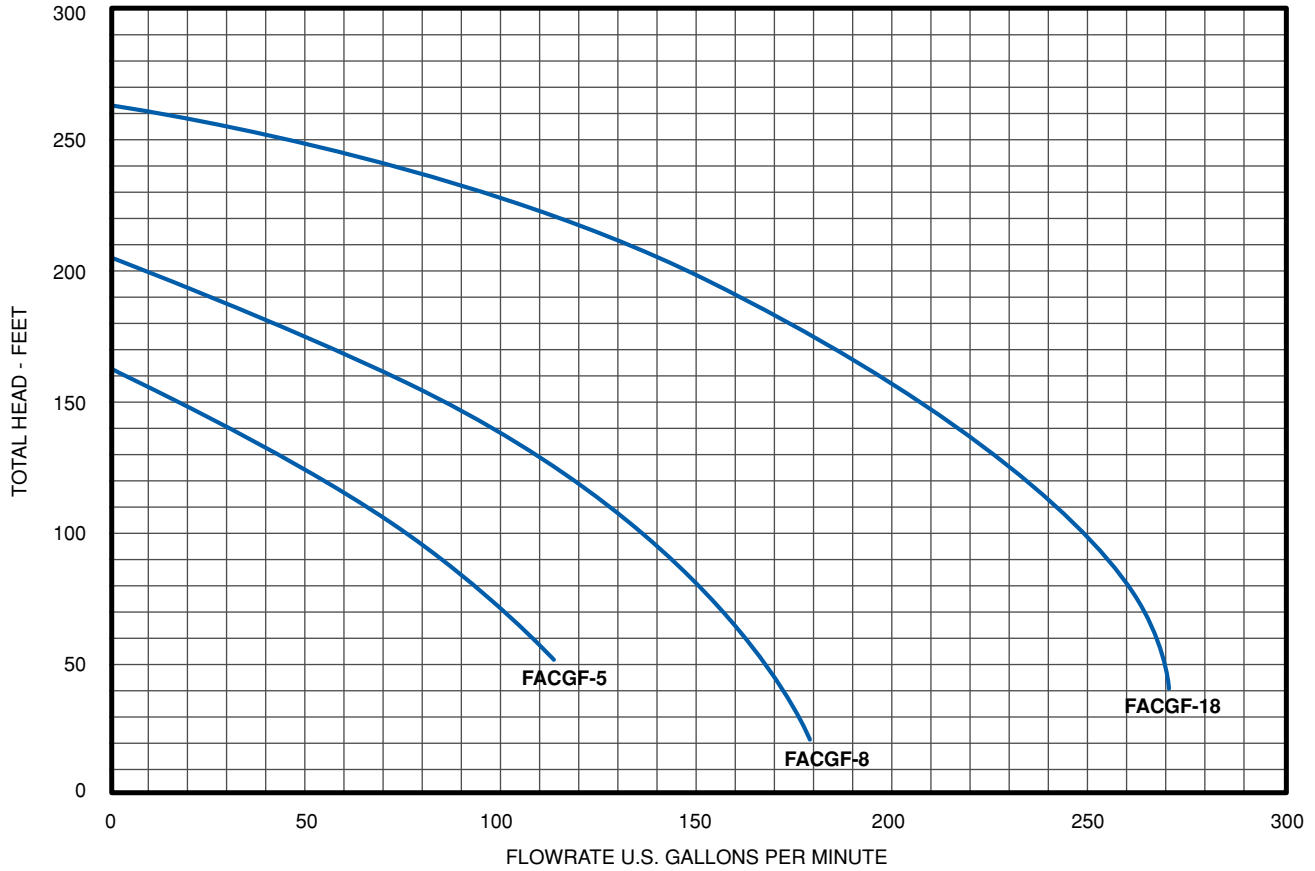
Materials and Parts:

Fig No.	Part Description	Part No.				Materials of Construction
		FACGF-5	FACGF-8	FACGF-8H	FACGF-18	
1	Pump Case	305459001			305459003	Cast Iron, ASTM-A48 CL30
2	Impeller	305459004	305459005	305459007		Cast Iron, ASTM-A48 CL30
3	Motor Adapter	305459008	305459009		305459010	Cast Iron, ASTM-A48 CL30
12	Mech. Seal Shaft Sleeve	305458010	305459011		305459013	416 Stainless Steel
35	Shaft Key	n/a			305456005	300 Stainless Steel
70	Base, Engine Frame	305459015	305459016	30549024		CRS
76	Battery Holder Assembly	n/a			305457008	CRS
77	Pump Handle	305459017	305459018	305459019	n/a	CRS
Not shown	Fuel Tank	n/a			305459020	Polypropylene
Not shown	High Mount Muffler Assembly	n/a			305459021	Misc.
90	Mechanical Shaft Seal	305463116	305463043			Carbon/Ceramic Viton/316SS
100	Case O-Ring / Gasket	305463117			305463118	EPDM
200	Engine	See Engines Below				Misc.
500A	Pipe Plug 1/4" (3 Req.)	305463020				Cad-Plated Steel
500B	Pipe Plug NPT	305463009			305463118	Cad-Plated Steel
503	Water Slinger	305458022	305456009		305459022	Neoprene
510	Impeller Bolt	n/a			305463119	300 Series Stainless
520	Impeller Washer	n/a			305455014	300 Stainless Steel
531	Threaded Stud / Volute Bolts	305463114			305463010	Zinc Plated Steel
530A	Lockwasher - Volute (4 Req.)	305463032				Zinc Plated Steel
530B	Hex Nut - Volute (4 Req.)	305463033				Zinc Plated Steel
530C	Hex Bolt/Stud - Motor Adapter (4 Req.)	305463120	305463121			Zinc Plated Steel
530D	Collar Seal/Washer - Motor Adapter	305463107	305463109		305463091	Nylon/Zinc
530E	Lockwasher - Base	305463092				Zinc Plated Steel
530F	Hex Nut - Base	305463062				Zinc Plated Steel
530G	Hex Bolt - Base	305463122	305463123		305463090	Zinc Plated Steel

Model	Engine Description	Part No.
FACGF-5	ENG B/S 120232-0136-B8 206CC	201915
FACGF-5H	ENG HONDA GX160UT1TX2 5.5HPOHV	202001
FACGF-8	ENG B/S 201332-0158-B1 305CC	201918
FACGF-8H	ENG HONDA GX270UTPA2 9HP OHV	202002
FACGF-18H	ENG HONDA GX610U1QZE2 18HP OHV	202257

Gas Engine FACGF 5.5 - 18 hp

Performance Curve:



Model	Performance Chart									
	Discharge Pressure in PSI at 5 Ft. Lift									
	10	20	30	40	50	60	70	80	90	100
Capacities in U.S. GPM										
FACGF-5/5H	-	115	98	75	52	24	-	-	-	-
FACGF-8/8H	-	165	155	140	122	95	60	24	-	-
FACGF-18/18H	270	265	260	250	235	210	190	160	125	87



Franklin Electric

400 East Spring Street, Bluffton, Indiana 46714
Tel: 260.824.2900 Fax: 260.824.2909
www.franklin-electric.com