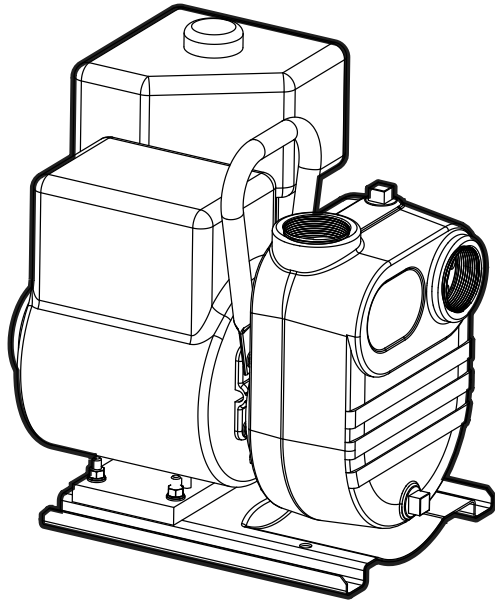


Gas Engine FBSGF 3.5 - 8 hp class

BOOK: GES-005
DATE: October 1, 2010



Features:

- **Volute:** Cast iron rugged construction with tapped openings for priming, venting and draining.
- **Impeller:** Semi-open cast iron with "Blind Hole" for engine shaft protection.
- **Mechanical Seal:** Standard carbon/ceramic faces, Viton elastomers, 300 series stainless components.
- **Engine:** Industry recognized Briggs and Stratton, or Honda equipped with adjustable throttle controls.
- **Mounting:** Horizontal position.

Applications:

- Irrigation
- Construction
- Mining
- Commercial
- Municipal
- Light Industrial

Specifications:

Capacities: to 356 gpm

Heads: to 208 feet

Working Pressure: 120 psi max

Temperature: 200 °F max

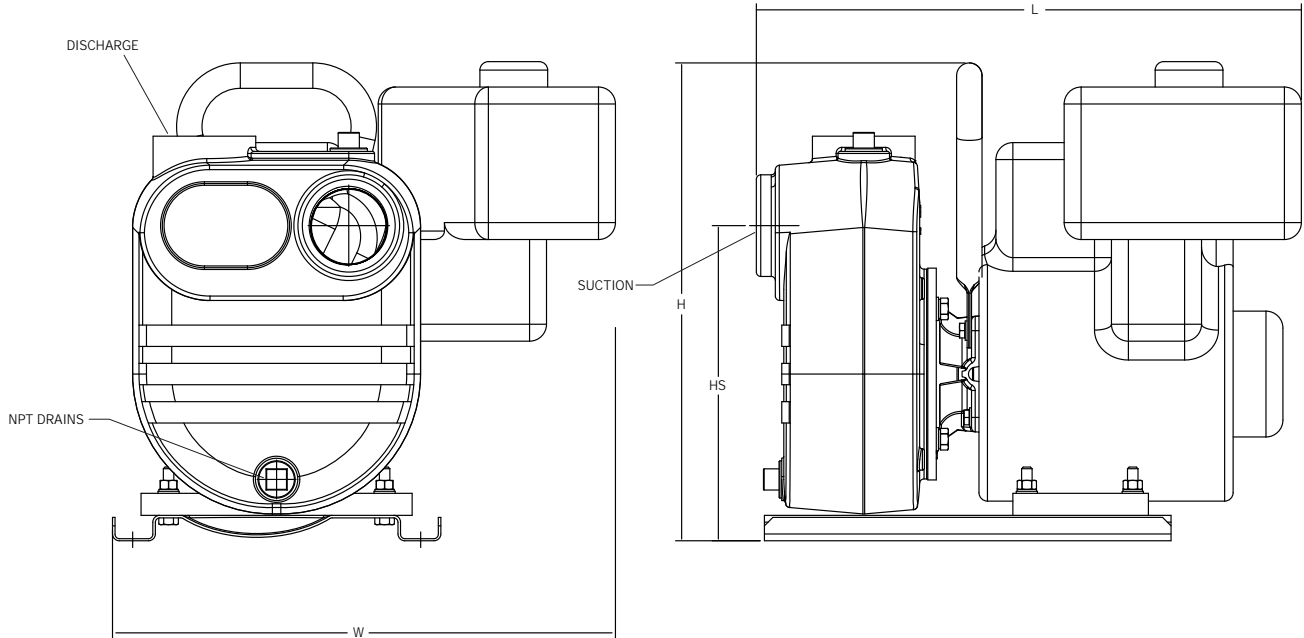
Rotation: clockwise viewed from engine side

Pipe Connections: NPT

Model (HP)	Discharge	Suction
3.5, 4, 5.5	2"	2"
8, 9	3"	3"

Gas Engine FBSGF 3.5 - 8 hp class

Dimensional Drawings:



Dimensions:

Model	Suction	Discharge	L	W	H	HS
FBSGF-8	2	2	15.25	13.25	14.00	9.25
FBSGF-10	2	2	16.69	15.75	16.00	9.25
FBSGF-12	3	3	21.00	18.75	16.50	12.00

Note: Dimensions are for estimating purposes only. Certified dimension drawings are available on request. All dimensions in inches.

Gas Engine FBSGF 3.5 - 8 hp class

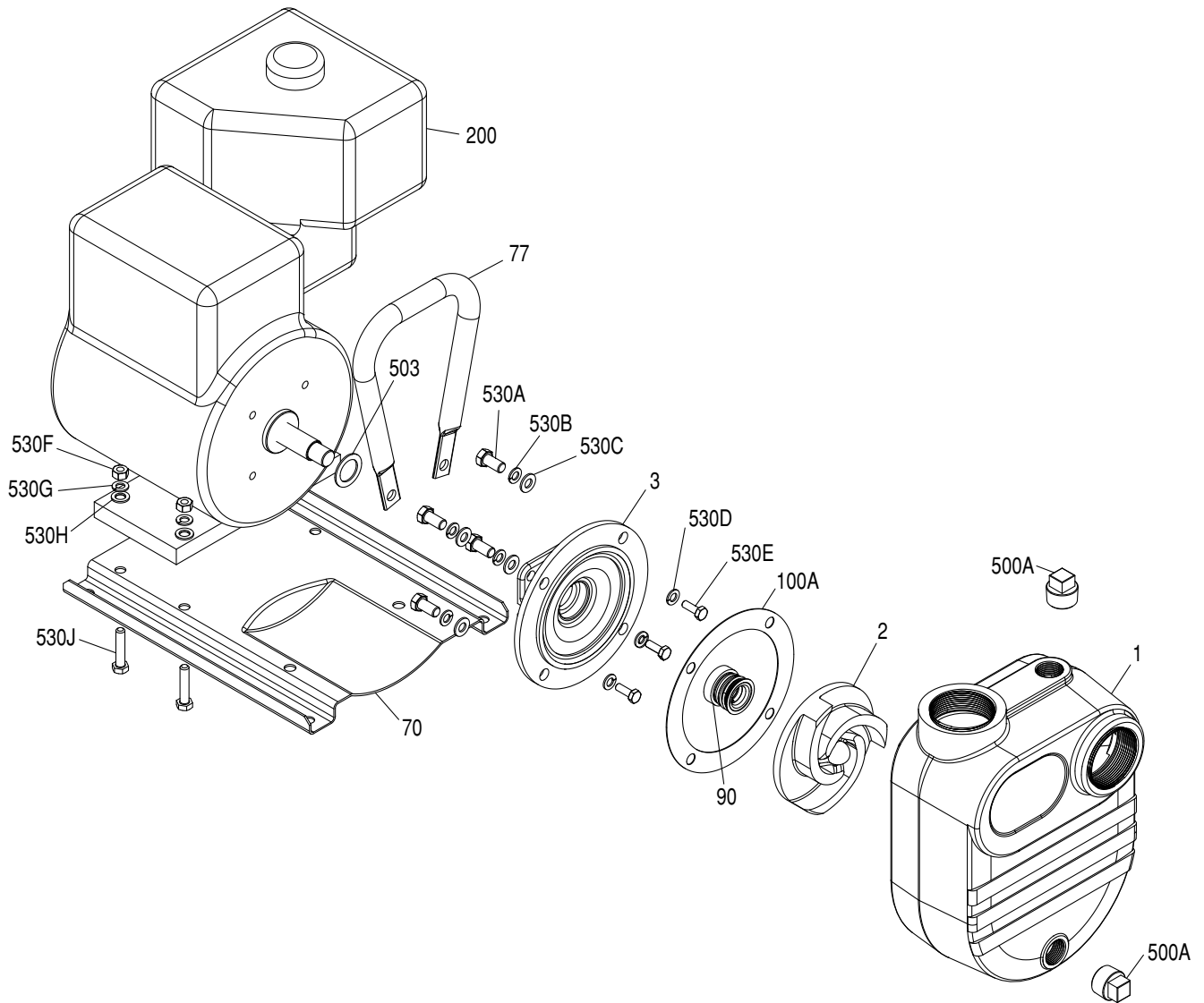
Ordering Information:

Gas Engine 3.5 - 8 HP Class						
Pump Size (Dis x Suc)	HP	Model Description	Engine Description	Order Number	Low Oil Shut-Off	Weight
2 x 2	3.5	FBSGF-8	Briggs & Stratton, with 3 qt. fuel tank	90271008	NO	65
	4	FBSGF-8H	Honda, with 3 qt. fuel tank	90271108	YES	65
	5.5	FBSGF-10	Briggs & Stratton INTEK, with 3 qt. fuel tank	90271010	YES	74
	5.5	FBSGF-10H	Honda, with 4 qt. fuel tank	90271110	NO	74
3 x 3	8	FBSGF-12	Briggs & Stratton INTEK, with 4 qt. fuel tank	90271012	YES	110
	9	FBSGF-12H	Honda, with 6 qt. fuel tank	90271112	YES	110

Note: All weight in pounds.

Gas Engine FBSGF 3.5 - 8 hp class

Exploded Parts Drawing:



Gas Engine FBSGF 3.5 - 8 hp class

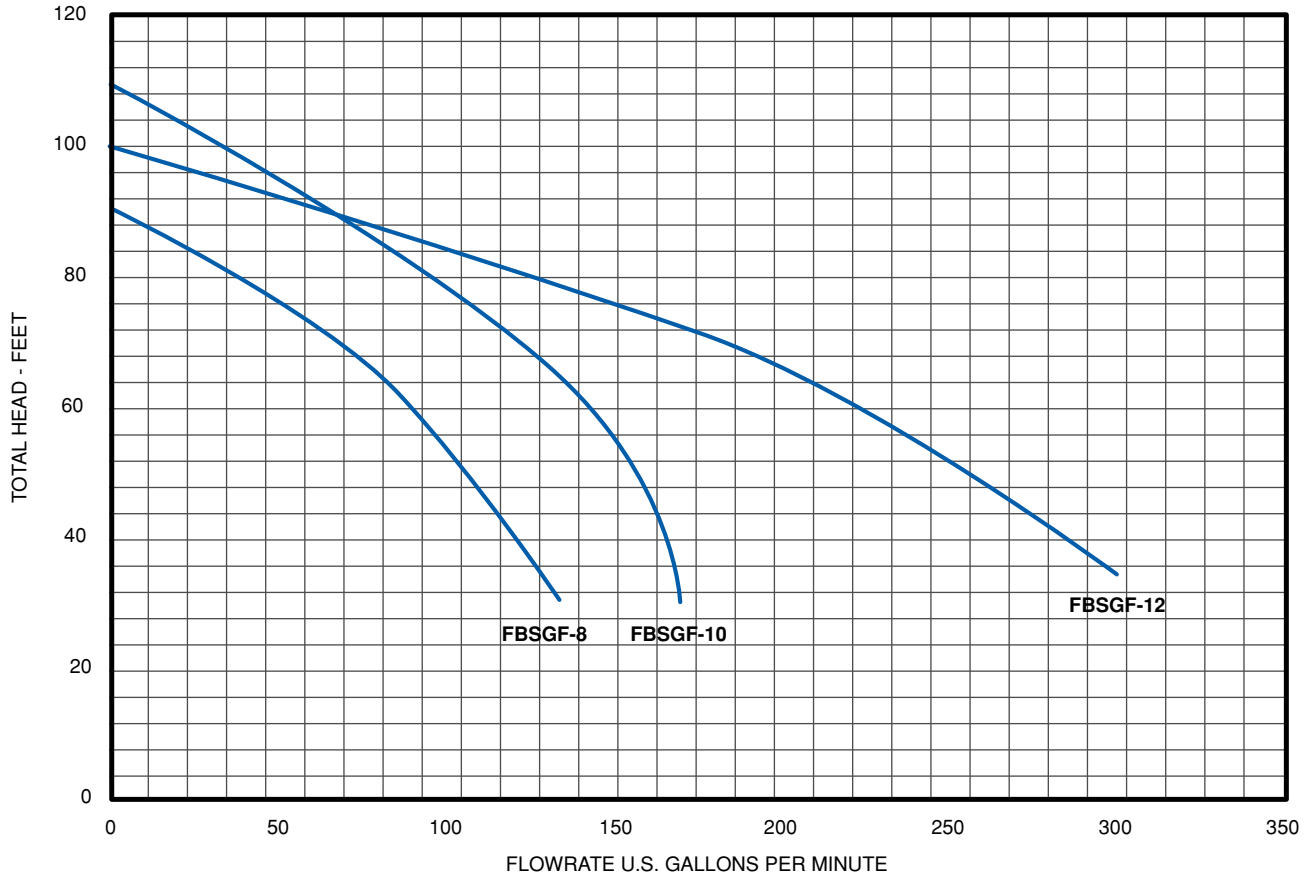
Materials and Parts:

Fig No.	Part Description	Part No.						Materials of Construction
		FBSGF-8	FBSGF-8H	FBSGF-10	FBSGF-10H	FBSGF-12	FBSGF-12H	
1	Pump Case	305460001			305460002		Cast Iron, ASTM-A48 CL30	
2	Impeller	305460003		305460004		305460005	Cast Iron, ASTM-A48 CL30	
3	Motor Adapter	305460003	305460004	305460003	305460004	305460005	Cast Iron, ASTM-A48 CL30	
12	Mech. Seal Shaft Sleeve	305458010				305458011		416 Stainless Steel
70	Base, Engine Frame	305459015			305459016			CRS
77	Pump Handle	305460006		305460007	305460006	305460008	305460009	CRS
90	Mechanical Shaft Seal	305463116				305463043		Carbon/Ceramic Viton/316SS
100	Case O-Ring / Gasket	305463124	305463125	305463124	305463125	305463126		EPDM
200	Engine	201950	202000	201915	202001	201918	202002	Misc.
500A	Pipe Plug	305463050						Cad-Plated Steel
503	Water Slinger	305460010		305458022		305456009		Neoprene
530A	Hex Bolt - Volute (4 Req.)	305463077				305463053		Zinc Plated Steel
530D	Bracket Lockwasher	305463127						Zinc Plated Steel
530E	Hex Bolt/Stud Motor Adapter (4 Req.)	305463128				305463129		Zinc Plated Steel
530F	Hex Nut - Base	305463062						Zinc Plated Steel
530G	Washer - Base	305463109						Zinc Plated Steel
530H	Lockwasher - Base	305463092						Zinc Plated Steel
530J	Hex Bolt - Base	305463122			305463123			Zinc Plated Steel

Model	Engine Description	Part No.
FBSGF-8	ENG B/S 093332-0191-B1 3.5HP	201950
FBSGF-8H	ENG HONDA GX120UT1TX2 4HP OHV	202000
FBSGF-10	ENG B/S 120232-0136-B8 206CC	201915
FBSGF-10H	ENG HONDA GX160UT1TX2 5.5HPOHV	202001
FBSGF-12	ENG B/S 201332-0158-B1 305CC	201918
FBSGF-12H	ENG HONDA GX270UTPA2 9HP OHV	202002

Gas Engine FBSGF 3.5 - 8 hp class

Performance Curve:



Model	Performance Chart							
	Total Head in Feet							
	30	40	50	60	70	80	90	100
	Capacities in U.S. GPM							
FBSGF-8	135	120	105	85	65	37	-	-
FBSGF-10	170	165	155	140	118	95	65	30
FBSGF-12	310	285	255	220	175	120	60	-



Franklin Electric

400 East Spring Street, Bluffton, Indiana 46714
Tel: 260.824.2900 Fax: 260.824.2909
www.franklin-electric.com