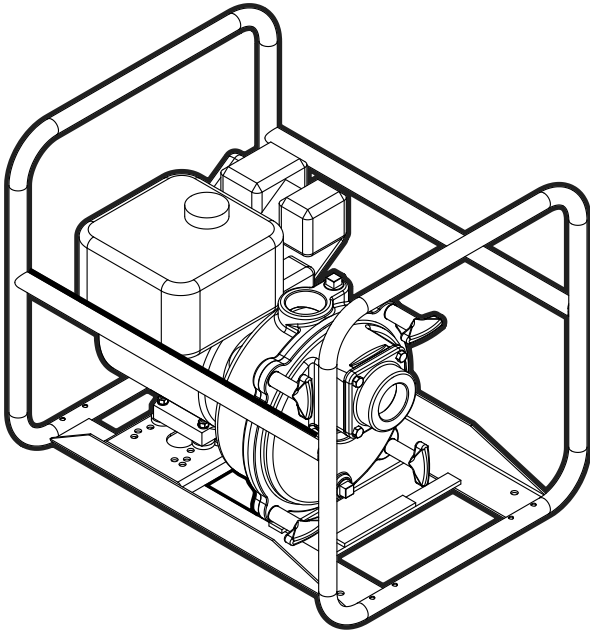


## Gas Engine FTSP 5.5, 9, 18 hp

**BOOK:** GES-015

**DATE:** October 1, 2010



### Features:

- **Volute:** Ductile iron rugged construction. Self-priming with priming and drain plugs. Removable front cover features a built in check valve to facilitate priming.
- **Impeller:** Cast iron semi-open, two vane type, capable of handling spherical solids.
- **Mechanical Seal:** Standard carbon/ceramic faces, Viton elastomers, 300 series stainless components.
- **Engine:** Industry recognized Briggs and Stratton Vanguard, or Honda equipped with adjustable throttle controls.
- **Mounting:** Horizontal position.

### Applications:

- Irrigation
- Construction
- Mining
- Commercial
- Municipal
- Light Industrial

### Specifications:

**Capacities:** to 615 gpm

**Heads:** to 100 feet

**Working Pressure:** 150 psi max

**Temperature:** 212 °F max

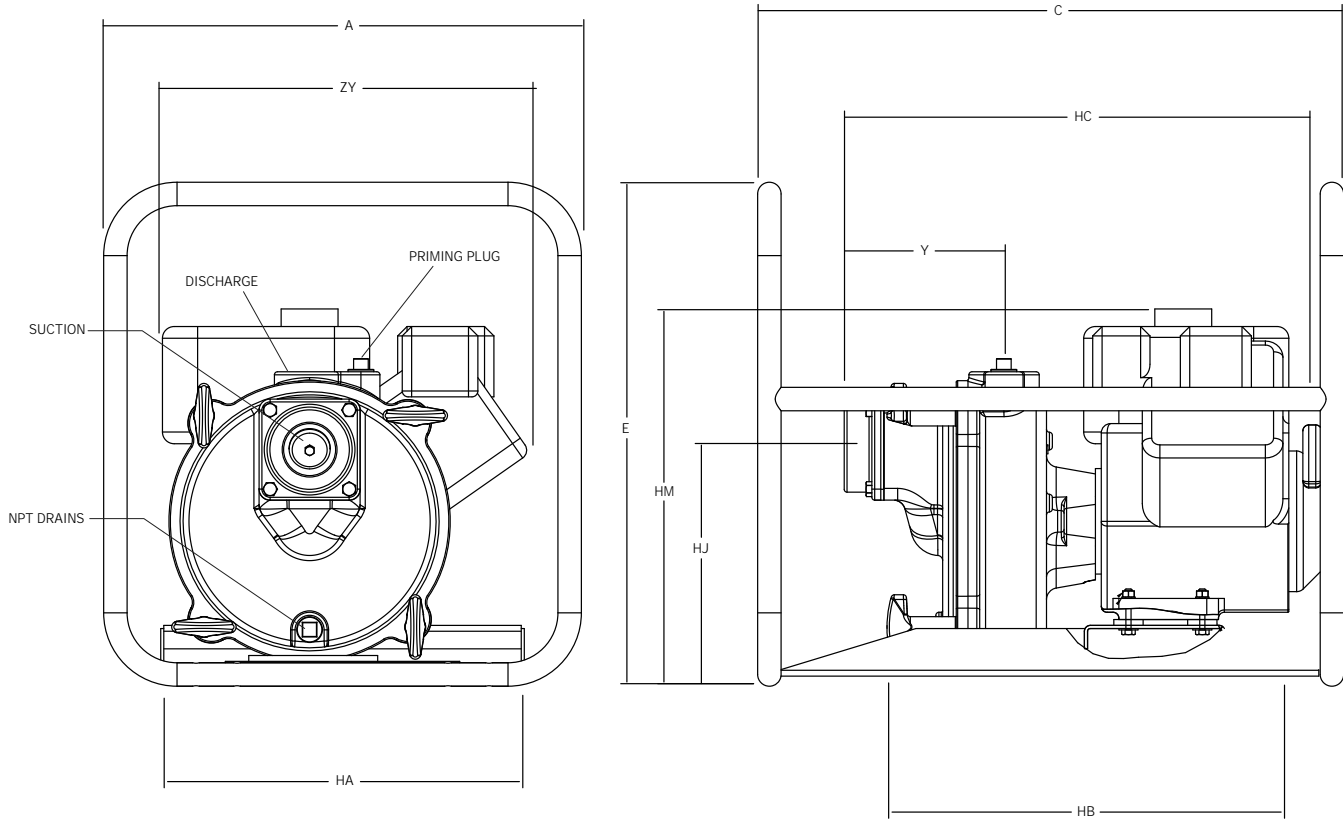
**Rotation:** clockwise viewed from engine side

**Pipe Connections:** NPT

Model (HP)	Discharge	Suction
5.5	2"	2"
9	3"	3"
18	4"	4"

## Gas Engine FTSP 5.5, 9, 18 hp

### Dimensional Drawings:



### Dimensions:

Model	HA	HB	HC	HJ	HM	ZY	Y	A	C	E
FTSP-5.5	-	-	-	11.50	-	-	-	20.40	25.00	21.50
FTSP-9	-	-	-	11.50	-	-	-	20.40	25.00	21.50
FTSP-18	16.18	25.00	32.00	17.81	24.00	20.09	12.00	-	-	-

**Note:** Dimensions are for estimating purposes only. Certified dimension drawings are available on request. All dimensions in inches.

## Gas Engine FTSP 5.5, 9, 18 hp

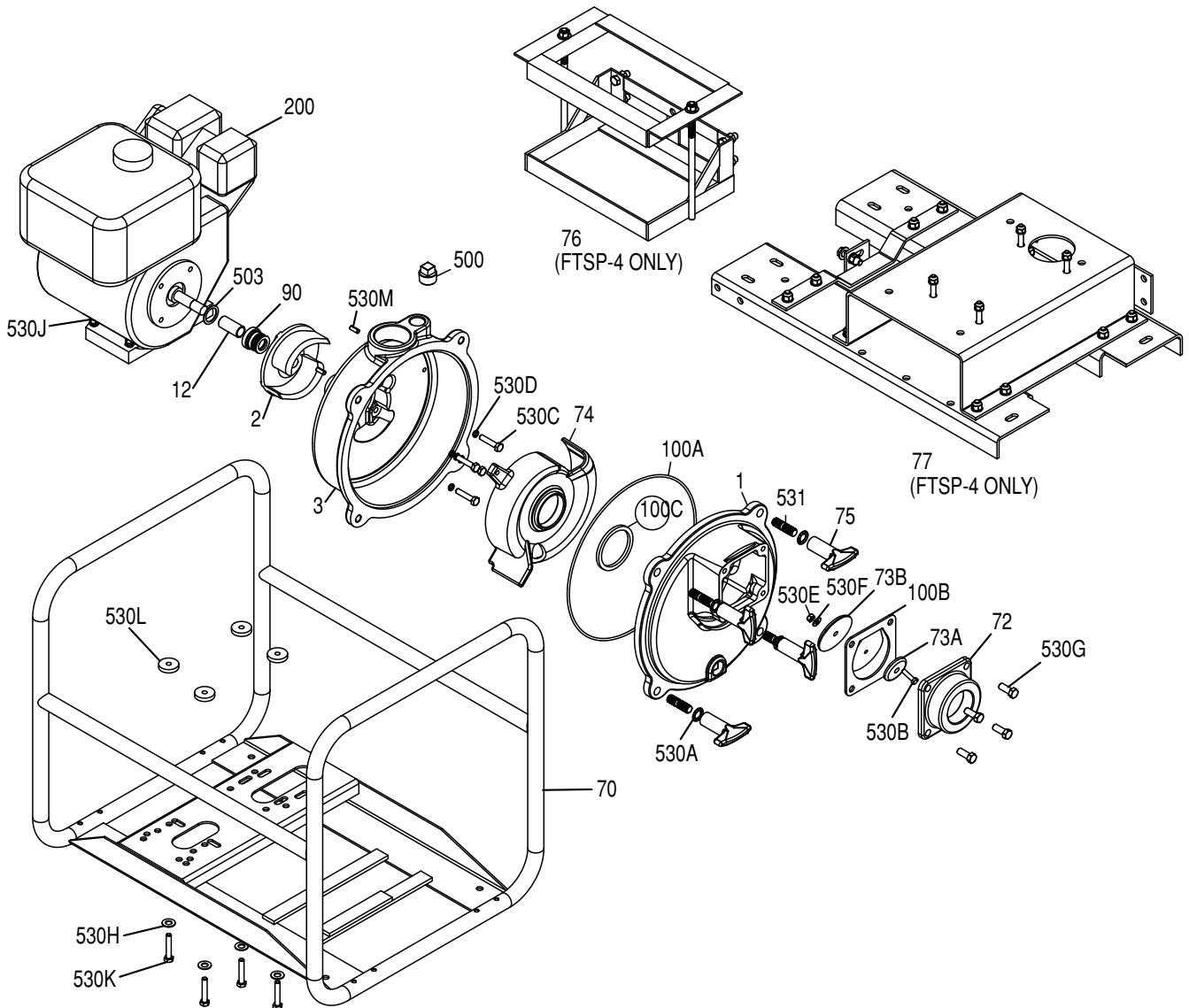
### Ordering Information:

Gas Engine 5.5, 9, 18 HP						
Pump Size (Dis x Suc)	HP	Model Description	Engine Description	Order Number	Low Oil Shut-Off	Wt.
2 x 2	5.5	FTSP-2HRF	Honda, with 0.8 gal. fuel tank	90281005	YES	107
3 x 3	9	FTSP-3HRF	Honda, with 1.3 gal. fuel tank	90281009	YES	151
4 x 4	18	FTSP-4V	Briggs & Stratton Vanguard, with 2.2 gal. fuel tank	90281018	NO	355

**Note:** All weight in pounds. Equipped with electric start. Battery and cables not included.

## Gas Engine FTSP 5.5, 9, 18 hp

### Exploded Parts Drawing:



## Gas Engine FTSP 5.5, 9, 18 hp

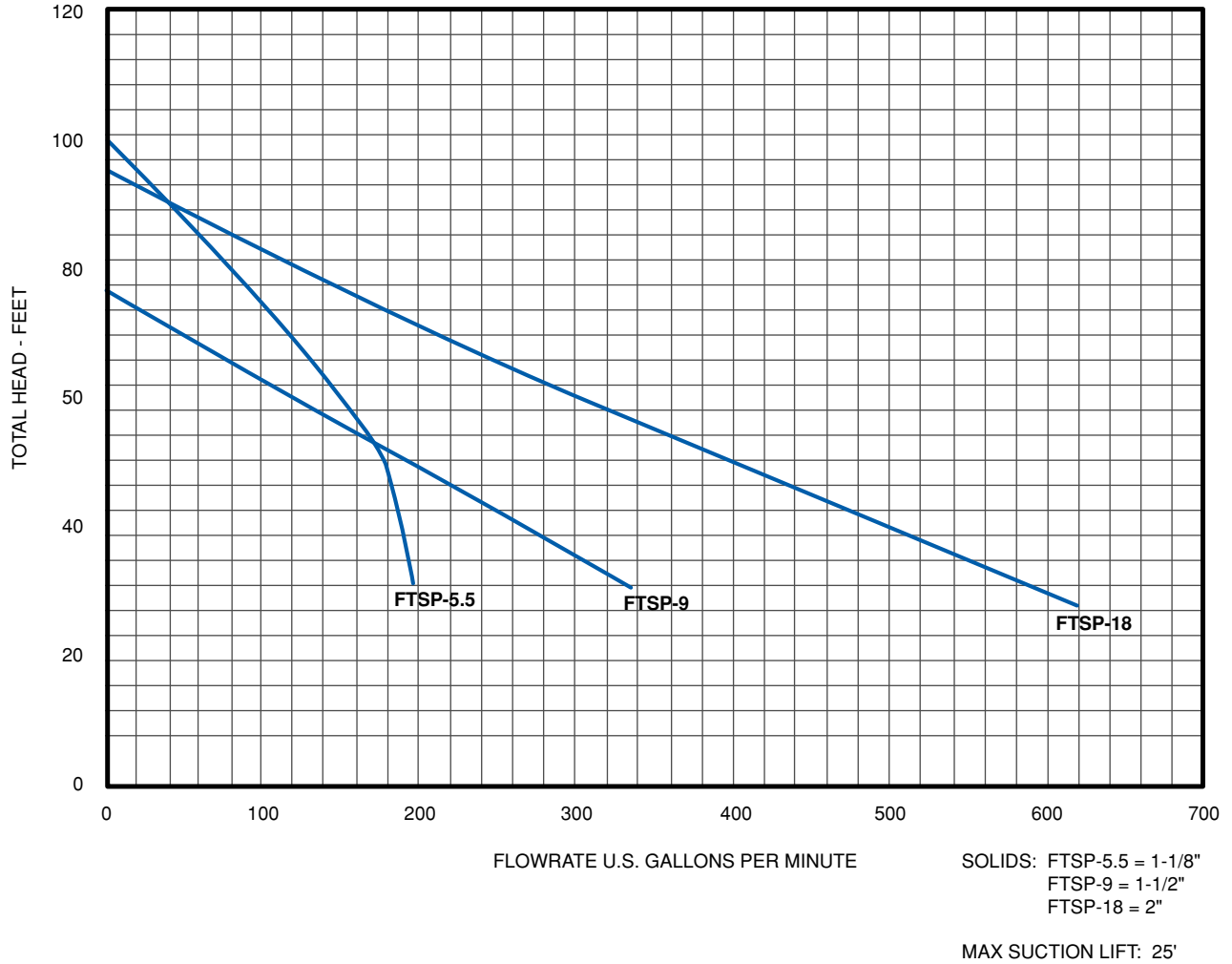
### Materials and Parts:

Fig No.	Part Description	Part No.			Materials of Construction
		FTSP-2	FTSP-3	FTSP-4	
1	Pump Case	305458001	305458002	305458003	Cast Iron, ASTM-A48 CL30
2	Impeller	305458004	305458005	305458006	Cast Iron, ASTM-A48 CL30
3	Motor Adapter	305458007	305458008	305458009	Cast Iron, ASTM-A48 CL30
12	Mech. Seal Shaft Sleeve	305458010	305458011	305458012	416 Stainless Steel
70	Base, Engine Frame	305458013		n/a	CRS
72	Check Valve	305455010	305458015	305454020	Cast Iron, ASTM-A48 CL30
73A	Top Weight - Check Valve	305455011	305458016	305454023	Cast Iron, ASTM-A48 CL30
73B	Bottom Weight - Check Valve	305455012	305454025	305454025	Cast Iron, ASTM-A48 CL30
74	Volute	305458017	305458018	305458019	Cast Iron, ASTM-A48 CL30
75	T-Handle Fasteners	305458020			Cast Iron, ASTM-A48 CL30
76	Battery Holder Assembly	n/a		305457008	CRS
77	Pump Frame Assembly	n/a		30548014	CRS
90	Mechanical Shaft Seal	305463094	305463095	305463096	SiC/SiCxBUNA-SS
100A	Case O-Ring	305463097	305463098	305463099	Nitrile
100B	Flapper Valve	305454043	305458021	305454045	Neoprene
100C	Square-Ring - Volute	305463100	305463101	305463102	Nitrile
100D	Motor Flange Gasket	n/a	n/a	305463103	NA60
200	Engine	202001	202002	201941	Misc.
500	Pipe Plug 3/4" (2 Req.)	305463050			Cad-Plated Steel
503	Water Slinger	305458022	305456009	305457010	Neoprene
531	Threaded Stud	305463089			Zinc Plated Steel
530A	Lockwasher - T-Handle (4 Req.)	305463104			Zinc Plated Steel
530B	Flapper Bolt	305463056	305463105	305463058	Zinc Plated Steel
530C	Hex Bolt - Motor Adapter (4 Req.)	305463106	305463093	305463110	Zinc Plated Steel
530D	Collar Seal - Motor Adapter (4 Req.)	305463107	n/a	n/a	Nylon
530E	Nut, Flapper	305463061	305463062	305463062	Zinc Plated Steel
530F	Washer, Flapper	305463063	305463108	305463108	Zinc Plated Steel
530G	Valve Hex Cap Screw (4 Req.)	305463010	305463064	305463065	Zinc Plated Steel
530H	Washer - Base (4 Req.)	305463108	305463109	305463109	Zinc Plated Steel
530J	Hex Nut - Base (4 Req.)	305463062			Zinc Plated Steel
530K	Hex Bolt - Base (4 Req.)	305463090	305463111	305463090	Zinc Plated Steel
530L	Isolator Washer - Base (4 Req.)	305463112		n/a	Rubber
NA	Volute Fastener	305463113	305463114	305463115	303 Stainless Steel

Model	Engine Description	Materials of Construction
FTSP-2	ENG HONDA GX160UT1TX2 5.5HPOHV	202001
FTSP-3	ENG HONDA GX270UTPA2 9HP OHV	202002
FTSP-4	ENG B/S 356447-0191-B1 570CC	201941

## Gas Engine FTSP 5.5, 9, 18 hp

### Performance Curve:







**Franklin Electric**

400 East Spring Street, Bluffton, Indiana 46714  
Tel: 260.824.2900 Fax: 260.824.2909  
[www.franklin-electric.com](http://www.franklin-electric.com)