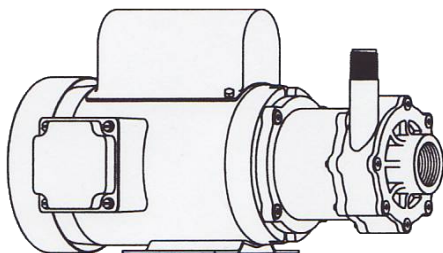




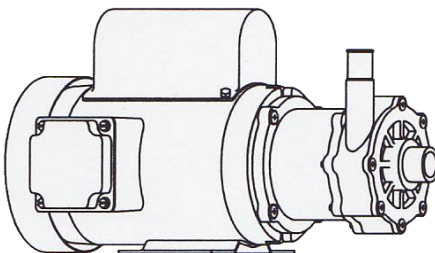
# MARCH PUMPS

1819 PICKWICK AVE., GLENVIEW, IL 60026-1306, U.S.A  
PHONE: (847) 729-5300 - FAX: (847) 729-7062  
WWW.MARCHPUMP.COM

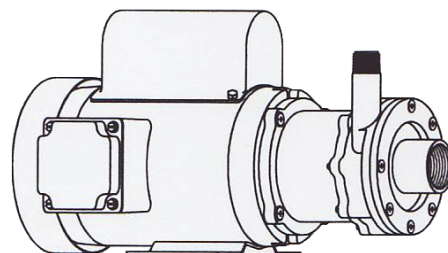
**TE-5C-MD**  
**TE-5A-MD**  
**TE-5K-MD**  
**TE-5S-MD**



TE-5C-MD/TE-5K-MD



TE-5A-MD



TE-5S-MD

## PUMP CONSTRUCTION & SERVICING:

March "Orbital" Magnetic Drive Pumps eliminate the conventional shaft seals found in most pumps. Hence, there is no rotating shaft or seal to wear and allow the liquid being pumped to leak out. The only seal in the pump is a stationary "O" ring seal between the Cover and the Rear Housing. The pump can be serviced with the use of a screwdriver. The only moving part other than the motor is the Impeller Assembly, which rotates on a stationary shaft and up against a thrust washer. These are the only parts that might wear, and may require replacement. See the Repair Parts list for replacement parts.

## OPERATION:

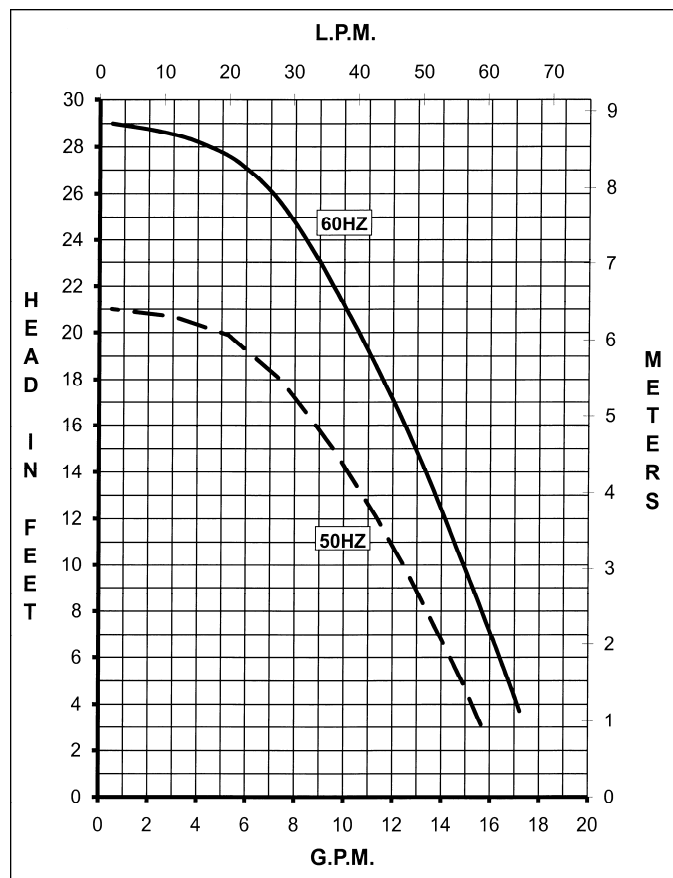
Pumps are not self priming and will not produce a suction lift and must be installed with a positive flooded suction. The pump should not run dry for long periods of time, as we rely on the liquid being pumped to lubricate the Impeller Assembly spinning on the stationary shaft. Teflon Filled and Carbon bushings are available upon special order. Contact the factory for special applications. A trimmed impeller may be necessary when pumping a liquid with a specific gravity or viscosity greater than water as well in cases of high liquid temperature.

## ELECTRICAL:

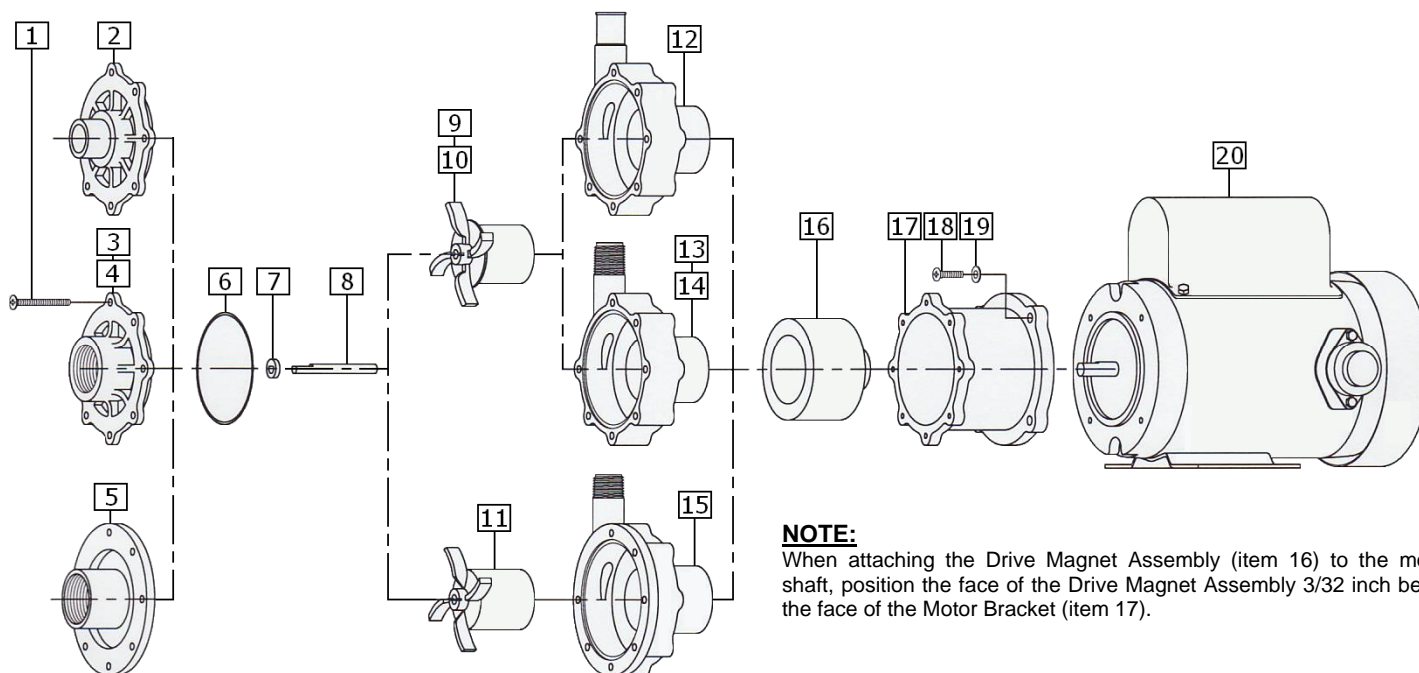
The standard pump has a 115/230 Volt, 50/60Hz, 1 Phase, A.C. Motor. The motor is totally enclosed with an external fan. A junction box is located on the side of the motor with instructions for the proper electrical hook-up. The motor is thermally overload protected and designed for continuous running.

## MODEL ABBREVIATIONS:

TE = Totally Enclosed Fan Cooled Motor, MD = Magnetic Drive  
5C/5K/5S = Threaded Inlet/Outlet, 5A = Smooth Inlet/Outlet  
S = Stainless, K = Kynar, C/A = Polypropylene.



SPECIFICATIONS			TE-5C-MD	TE-5A-MD	TE-5K-MD	TE-5S-MD
Max Flow	50Hz	lpm	60.5	60.5	60.5	60.5
	60Hz	gpm	18	18	18	18
Max Head	50Hz	m	6.3	6.3	6.3	6.3
	60Hz	ft (psi)	29 (12.5)	29 (12.5)	29 (12.5)	29 (12.5)
Inlet		1" FPT	1" OD	1" FPT	1" FPT	1" FPT
Outlet		1/2" MPT	3/4" OD	1/2" MPT	1/2" MPT	1/2" MPT
Max Internal Pressure	psi		50	50	75	200
	bar		3.4	3.4	5.0	13
Max Liquid Temperature	°F		190	190	200	250
	°C		87	87	93	121
Packed Weight		kg/lbs	7/15.5	7/15.5	7/15.5	8/18
Motor Type			TEFC 115/230	TEFC 115/230	TEFC 115/230	TEFC 115/230
Phase			1	1	1	1
50Hz	Volts	110 220	110 220	110 220	110 220	110 220
	Watts	177 177	177 177	177 177	177 177	177 177
	Amps	2.2 1.1	2.2 1.1	2.2 1.1	2.2 1.1	2.2 1.1
	Kw	0.149 0.149	0.149 0.149	0.149 0.149	0.149 0.149	0.149 0.149
	Rpm	2850 2850	2850 2850	2850 2850	2850 2850	2850 2850
60Hz	Volts	115 230	115 230	115 230	115 230	115 230
	Watts	255 255	255 255	255 255	255 255	255 255
	Amps	2.1 1.05	2.1 1.05	2.1 1.05	2.1 1.05	2.1 1.05
	Hp	0.2 0.2	0.2 0.2	0.2 0.2	0.2 0.2	0.2 0.2
	Rpm	3450 3450	3450 3450	3450 3450	3450 3450	3450 3450
Electrical Connection			Conduit Box	Conduit Box	Conduit Box	Conduit Box
Overall Pump Dimensions (Inches)	Height	7.19	7.19	7.19	7.19	7.19
	Width	8.02	8.02	8.02	8.02	8.02
	Length	13	13.56	13	13.31	13.31
Overall Pump Dimensions (cm)	Height	18.2	18.2	18.2	18.2	18.2
	Width	20.3	20.3	20.3	20.3	20.3
	Length	33.0	34.4	33.0	33.8	33.8



**NOTE:**

When attaching the Drive Magnet Assembly (item 16) to the motor shaft, position the face of the Drive Magnet Assembly 3/32 inch below the face of the Motor Bracket (item 17).

**REPAIR PARTS LIST**

ITEM	DESCRIPTION	MATERIAL	QTY	PART #	TE-5C-MD	TE-5A-MD	TE-5K-MD	TE-5S-MD
1	Screw #8-32 X 1-3/4" Lg.	Stainless Steel	7	0150-0021-1000	S	S	S	S
2	Cover (1"OD Inlet)	Polypropylene	1	0150-0150-1000	O	S		
3	Cover (1"FPT Inlet)	Polypropylene	1	0150-0032-1000	S	O		
4	Cover (1"FPT Inlet)	Kynar	1	0150-0124-1000			S	
5	Cover (1"FPT Inlet)	316 Stainless Steel	1	0150-0111-0000				S
6A	"O" Ring	Viton	1	0135-0023-1000	S	S	S	S
6B	"O" Ring	Viton/Teflon	1	0150-0171-1000	O	O	O	O
7	Thrust Washer	Ceramic	1	0130-0028-1000	S	S	S	S
8	Shaft	Ceramic	1	0130-0024-1000	S	S	S	S
9A	Impeller Assembly	Polypropylene	1	0150-0098-0200	S	S		
9B	Impeller Assembly w/Carbon Bushing	Polypropylene/Carbon	1	0150-0098-0300	O	O		
9C	Impeller Assembly w/ Mica Teflon Bushing	Polypropylene/Teflon	1	0150-0098-0500	O	O		
10A	Impeller Assembly	Kynar	1	0150-0125-0200			S	
10B	Impeller Assembly w/Carbon Bushing	Kynar/Carbon	1	0150-0125-0300			O	
10C	Impeller Assembly w/Mica Teflon Bushing	Kynar/Teflon	1	0150-0125-0500			O	
11A	Impeller Assembly w/Carbon Bushing	316 St'less/Carbon Bushing	1	0150-0114-0400				S
11B	Impeller Assembly w/Mica Teflon Bushing	316 St'less/Teflon Bushing	1	0150-114-0600				O
12	Rear Housing w/Thrust Washer (3/4" OD Outlet)	Polypropylene/Ceramic	1	0150-0159-0100	O	S		
13	Rear Housing w/Thrust Washer (1/2" MPT Outlet)	Polypropylene/Ceramic	1	0150-0031-0100	S	O		
14	Rear Housing w/Thrust Washer (1/2" MPT Outlet)	Kynar/Ceramic	1	0150-0123-0100			S	
15	Rear Housing (1/2" MPT Outlet)	316 Stainless Steel	1	0150-0110-0000				S
16	Drive Magnet Assembly		1	0150-0176-0300	S	S	S	S
17	Motor Connecting Bracket		1	0150-0070-0100	S	S	S	S
18	Screw #10-32 x 3/4" Lg.	Stainless Steel	4	0150-0050-1000	S	S	S	S
19	Washer	Stainless Steel	4	0150-0051-1000	S	S	S	S
20	Motor - TEFC -115/230 Volt - 50/60 Hz		1	0150-0090-1000	S	S	S	S

NOTE: Contact Factory for other materials and/or parts not listed.

Legend: S = Standard, O = Optional

**MATERIALS IN CONTACT WITH SOLUTION:**

For TE-5C-MD & TE-5A-MD: Polypropylene, Viton, Ceramic

For TE-5K-MD: Kynar/Carbon Filled, Viton, Ceramic

For TE-5S-MD: 316 Stainless Steel, Viton, Ceramic, Carbon

**NOTES:**

All specifications & data are based on pumping water and are intended for use as a guideline only. Ratings may vary depending on the current motor being used.

**LIMITED WARRANTY:**

March pumps are guaranteed only against defects in workmanship or materials for a period of one year from date of manufacture pumping water. On all other solutions, contact the factory for application assistance. March Pump Application Worksheet 0750-0130-1000 is available for additional warranty information.