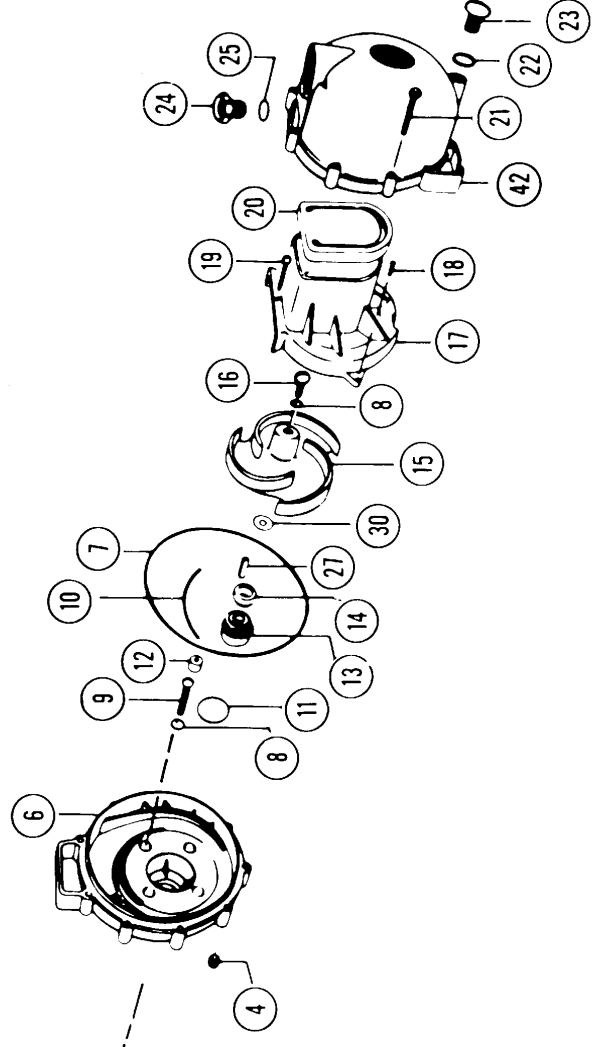
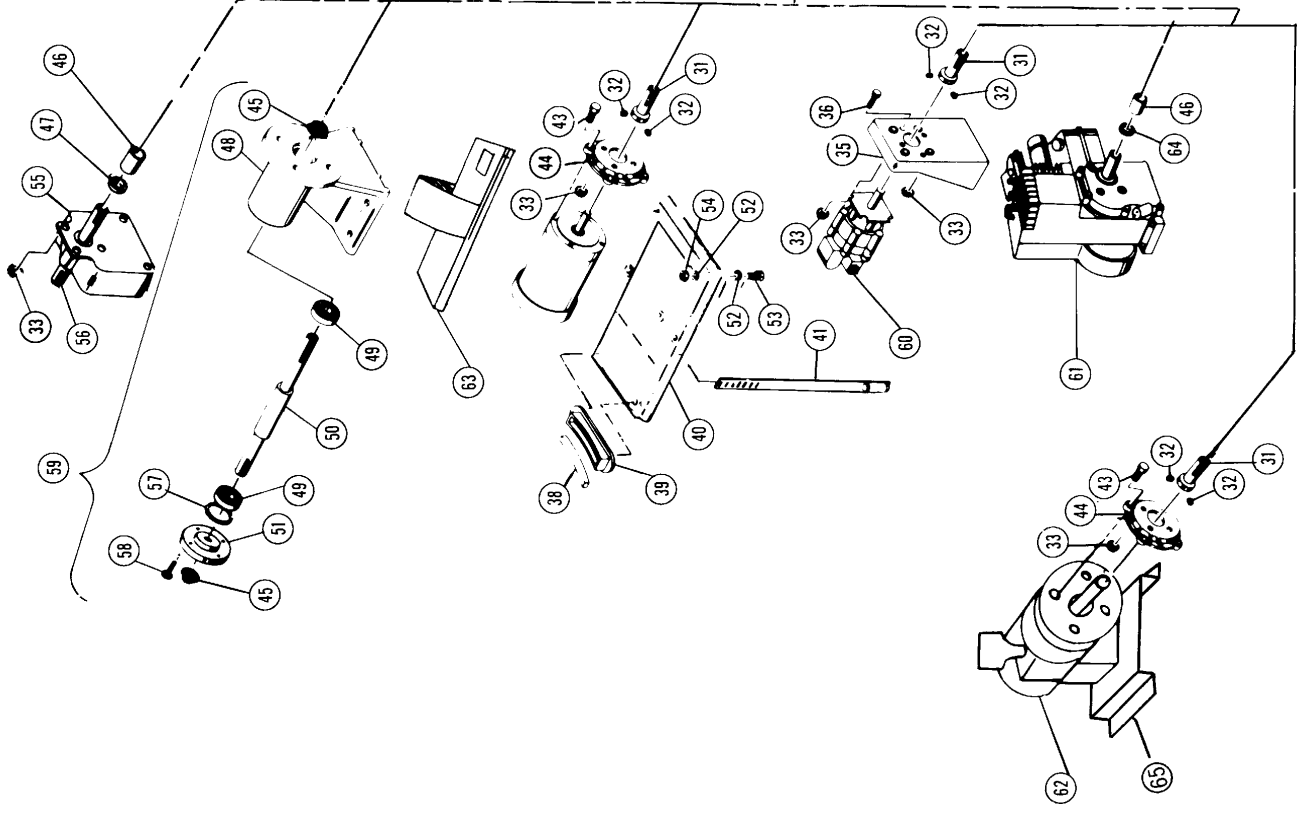


"S" Series PACER Pumps

Item#	Part No.	Description	Qty.
4	58-0721	NUT, BODY, Plated steel, 1/4" - 20 Hex	10
	58-0721	NUT, BODY, Stainless steel, 1/4" - 20 Hex	10
6	58-0703	Bracket, polyester	1
	58-0703	Bracket, polypropylene	1
	58-0703	Bracket, rylon	1
7	58-0719	O-Ring Body, Buna-N	1
	58-0719	O-Ring Body, EPDM	1
	58-0719	O-Ring Body, Viton	1
8	58-0717	O-Rings, Screw, Buna-N	1
	58-0717	O-Rings, Screw, EPDM	1
	58-0717	O-Rings, Screw, Viton	1
9	58-0715	Screws, Bracket, Stainless Steel for pumps close-coupled to engine and cast ped. mount, 5/16" - 24 x 1.25" long	4
	58-0715	Screws, Bracket, Hastelloy for pumps close-coupled to engine and cast ped. mount, 5/16" - 24 x 1.25" long	4
	58-0715	Screws, Bracket, Titanium for pumps close-coupled to engine and cast ped. mount, 5/16" - 24 x 1.25" long	4
	58-0728	Screws, Bracket, Stainless Steel for pumps pedestal mounted (plastic), close-coupled to electric, hydraulic or pneumatic motor, 5/16"-18 x 1.5"	4
	58-0728	Screws, Bracket, Hastelloy for pumps pedestal mounted (plastic), close-coupled to electric, hydraulic or pneumatic motor, 5/16"-18 x 1.5"	4
	58-0728	Screws, Bracket, Titanium for pumps pedestal mounted (plastic), close-coupled to electric, hydraulic or pneumatic motor, 5/16"-18 x 1.5"	4



"S" Series PACER Pumps

Item#	Part No.	Description	Grouping	Qty.	
10	58-0754 71	O-Ring Segment, Buna-N		1	
	58-0754 72	O-Ring Segment, EPDM		1	
	58-0754 73	O-Ring Segment, Viton		1	
10	58-0976 71	O-Ring Shaft Seal, Buna-N		1	
	58-0976 72	O-Ring Shaft Seal, EPDM		1	
	58-0976 73	O-Ring Shaft Seal, Viton		1	
12	58-0750 40	Plug, bracket screw protector (viton pumps only)		4	
	58-0750 90	Plug, bracket screw protector (ryton pumps only)		4	
13&14	58-0714 11	Seal, Shaft, Buna-N 316 Stainless Steel, carbon/ceramic		1	
	58-0714 12	Seal, Shaft, EPDM, 316 Stainless Steel, carbon/ceramic		1	
	58-0714 14	Seal, Shaft, CPI, Viton, 316 Stainless Steel, carbon/ceramic		1	
	58-0714 15	Seal, Shaft, CPI, Hastelloy C, Teflon, siliconized graphite		1	
	58-0714 92SG	Seal, Shaft, Non-Metallic, Halar, EPDM, siliconized graphite		1	
	58-0714 94SG	Seal, Shaft, Non-Metallic, Halar, Viton, siliconized graphite		1	
	58-0891 92SG	Seal, Shaft, Kynar, Polypro, Elgiloy, EPDM, siliconized graphite		1	
	58-0891 94SG	Seal, Shaft, Kynar, Polypro, Elgiloy, Viton, siliconized graphite		1	
	58-46250 11	Seal, Shaft, Buna-N, 316 Stainless Steel, Silicon Carbide		1	
	58-46250 12	Seal, Shaft, EPDM, 316 Stainless Steel, Silicon Carbide		1	
	58-46250 13	Seal, Shaft, CPI, Viton, 316 Stainless Steel, Silicon Carbide		1	
	15	58-0704 30	Impeller, 3 Vane, Open .535" Wide, 5.5" Dia., Polyester	A	1
58-0704 40		Impeller, 3 Vane, Open .535" Wide, 5.5" Dia., Polypropylene	A	1	
58-0704 60		Impeller, 3 Vane, Open .535" Wide, 5.5" Dia., Ryton	A	1	
58-0706 30		Impeller, 5 Vane, .535" Wide, 5.5" Dia., Polyester	A	1	
58-0706 40		Impeller, 5 Vane, .535" Wide, 5.5" Dia., Polypropylene	A	1	
58-0706 60		Impeller, 5 Vane, .535" Wide, 5.5" Dia., Ryton	A	1	
58-0974 30		Impeller, 4 Vane, .600" Wide, 4.75" Dia., Polyester	B	1	
58-0974 40		Impeller, 4 Vane, .600" Wide, 4.75" Dia., Polypropylene	B	1	
58-0974 60		Impeller, 4 Vane, .600" Wide, 4.75" Dia., Ryton	B	1	
58-0975 30		Impeller, 4 Vane, .975" Wide, 4.75" Dia., Polyester	C	1	
58-0975 40		Impeller, 4 Vane, .975" Wide, 4.75" Dia., Polypropylene	C	1	
58-0975 60		Impeller, 4 Vane, .975" Wide, 4.75" Dia., Ryton	C	1	
58-0667 30		Impeller, 3 Vane, .535" Wide, 4.75" Dia., Polyester	B	1	
58-0667 40		Impeller, 3 Vane, .535" Wide, 4.75" Dia., Polypropylene	B	1	
58-0667 60		Impeller, 3 Vane, .535" Wide, 4.75" Dia., Ryton	B	1	
16		58-0716 10	Screw, Impeller, Stainless Steel, 5/16"-24 x .75" long		1
		58-0716 91	Screw, Impeller, Hastelloy C, 5/16"-24 x .75" long		1
		58-0716 93	Screw, Impeller, Titanium, 5/16"-24 x .75" long		1
17	58-0702 30	Volute, Flat, Polyester	A	1	
	58-0702 60	Volute, Flat, Ryton	A	1	
	58-0773 31	Volute, Buna-N lined polyester	A	1	
	58-0773 32	Volute, EPDM lined polyester	A	1	
	58-0954 30	Volute, Flat polyester	B	1	
	58-0954 60	Volute, Flat Ryton	B	1	
	58-0955 31	Volute, Buna-N lined polyester	B	1	
	58-0955 32	Volute, EPDM lined polyester	B	1	
	58-0977 30	Volute, Flat polyester	C	1	
	58-0977 60	Volute, Flat RYTON	C	1	
	5-19835 31	Volute, Buna-N lined polyester	C	1	
	58-0978 32	Volute, EPDM lined polyester	C	1	
18	58-0725 10	Screw, Side Volute, Stainless Steel, #6-cc x .5" long		2	
	58-0725 91	Screw, Side Volute, Hastelloy C, #6-32 x .5" long		2	
	58-0725 93	Screw, Side Volute, Titanium, #6-32 x .5" long		2	
19	58-0771 10	Screw, Top Volute, Stainless Steel, #10-24 x 1.5" long	A	1	
	58-0771 91	Screw, Top Volute, Hastelloy C, #10-24 x 1.5" long	A	1	
	58-0771 93	Screw, Top Volute, Titanium, #10-24 x 1.5" long	A	1	
	58-0997 10	Screw, Top Volute, Stainless Steel, #10-24 x .5" long	B,C	1	
	58-0997 91	Screw, Top Volute, Hastelloy C, #10-24 x .5" long	B,C	1	
	58-0997 93	Screw, Top Volute, Titanium, #10-24 x .5" long	B,C	1	
20	58-0705 71	Check Valve, Buna-N		1	
	58-0705 72	Check Valve, EPDM		1	
	58-0705 73	Check Valve, Viton		1	
21	58-0720	Screws Body, Plated St. 1/4"-20 x 2-3/8" long		10	
	58-0720 10	Screws Body, Stainless Steel, 1/4"-20 x 2-3/8" long		10	
22	58-1009 71	O-Ring, Drain Plug, Buna-N		1	
	58-1009 72	O-Ring, Drain Plug, EPDM		1	
	58-1009 73	O-Ring, Drain Plug, Viton		1	
23	58-0723 30	Plug, Drain, Polyester		1	
	58-0723 40	Plug, Drain, Polypropylene		1	
	58-0723 60	Plug, Drain, Ryton		1	
24	58-0722 30B	Plug, Filler, Polyester, Black		1	
	58-0722 40	Plug, Filler, Polypropylene		1	
	58-0722 60	Plug, Filler, Ryton		1	
25	58-0765 71	O-Ring, Filler Plug, Buna-N		1	
	58-0765 72	O-Ring, Filler Plug, EPDM		1	
	58-0765 73	O-Ring, Filler Plug, Viton		1	
27	58-0718	Key, Steel		1	
	58-0718 10	Key, 316 Stainless Steel		1	
	58-0718 30	Key, Polyester		1	
	58-0718 91	Key, Hastelloy		1	
	58-0718 93	Key, Titanium		1	
30	58-0778 11	Shim, .006"	As Req'd		
	58-0778 12	Shim, .015"	As Req'd		
	58-0778 13	Shim, .030"	As Req'd		

"S" Series PACER Pumps

Item#	Part No.	Description	Grouping	Qty.
31	58-1014 10	Adapter, Shaft, for close-coupled electric or pneumatic motor, stainless steel, .625" bore		1
	58-1014 93	Adapter, Shaft, for close-coupled electric or pneumatic motor, Titanium, .625" bore		1
	58-1165 10	Adapter, Stainless Steel, for hydraulic motor, .563" bore		1
	58-1165 93	Adapter, Titanium, for hydraulic motor, .563" bore		1
32	58-0883	Set Screw, 1/4" - 20 x .25" long, steel		2
33	58-0745	Keppnuts, 5/16"-18, Plated Steel		4
35	58-1011 20	Pedestal, Hydraulic Motor, molded plastic		1
36	58-0729	Screw, for mounting hydraulic motor to pedestal, 5/16"-18 x 1.0" long, plated steel		4
38	58-1826 71	Pad, rubber saddle		1
39	58-1828 90	Saddle, Electric Motor, 6-3/4" Diameter Motor		1
	58-1825 90	Saddle, 5-3/8" Diameter Motor		1
40	58-1823 40	Baseplate, For pumps close-coupled to electric motors, plastic		1
41	58-0934 10	Strap, For close-coupled electric motor, stainless steel		1
42	58-1001 30A	Body, 1-1/2", NPT polyester, red, change A to B for Black		1
	58-1001 40	Body, 1-1/2", Polypropylene, Gray		1
	58-1001 60	Body, 1-1/2", Ryton, Black		1
	58-1002 30A	Body, 2", NPT polyester, red, change A to B for Black		1
	58-1002 40	Body, 2", Polypropylene, Gray		1
	58-1002 60	Body, 2", Ryton, Black		1
	58-0755 30A	Body, 3", NPT polyester, red		1
	58-0755 40	Body, 3", Polypropylene, gray		1
	58-0755 60	Body, 3", Ryton, black		1
	58-0943 30B	Body, 1-1/2", BSP, polyester, black		1
	58-0784 30B	Body, 2", BSP, polyester, black		1
	58-0877 30B	Body, 3" BSP, Polyester, Black		1
43	58-1015	Screw, Hex Head Cap, 3/8"-16 x 1.25" long, plated steel		4
44	58-1010 20	Adapter, motor, for pump close-coupled to electric or pneumatic motor, molded plastic		1
45	58-1955 71	Seal, lip, .710" I.D., Buna-N		2
	58-1955 73	Seal, lip, .710" I.D., Viton		2
46	58-0882 90	Shaft, sleeve, polyethylene		1
47	58-0884 71	Slinger, Buna-N		1
48	58-1951 90	Housing, Bearing, Cast Metal		1
49	58-1954 90	Bearing, Ball, .787" I.D.		2
50	58-1952 10	Shaft, Stainless Steel, .75"		1
	58-1952 91	Shaft, Hastelloy, .75"		1
	58-1952 93	Shaft, Titanium, .75"		1
51	58-1953 10	Plate, end, Stainless Steel		1
52	58-0730	Flat Washer, .563", Plated Steel		2
53	58-0729	Screw, Plated, 5/16"-18 x 1"		2
54	58-0745	Keppnut, 5/16" - 18, Plated Steel		2
55	58-0759 20	Bearing Pedestal, Molded Plastic		1
56	58-0777	Bearing Shaft Assembly, Standard		1
	58-0777 10	Bearing Shaft Assembly, with Stainless Steel Shaft Sleeve		1
	58-0777 93	Bearing Shaft Assembly, with Titanium Shaft Sleeve		1
55&56	58-2053 01	Assembly, Pedestal, 3/4" Carbon Steel Shaft, includes items 55, 56		1
	58-2053 02	Assembly, Pedestal, 3/4" Carbon Steel Shaft, includes items 55, 56		1
	58-2053 03	Assembly, Pedestal, 3/4" Carbon Steel Shaft, includes items 55, 56		1
57	58-1956 10	Shim, Bearing Shaft, Cast Metal Pedestal, .006" thick	As Req'd.	
58	58-2525 10	Screw, Hex, 1/4"-20 x 3/4", Stainless Steel		4
1 59	58-1950 01	Bearing & pedestal assembly with 3/4" Stainless Steel shaft (includes items (45, 48-51, 57-58)		
	58-1950 01H	Bearing & pedestal assembly with 3/4" Hastelloy shaft (includes items (45, 48-51, 57-58)		1
	58-1950 01T	Bearing & pedestal assembly with 3/4" Titanium shaft (includes items (45, 48-51, 57-58)		1
60	58-0686	Motor, hydraulic		1
61	58-0633	Engine, B&S, 3 HP, Recoil Start		1
	58-0633A	Engine, B&S, 3 HP, I/C Recoil Start		1
	58-0634	Engine, B&S, 4 HP, Recoil Start		1
	58-0635	Engine, B&S, 5 HP, Recoil Start		1
	58-0635A	Engine, B&S, 5 HP, I/C Recoil Start		1
	58-0635H	Engine, Honda, 5 HP, Recoil Start		1
	58-0967	Engine, Tecumseh, 7 HP, Recoil Start		1
	58-0648A	Engine, B&S, 8 HP, I/C Recoil Start, for flex-coupling only		1
	58-0648V	Engine, B&S, 8.5 HP, OHV, Recoil Start, for flex-coupling only		1
62	58-0926	Motor, Pneumatic		1
63	58-0028	Base Plate Kit, Standard Duty. Call for Details		1
	58-0016	Base Plate Kit, Heavy Duty. Call for Details		1
64	58-0885 72	Gasket, Engine Protection, EPDM, 3 & 5 H.P. only		1
65	58-0929	Base Plate, for pumps close-coupled to pneumatic motor		1

"S" Series PACER Pumps Accessories & Options

Option Kit	Part No.	Description	Type of "S" Pumps to be used With/On
X	P-58-0002	Base Runner Kit: Includes two steel runners (rails) with fasteners.	3 or 5 HP engine driven
X	P-58-0003	Rubber Feet Kit: Includes 4 rubber feet with fasteners.	3 or 5 HP engine driven or close coupled to electric motor.
X	P-58-0008	Roll Cage Kit: Includes all fasteners for assembling & mounting pump.	3 or 5 HP engine driven or close coupled to electric motor.
X X	P-58-0010	Hastelloy C Wetted Hardware Kit: Includes Shaft Seal & Wetted Fasteners	All pumps with 704 or 706 impeller except engine driven pumps.
X X	P-58-0061	(Equivalent to part P-58-0010)	All pumps with 974 or 975 impeller except engine driven pumps.
X X	P-58-0067	(Equivalent to part P-58-0010)	All pumps close coupled to engines with 704 to 706 impeller.
X X	P-58-0068	(Equivalent to part P-58-0010)	All pumps close coupled to engines with 974 or 975 impeller.
X X	P-58-0013	Hastelloy C Shaft Seal with Titanium wetted internal fasteners	All pumps with 704 or 706 impeller except pumps close coupled to engines
X X	P-58-0059	(Equivalent to part P-58-0013)	All pumps with 974 or 975 impeller except pumps close coupled to engines.
X X	P-58-0041	(Equivalent to part P-58-0013)	All pumps close coupled to engines with 704 or 706 impeller
X X	p-58-0060	(Equivalent to part P-58-0013)	All pumps close coupled to engines with 974 or 975 impeller.
X	P-58-0001	Pedestal Conversion Kit: Parts to convert to plastic pedestal mount with carbon steel shaft into pump.	All pumps.
X	p-58-0012	Stainless Steel Pedestal Conversion Kit: Parts to convert to plastic pedestal mount with stainless steel shaft into pump	All pumps.
X	P-58-0014	Buna-N Kit: Buna-N fitted shaft seal, check valve, all o-rings to rebuild pump	All pumps
X	P-58-0005	EPDM Kit: Same as 0014, except EPDM	All pumps
X	P-58-0017	VITON Kit: Same as 0014, except Viton.	All pumps
X X	P-58-0016	Heavy-Duty Baseplate: All shims, fasteners for flex coupling pedestal pump to electric motor	Pedestal mounted, and motors with frame size 182, 184, 213 or 215
X X	P-58-0028	Standard Duty Baseplate Kit: Shims, fasteners for flex coupling pedestal pump to electric motor or gas engine	Pedestal mounted, & motors, frame sizes 56, 143, 145 & also 3 or 5 HP engines.
X	P-58-0020	1-1/2" Pipe Fittings Kit, NPT: Two faced steel nipples, one polypropylene elbow (for PVC nipples order 0037)	All 1-1/2" Pumps
X	P-58-0021	2" Pipe Fittings Kit, NPT: Same as kit 0020 (for PVC nipples order 0038)	All 2" Pumps
X	P-58-0022	3" Pipe Fittings Kit, NPT: Same as kit 0020 (for PVC nipples order 0039).	All 3" Pumps
X	P-58-0024	Buna-N Pump Repair Kit: Buna-N Shaft seal, most o-rings, impeller screw, volute screws, shims to repair pump.	All pumps fitted with Buna-N
X	P-58-0025	EPDM Pump Repair Kit: Same as kit P-58-0024, except EPDM	All pumps fitted with EPDM
X	P-58-0026	Viton Pump Repair Kit: Same as kit P-58-0024, except Viton	All pumps fitted with Viton
X	P-58-0040	CC Electric Motor Conversion Kit: All parts needed to convert a pump to close coupled electric motor drive.	All pumps.
X	P-58-0040T	CC Electric Motor Conversion Kit: Same as P-58-0040 Except a Titanium shaft replaces the standard stainless steel shaft.	All pumps
X	P-58-0047	Hydraulic Motor Conversion Kit: Parts to convert pump to CC hydraulic drive, less motor	All pumps
X	P-58-0047T	Hydraulic Motor Conversion Kit: Same as P-58-0047 except a Titanium shaft replaces the standard stainless steel shaft.	All pumps
X	P-58-0048	Hydraulic Motor Baseplate Kit: With fasteners to mount hydraulic motor driven pump	Hydraulic Motor Driven
X	P-58-0074	Pump Repair Kit: Contains 58-0714 12. EPDM fitted shaft seal, EPDM fill, drain & seal-o-rings, o-ring segment, etc., carded.	All pumps fitted with EPDM.
X	P-58-0086	CC Baseplate Kit: Molded base & parts for CC electric drive	1-1/2" & 2" Pumps
X	P-58-0097	Cast Iron Pedestal Conversion Kit: Parts to convert to cast pedestal mount with solid stainless steel shaft.	All pumps.
X	P-58-0097H	Same as P-58-0097 except Hastelloy shaft and Mounting screws.	All pumps.
X	P-58-0097T	Same as P-58-0097 except Titanium shaft and Mounting screws.	All pumps.
X	P-58-0014	Rubber Feet Kit: Includes 4 rubber feet/fasteners	Use with base rails kit 002 on 3 HP or 5 HP engine driven pumps.

“S” Series PACER Pumps Accessories & Options (cont'd)

Option Kit	Part No.	Description	Type of “S” Pumps to be used With/On
X	P-58-0018	Spring Mounted Base Rail Assembly Kit: Adapts engine driven pump to include spring loaded chassis.	3 or 5 HP engine driven pumps.
X	P-58-0135A	Silicon Carbide Shaft Seal, Buna-N: Uses standard stainless steel case & spring, silicon/ carbide faces and Buna-N bellows. Replaces standard carbon/ceramic shaft seal.	All pumps.
X	P-58-0136A	Same as P-58-0135, except EPDM	All pumps.
X	P-58-0137A	Same as P-58-0135, except Viton	All pumps
X	P-58-0158A	HALAR, EPDM, siliconized graphite non-metallic shaft seal	All pumps
X	P-58-0159A	Same as P-58-0158A except Viton	All pumps
X	P-58-0161	1-1/2” Camelot Quick-Disconnect Fittings Kit, NPT: Two quick-disconnect adapters, Type F, one polypropylene elbow.	All pumps
X	P-58-0162	2” Camelot Quick-Disconnect Fittings Kit, NPT: Same as P-58-0161 Except 2” adapters and elbow	All 2” pumps
X	P-58-0163	3” Camelot Quick-Disconnect Fittings Kit, NPT: Same as P-58-0161 Except 3” adapters and elbow	All 3” pumps
X X	P-58-0181A	Polypropylene Encapsulated Impeller Screw: Replaces standard stainless steel impeller screw, P/N P-58-0716 10	All pumps
X X	P-58-0186	Motor Conversion Kit: All parts needed to close-couple pump to series 90 European Motors	All pumps
X	P-58-0187A	Kynar, Polypropylene Elgiloy, EPDM, siliconized graphite shaft seal	All pumps
X	P-58-0188A	Ryton Encapsulated Impeller Screw	All pumps
X		Abrasion Resistant Lined Volute: See parts list or consult factory	All pumps
X	P-58-0189A	Same as P-58-0187A except Viton	All pumps
	P-58-0734	Strainer, 1-1/2” NPT-for end of suction hose, molded polyethylene	All 1-1/2” Pumps
	P-58-0734 91	Strainer, 1-1/2” NPT: Same as above except molded in Halar	All 1-1/2” Pumps
	P-58-0733	Strainer, 2” NPT: For end of suction hose, molded in polyethylene	All 2” pumps
	P-58-0733 91	Strainer, 2” NPT: Same as P-58-0733 except molded in Halar	All 2” Pumps
	P-58-0757	Strainer, 3”, NPT: For end of suction hose, molded polyethylene	All 3” pumps
	P-58-0757 91	Strainer, 3”, NPT: Same as P-58-0757 except molded in Halar	All 3” pumps
	P-58-0753 40	Elbow, 90°, 1-1/2” NPT Street Ell molded polypropylene	All 1-1/2” pumps
	P-58-0752 40	Elbow, 90°, 2” NPT, Same as P-58-0753 40, except 2”	All 2” Pumps
	P-58-0756 40	Elbow, 90°, 3” NPT, Same as P-58-0753 40, except 3”	All 3” Pumps
	P-58-0785	Coupling, Flexible: Connects 3/4” diameter shaft to 5/8” diameter shaft	Pedestal mounted pumps with 56 frame electrical motor
	P-58-0786	Coupling, Flexible: Connects 3/4” diameter shaft to 7/8” diameter shaft	Pedestal mounted pumps with 143T, 145T, or 184 frame size electric motors or engines having 7/8” diameter shafts.
	P-58-0787	Coupling, Flexible: Connects 3/4” diameter shaft to 1-1/8” diameter shaft	Pedestal mounted pumps with 182T or 184T frame size electric motors or engines having 1-1/8” diameter shafts.
	P-58-0788	Coupling, Flexible: Connects 3/4” diameter shaft to 1-3/8” diameter shaft	Pedestal mounted pumps with 213 or 215 frame size electric motors or engines having 1-3/8” diameter shafts.
	P-58-0875	Coupling, Flexible: Connects 3/4” diameter shaft to 1” diameter shaft	Pedestal mounted pumps with motors or engines having 1” diameter shafts.
	P-58-0876	Coupling, Flexible: Connects 3/4” diameter shaft to 3/4” diameter shaft	Pedestal mounted pumps with motors or engines having 3/4” diameter shafts.