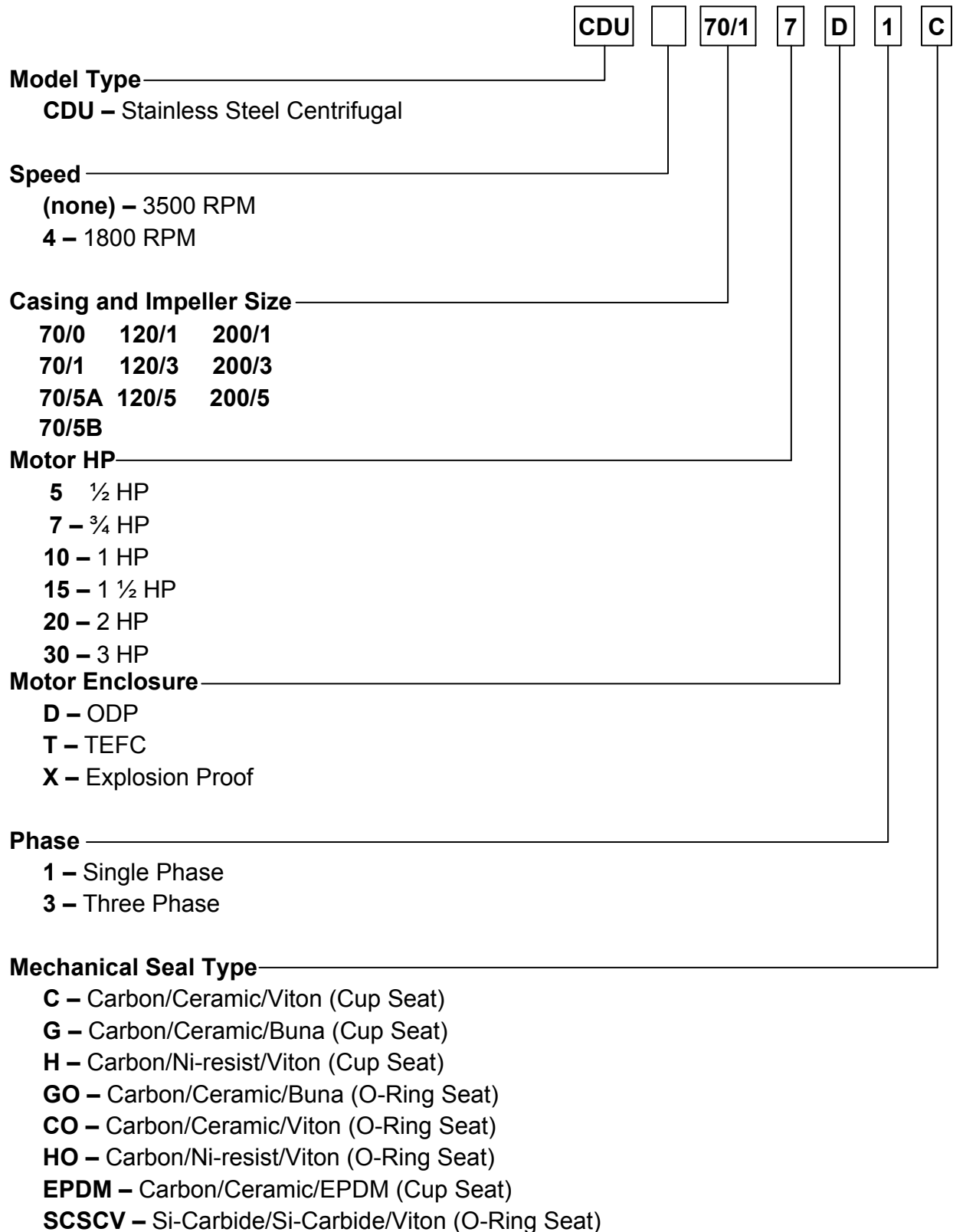


Item No.	Specifications	Selection Chart	Performance Curve	Pump Dimensions	Sectional View
CDU70/0-1/2HP CDU70/1-3/4HP CDU70/3-1½HP CDU70/5A-2HP CDU70/5B-2HP CDU120/1-1HP CDU120/3-1½HP CDU120/5-3HP CDU200/1-1½HP CDU200/3-3HP CDU200/5-3HP	303	305,312	306	318	319



***Note:** Model CDU NSF/ANSI 61 Annex G listed

CONFORMS TO
NSF/ANSI 61, ANNEX G

Model CDU
EBARA Stainless Steel Centrifugal Pumps
Model Designation


Model CDU
EBARA Stainless Steel Centrifugal Pumps
Specifications

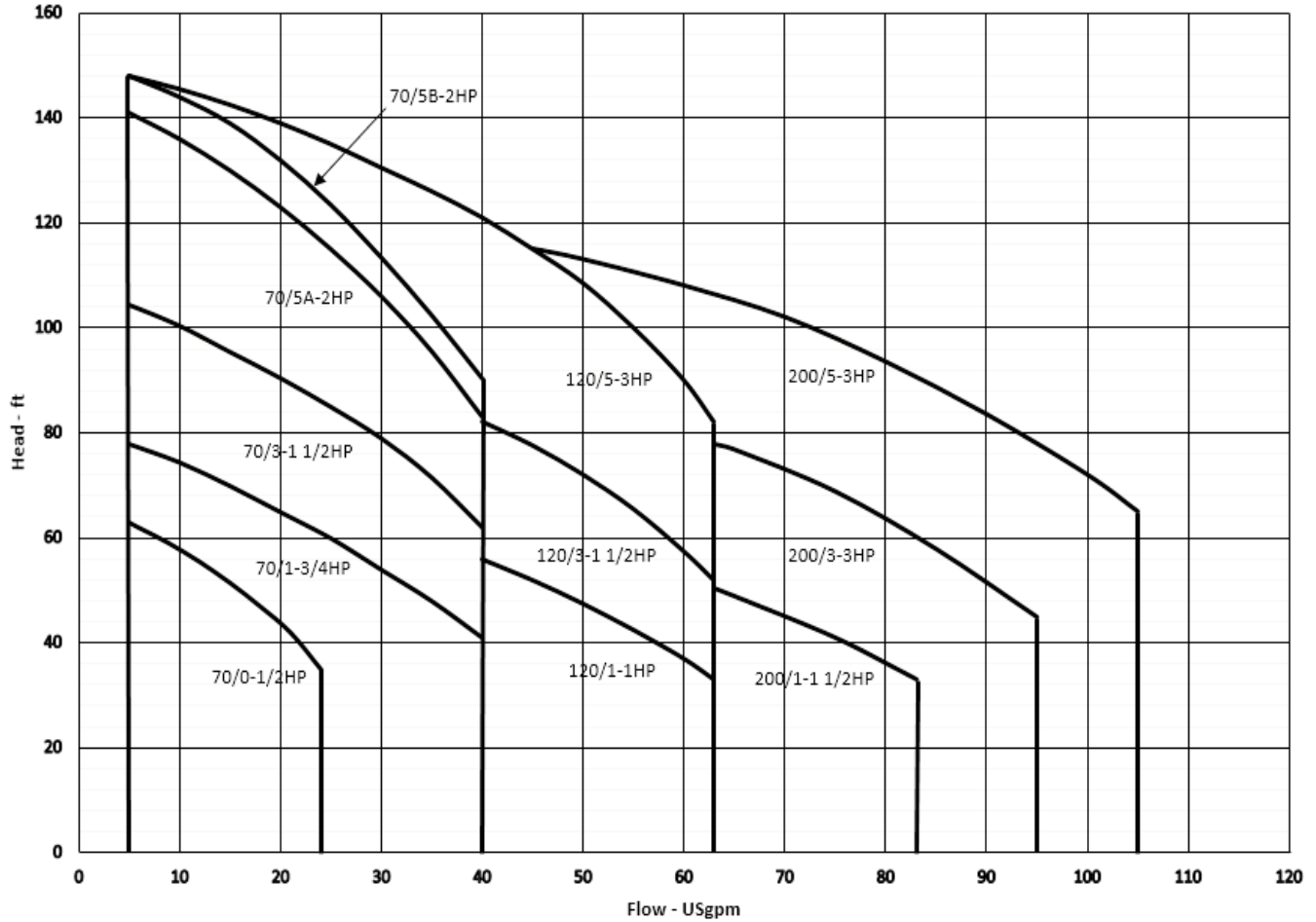
	Standard	Optional
Size Suction Discharge	CDU70 – 1¼" NPT thread CDU120 – 1¼" NPT thread CDU200 – 1½" NPT thread 1" NPT thread	
Range of HP	½ HP to 3 HP	
Range of Performance Capacity Head	5.5 to 95 GPM at 3450 RPM 26 to 144 feet at 3450 RPM	
Liquid handled Type of liquid Temperature Max. working pressure	Water 212°F (100°C) 125 PSI (9 Bar)	Max. 250°F (121°C) with optional high temperature seal
Materials Casing Impeller (closed type) Shaft Bracket Shaft Seal Bearing	304L Stainless Steel 304L Stainless Steel Stainless Steel Aluminum Mechanical Seal – Type 21 Ball Bearing	High temperature version Mild chemical version
Direction of Rotation	Clockwise when viewed from motor end	
Motor Type Speed Single Phase Three Phase Motor Protection	NEMA 56J Frame 60 Hz, 3450 RPM (2 poles) TEFC – ½ HP to 3 HP ODP – ½ HP to 3 HP, 115/230V TEFC – ½ HP to 3 HP ODP – ½ HP to 3 HP, 208-230/460V Built-in overload protection (single phase)	Explosion proof – consult factory Washdown duty – consult factory

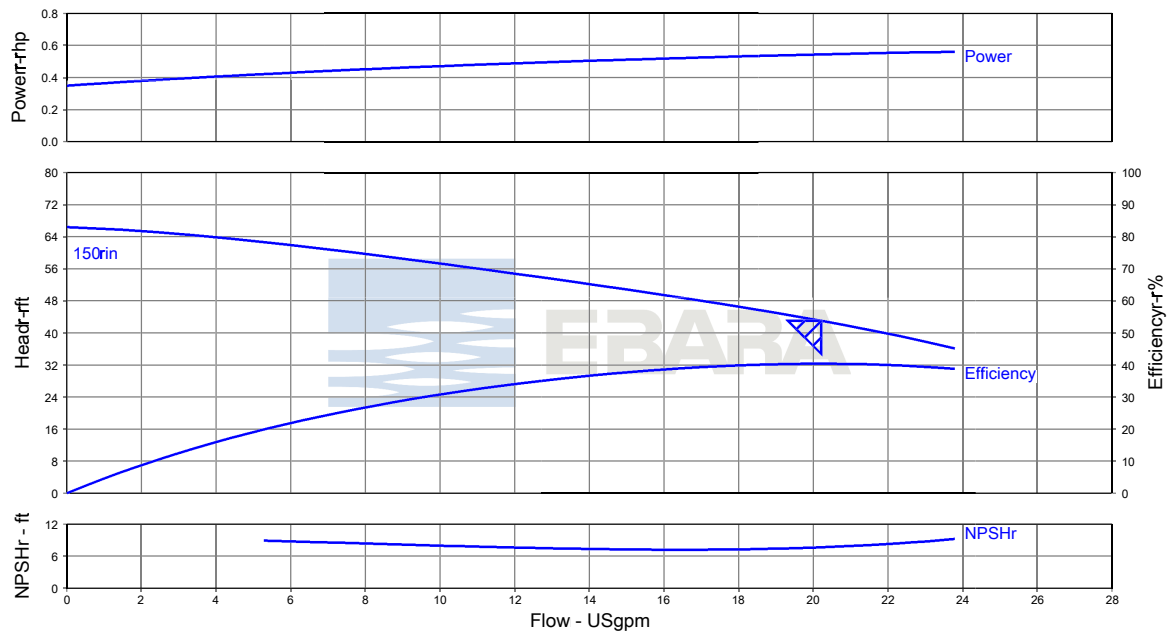
Model CDU

EBARA Stainless Steel Centrifugal Pumps

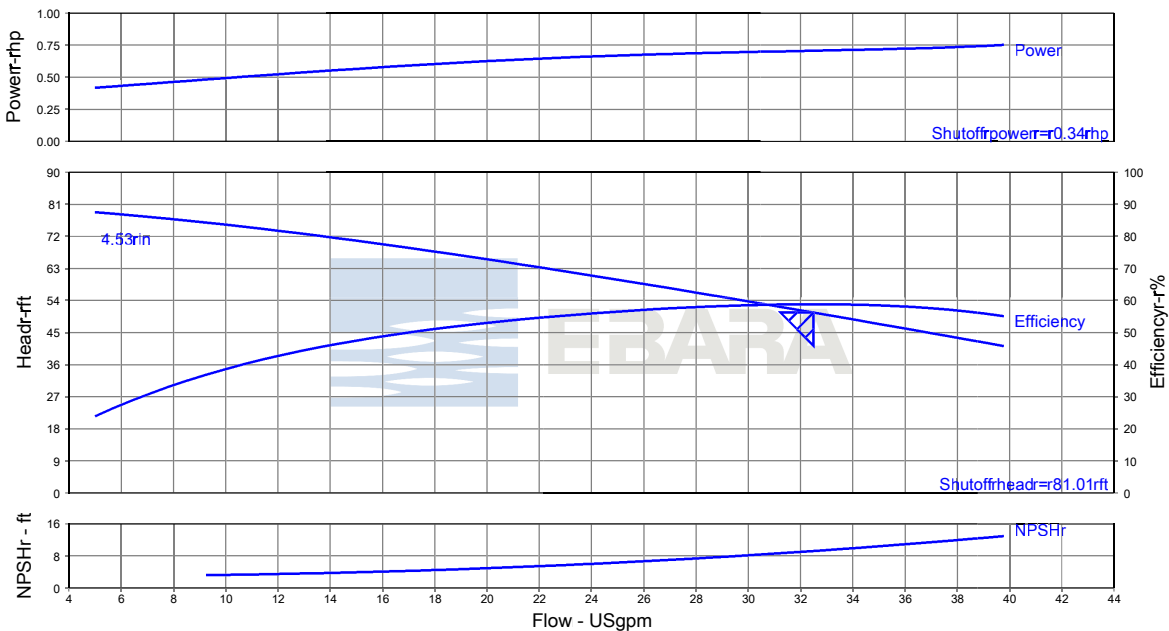
Selection Chart

Nominal Speed 3450 RPM

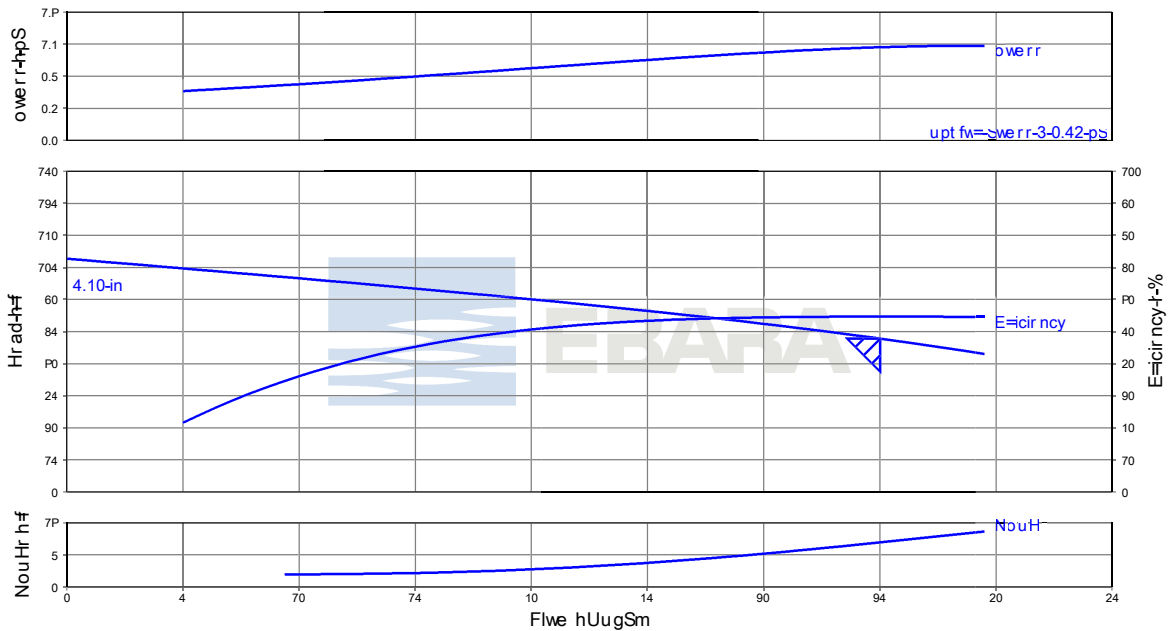


Model CDU
EBARA Stainless Steel Centrifugal Pumps
Performance Curves
CDU70/0-1/2 HP
Nominal Speed: 3450 RPM
Size: 1 x 1 1/4 x 4 1/2


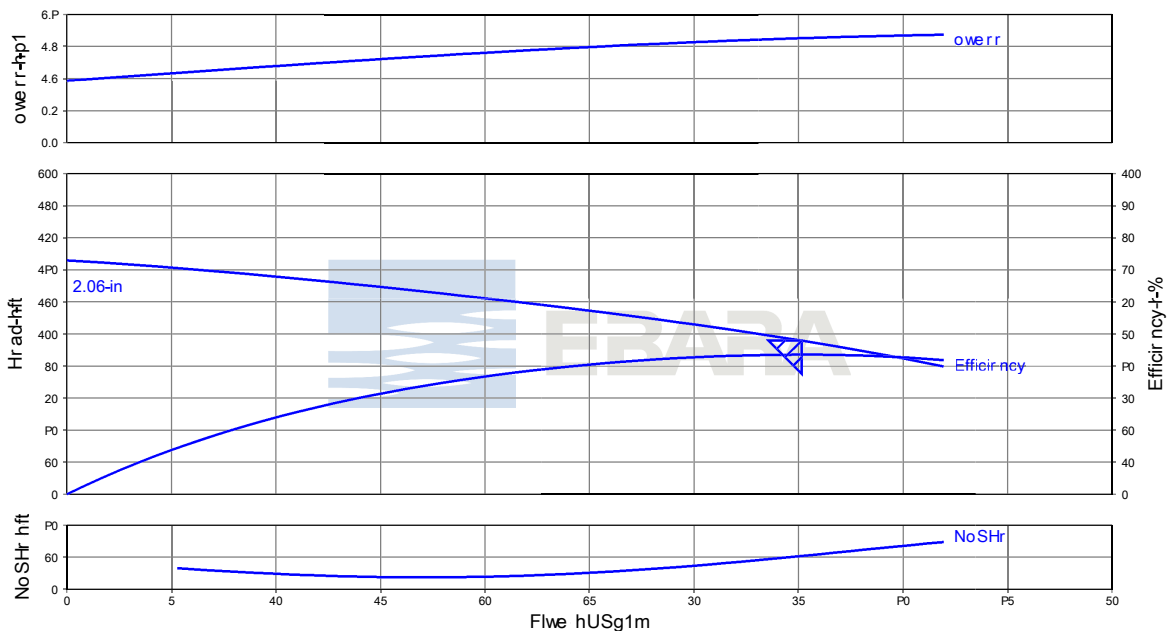
Item number	: 001	Product Description	: CDU70/0-1/2HP	Flow, rated	: 20.21 USgpm
Service	:	Stages	: 1	Head, rated	: 42.98 ft
Quantity	: 1	Speed	: 3450 rpm	NPSH required	: 7.64 ft
Quote number	: 831041	Based on curve number	: CD-C610-9309	Fluid density	: 1.000 / 1.000 SG
Date last saved	: 03 Aug 2018 8:37 AM	Efficiency	: 40.35 %	Viscosity	: 1.00 cP
		Power, rated	: 0.54 hp	Cq/Ch/Ce/Cn [ANSI/HI 9.6.7-2010]	: 1.00 / 1.00 / 1.00 / 1.00

CDU70/1-3/4 HP
Nominal Speed: 3450 RPM
Size: 1 x 1 1/4 x 4 1/2


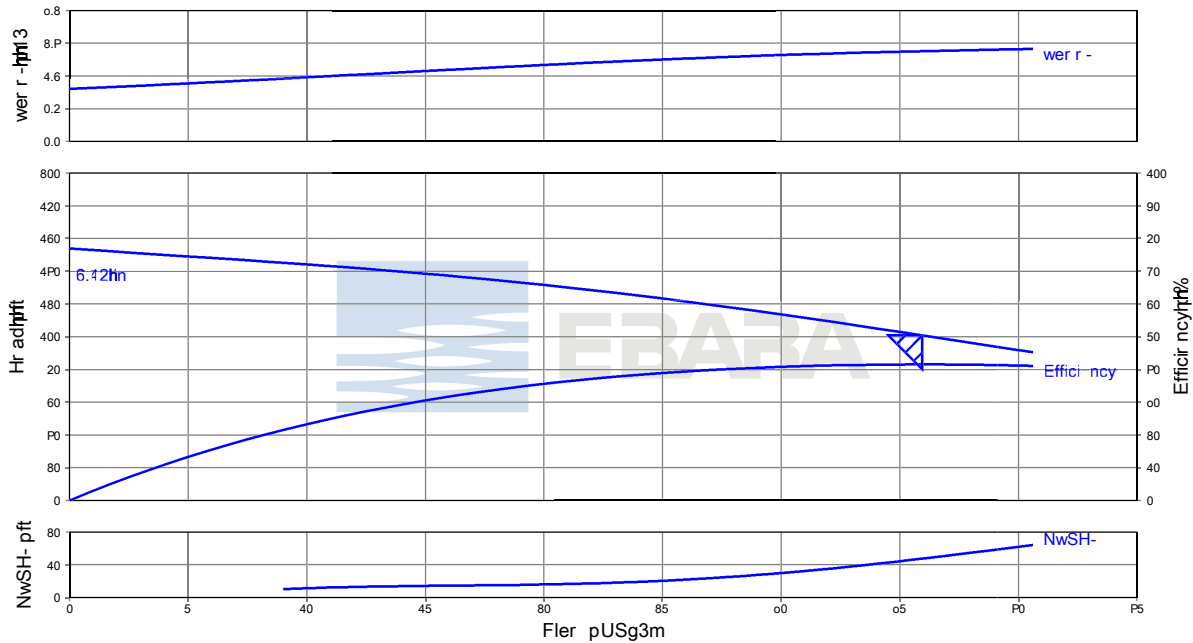
Item number	: 001	Product Description	: CDU70/1-3/4HP	Flow, rated	: 32.50 USgpm
Service	:	Stages	: 1	Head, rated	: 50.59 ft
Quantity	: 1	Speed	: 3450 rpm	NPSH required	: 9.19 ft
Quote number	: 831041	Based on curve number	: CD-C601-9309	Fluid density	: 1.000 / 1.000 SG
Date last saved	: 03 Aug 2018 8:56 AM	Efficiency	: 58.81 %	Viscosity	: 1.00 cP
		Power, rated	: 0.71 hp	Cq/Ch/Ce/Cn [ANSI/HI 9.6.7-2010]	: 1.00 / 1.00 / 1.00 / 1.00

Model CDU
EBARA Stainless Steel Centrifugal Pumps
Performance Curves
CDU70/3-1½ HP
Nominal Speed: 3450 RPM
Size: 1 x 1¼ x 5³/₁₆


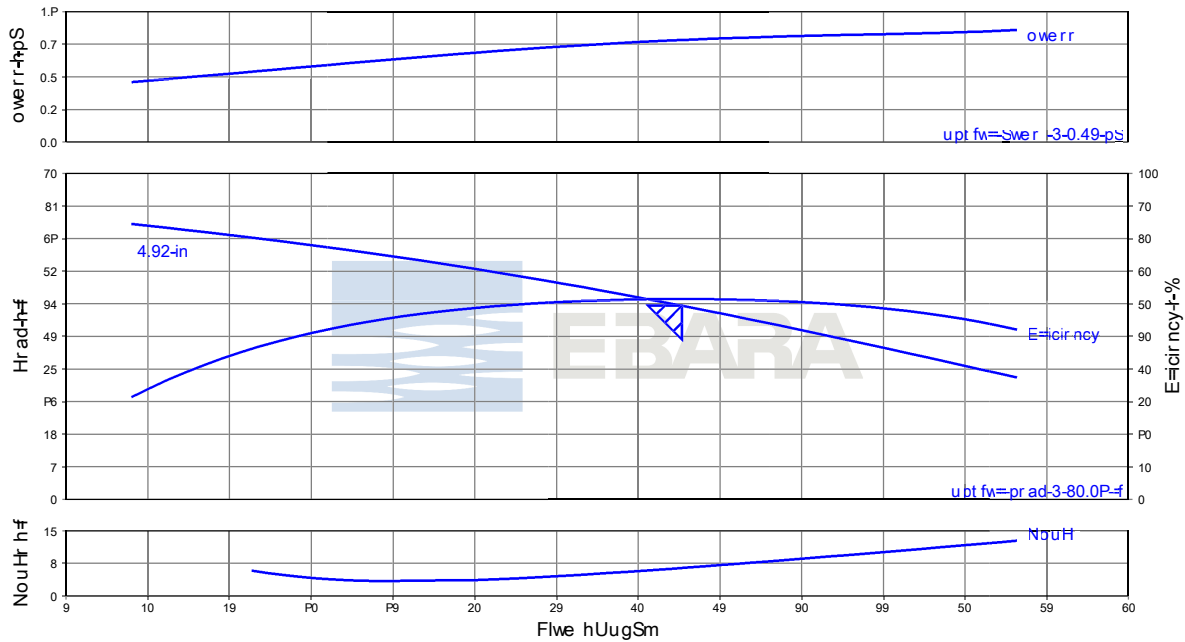
Item number	: 001	Product Description	: CDU70/3-1.5HP	Flow, rated	: 35.02 USgpm
Service	:	Stages	: 1	Head, rated	: 71.66 ft
Quantity	: 1	Speed	: 3450 rpm	NPSH required	: 11.10 ft
Quote number	: 831041	Based on curve number	: CD-C602-9309	Fluid density	: 1.000 / 1.000 SG
Date last saved	: 03 Aug 2018 8:57 AM	Efficiency	: 54.62 %	Viscosity	: 1.00 cP
		Power, rated	: 1.16 hp	Cq/Ch/Ce/Cn [ANSI/HI 9.6.7-2010]	: 1.00 / 1.00 / 1.00 / 1.00

CDU70/5A- 2 HP
Nominal Speed: 3450 RPM
Size: 1 x 1¼ x 6


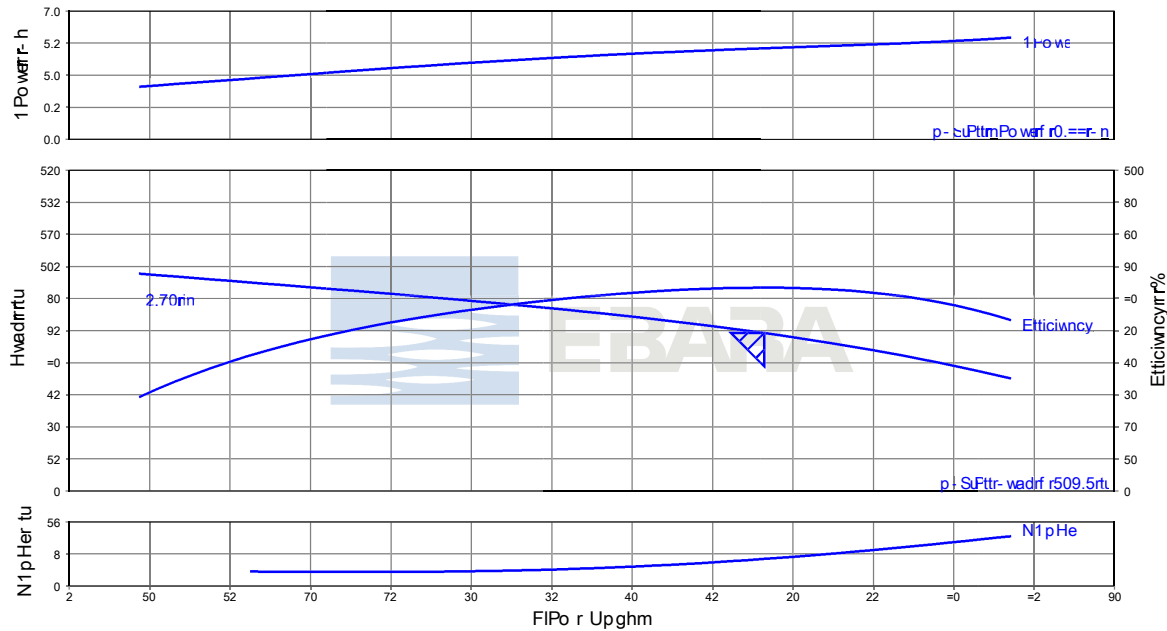
Item number	: 001	Product Description	: CDU70/5A-2HP	Flow, rated	: 35.15 USgpm
Service	:	Stages	: 1	Head, rated	: 95.77 ft
Quantity	: 1	Speed	: 3450 rpm	NPSH required	: 20.71 ft
Quote number	: 831041	Based on curve number	: CD-C603-9309-A	Fluid density	: 1.000 / 1.000 SG
Date last saved	: 03 Aug 2018 8:59 AM	Efficiency	: 43.51 %	Viscosity	: 1.00 cP
		Power, rated	: 1.95 hp	Cq/Ch/Ce/Cn [ANSI/HI 9.6.7-2010]	: 1.00 / 1.00 / 1.00 / 1.00

Model CDU
EBARA Stainless Steel Centrifugal Pumps
Performance Curves
CDU70/5B-2HP
Nominal Speed: 3450 RPM
Size: 1 x 1¹/₄ x 6³/₁₆


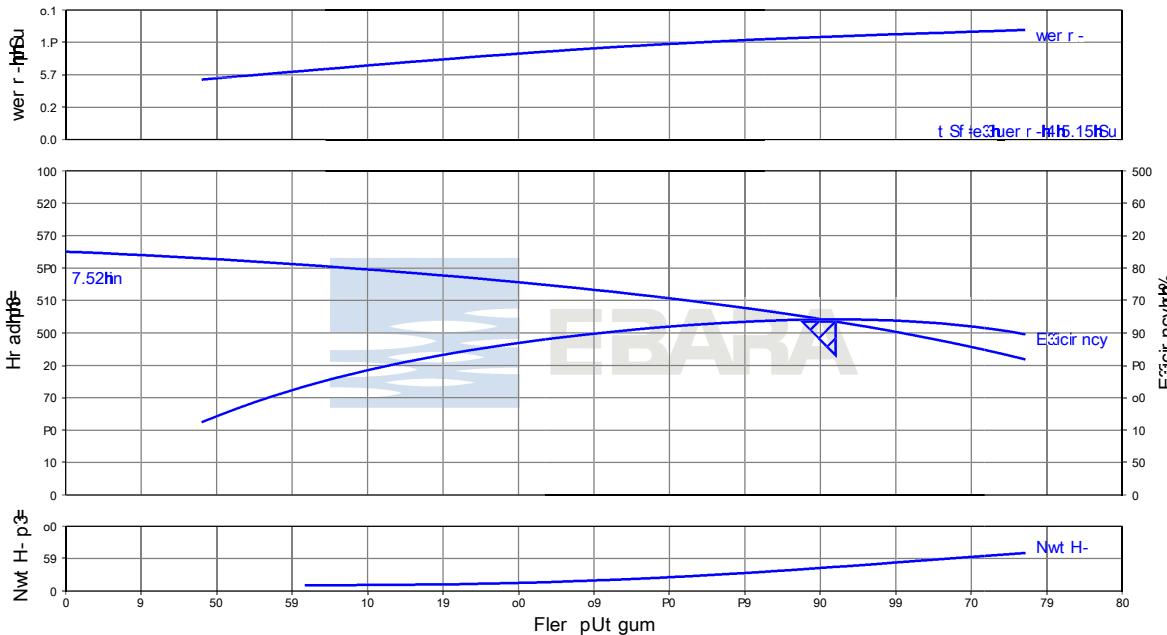
Item number	: 001	Product Description	: CDU70/5B-2HP	Flow, rated	: 35.95 USgpm
Service	:	Stages	: 1	Head, rated	: 100.8 ft
Quantity	: 1	Speed	: 3450 rpm	NPSH required	: 11.83 ft
Quote number	: 831041	Based on curve number	: CD-C603-9309-B	Fluid density	: 1.000 / 1.000 SG
Date last saved	: 03 Aug 2018 9:00 AM	Efficiency	: 41.51 %	Viscosity	: 1.00 cP
		Power, rated	: 2.20 hp	Cq/Ch/Ce/Cn [ANSI/HI 9.6.7-2010]	: 1.00 / 1.00 / 1.00 / 1.00

CDU120/1 1HP
Nominal Speed: 3450 RPM
Size: 1 x 1¹/₄ x 4¹/₂


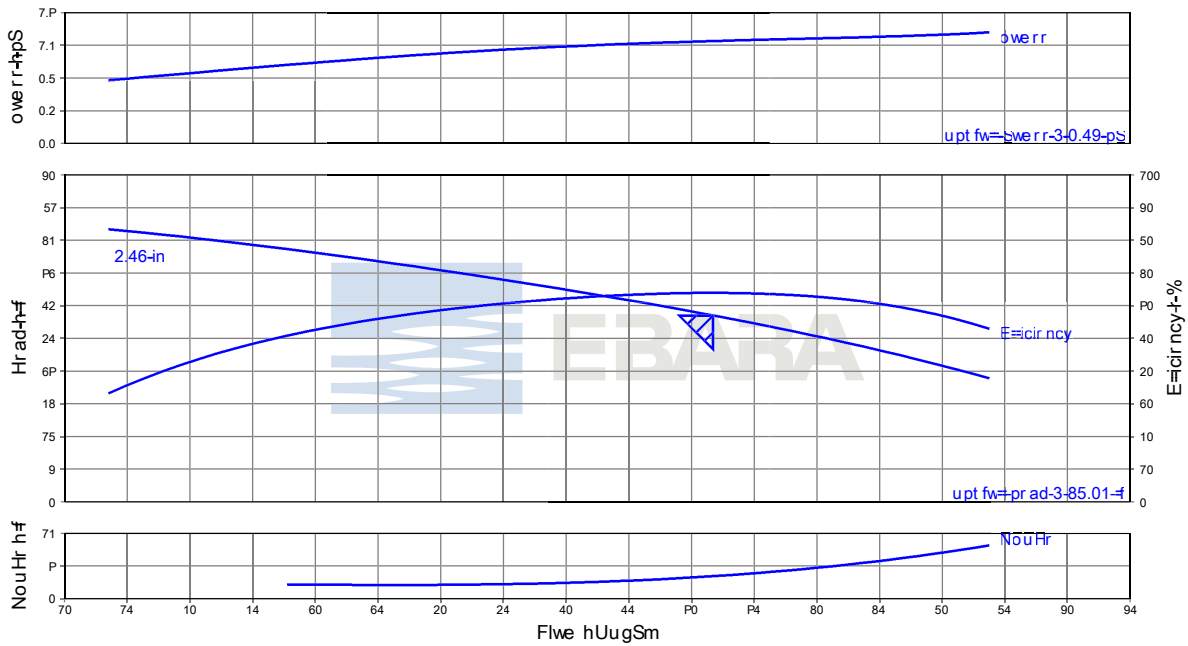
Item number	: 001	Product Description	: CDU120/1-1HP	Flow, rated	: 42.66 USgpm
Service	:	Stages	: 1	Head, rated	: 53.45 ft
Quantity	: 1	Speed	: 3450 rpm	NPSH required	: 6.84 ft
Quote number	: 831041	Based on curve number	: CD-C604-9309	Fluid density	: 1.000 / 1.000 SG
Date last saved	: 03 Aug 2018 9:01 AM	Efficiency	: 61.40 %	Viscosity	: 1.00 cP
		Power, rated	: 0.94 hp	Cq/Ch/Ce/Cn [ANSI/HI 9.6.7-2010]	: 1.00 / 1.00 / 1.00 / 1.00

Model CDU
EBARA Stainless Steel Centrifugal Pumps
Performance Curves
CDU120/3-1¹/₂ HP
Nominal Speed: 3450 RPM
Size: 1 x 1¹/₄ x 5³/₁₆


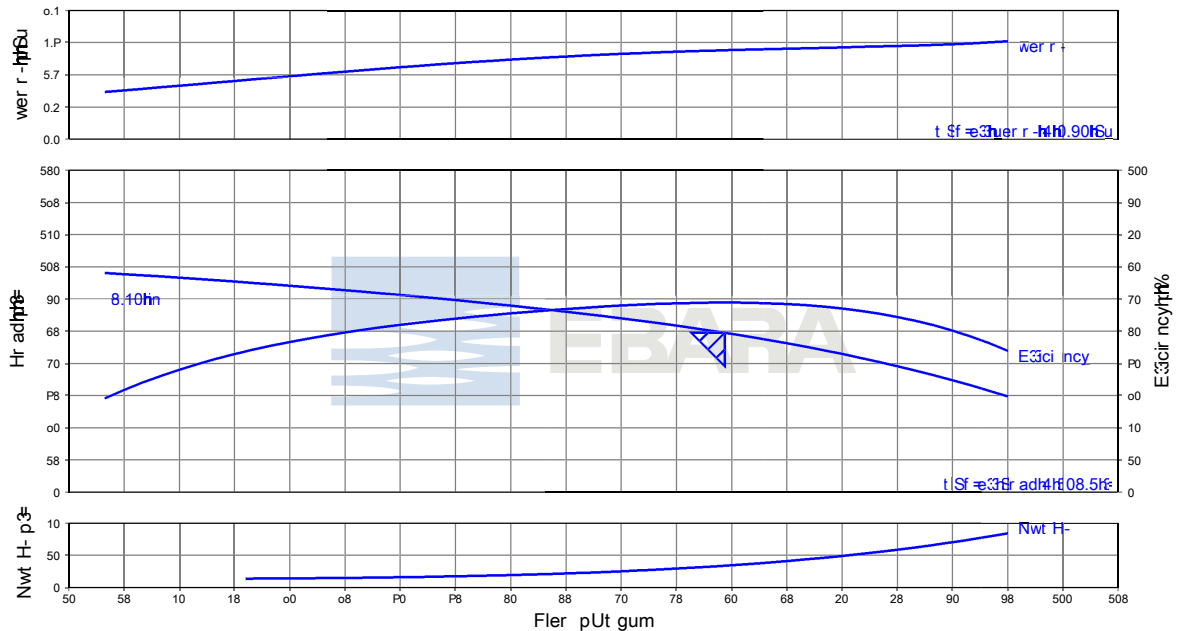
Item number	: 001	Product Description	: CDU120/3-1.5HP	Flow, rated	: 48.21 USgpm
Service	:	Stages	: 1	Head, rated	: 73.81 ft
Quantity	: 1	Speed	: 3450 rpm	NPSH required	: 7.57 ft
Quote number	: 831041	Based on curve number	: CD-C605-9309	Fluid density	: 1.000 / 1.000 SG
Date last saved	: 03 Aug 2018 9:02 AM	Efficiency	: 63.37 %	Viscosity	: 1.00 cP
		Power, rated	: 1.42 hp	Cq/Ch/Ce/Cn [ANSI/HI 9.6.7-2010]	: 1.00 / 1.00 / 1.00 / 1.00

CDU120/5- 3HP
Nominal Speed: 3450 RPM
Size: 1 x 1¹/₄ x 6³/₁₆


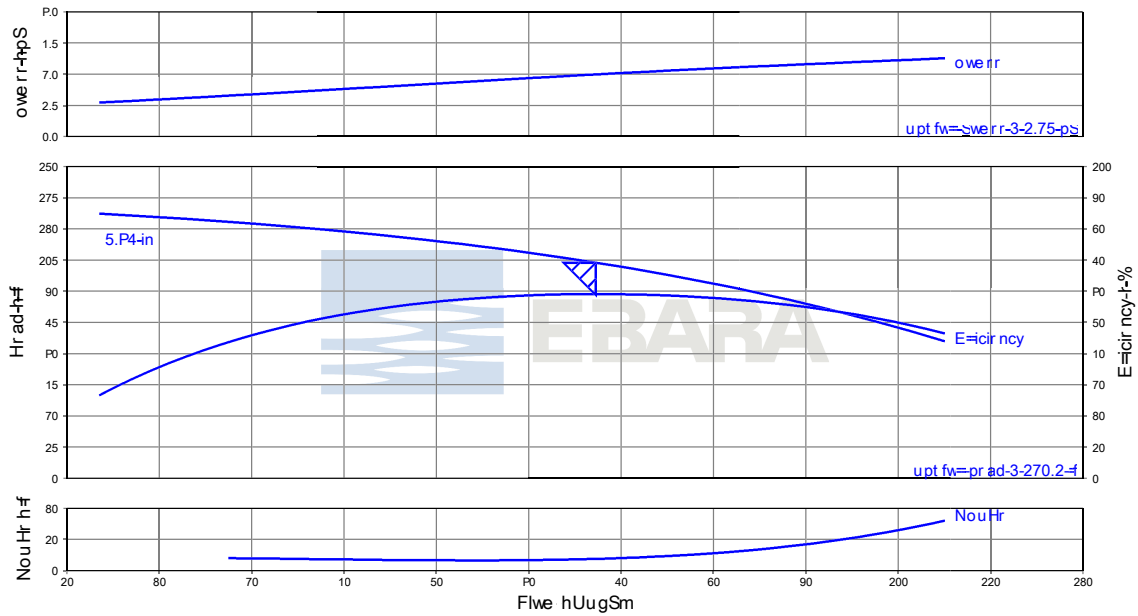
Item number	: 001	Product Description	: CDU120/5-3HP	Flow, rated	: 50.99 USgpm
Service	:	Stages	: 1	Head, rated	: 107.0 ft
Quantity	: 1	Speed	: 3450 rpm	NPSH required	: 11.11 ft
Quote number	: 831041	Based on curve number	: CD-C606-9309	Fluid density	: 1.000 / 1.000 SG
Date last saved	: 03 Aug 2018 9:03 AM	Efficiency	: 54.14 %	Viscosity	: 1.00 cP
		Power, rated	: 2.54 hp	Cq/Ch/Ce/Cn [ANSI/HI 9.6.7-2010]	: 1.00 / 1.00 / 1.00 / 1.00

Model CDU
EBARA Stainless Steel Centrifugal Pumps
Performance Curves
CDU200/1-1½ HP
Nominal Speed: 3450 RPM
Size: 1 x 1½ x 4½


Item number	: 001	Product Description	: CDU200/1-1.5HP	Flow, rated	: 61.72 USgpm
Service	:	Stages	: 1	Head, rated	: 51.28 ft
Quantity	: 1	Speed	: 3450 rpm	NPSH required	: 4.11 ft
Quote number	: 831041	Based on curve number	: CD-C607-9309	Fluid density	: 1.000 / 1.000 SG
Date last saved	: 03 Aug 2018 9:03 AM	Efficiency	: 63.88 %	Viscosity	: 1.00 cP
		Power, rated	: 1.25 hp	Cq/Ch/Ce/Cn [ANSI/HI 9.6.7-2010]	: 1.00 / 1.00 / 1.00 / 1.00

CDU200/3-3 HP
Nominal Speed: 3450 RPM
Size: 1 x 1½ x 5³/₁₆


Item number	: 001	Product Description	: CDU200/3-3HP	Flow, rated	: 69.36 USgpm
Service	:	Stages	: 1	Head, rated	: 74.19 ft
Quantity	: 1	Speed	: 3450 rpm	NPSH required	: 6.75 ft
Quote number	: 831041	Based on curve number	: CD-C608-9309	Fluid density	: 1.000 / 1.000 SG
Date last saved	: 03 Aug 2018 9:04 AM	Efficiency	: 58.85 %	Viscosity	: 1.00 cP
		Power, rated	: 2.21 hp	Cq/Ch/Ce/Cn [ANSI/HI 9.6.7-2010]	: 1.00 / 1.00 / 1.00 / 1.00

Model CDU
EBARA Stainless Steel Centrifugal Pumps
Performance Curves
CDU200/5-3HP
Nominal Speed: 3450 RPM
Size: 1 x 1½ x 5¹¹/₁₆


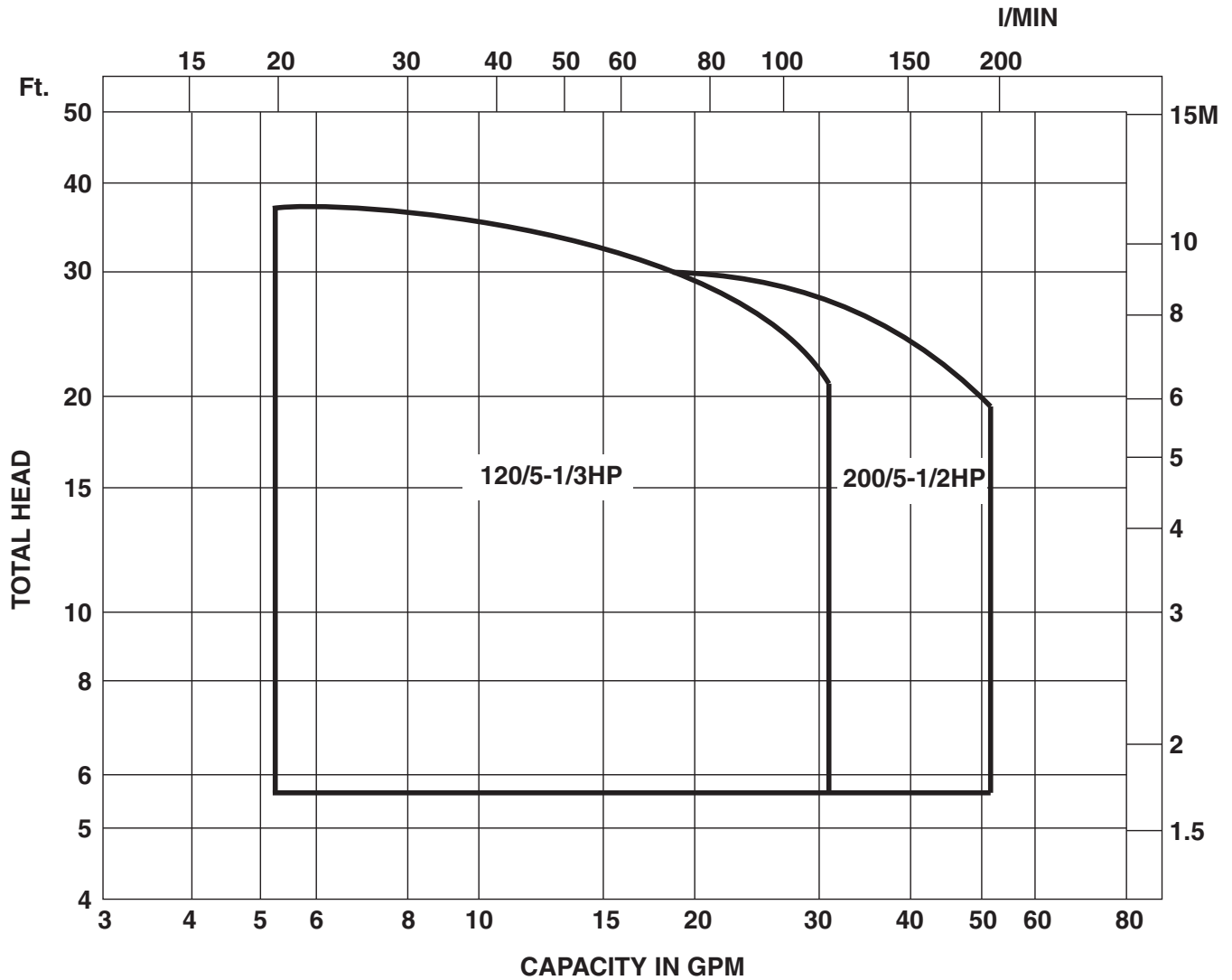
Item number	: 001	Product Description	: CDU200/5-3HP	Flow, rated	: 67.25 USgpm
Service	:	Stages	: 1	Head, rated	: 103.7 ft
Quantity	: 1	Speed	: 3450 rpm	NPSH required	: 3.74 ft
Quote number	: 831041	Based on curve number	: CD-C609-9309	Fluid density	: 1.000 / 1.000 SG
Date last saved	: 03 Aug 2018 9:05 AM	Efficiency	: 59.06 %	Viscosity	: 1.00 cP
		Power, rated	: 2.98 hp	Cq/Ch/Ce/Cn [ANSI/HI 9.6.7-2010]	: 1.00 / 1.00 / 1.00 / 1.00

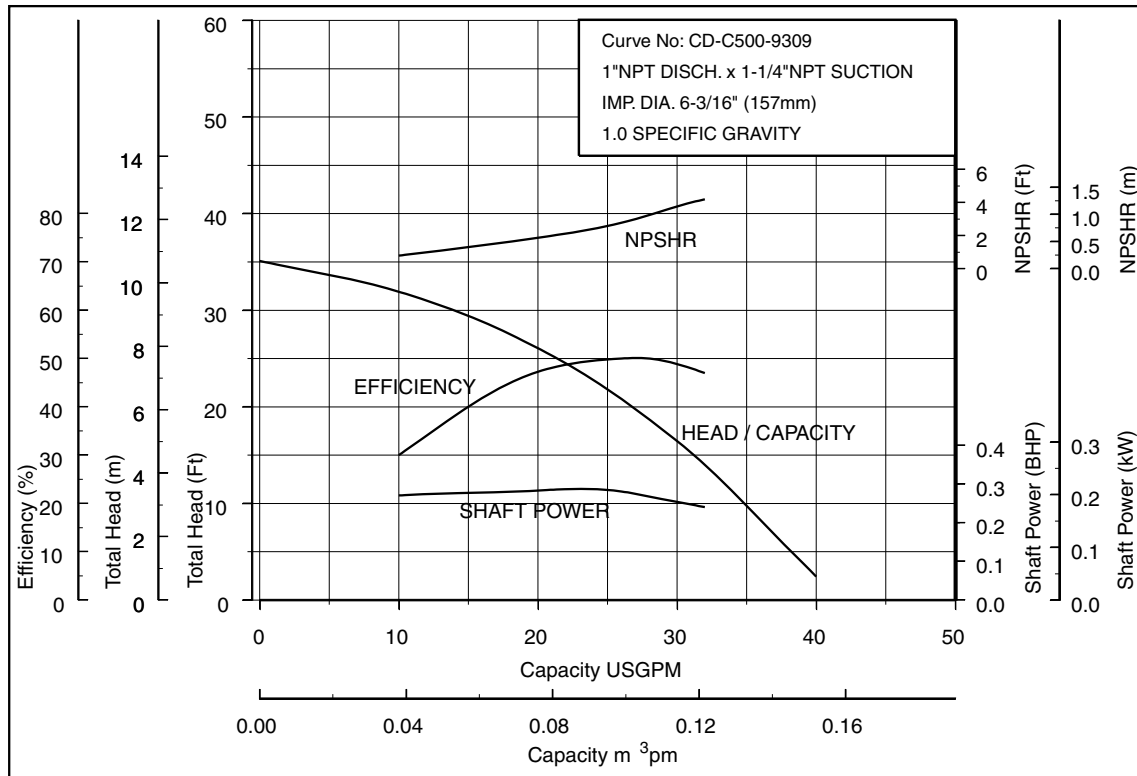
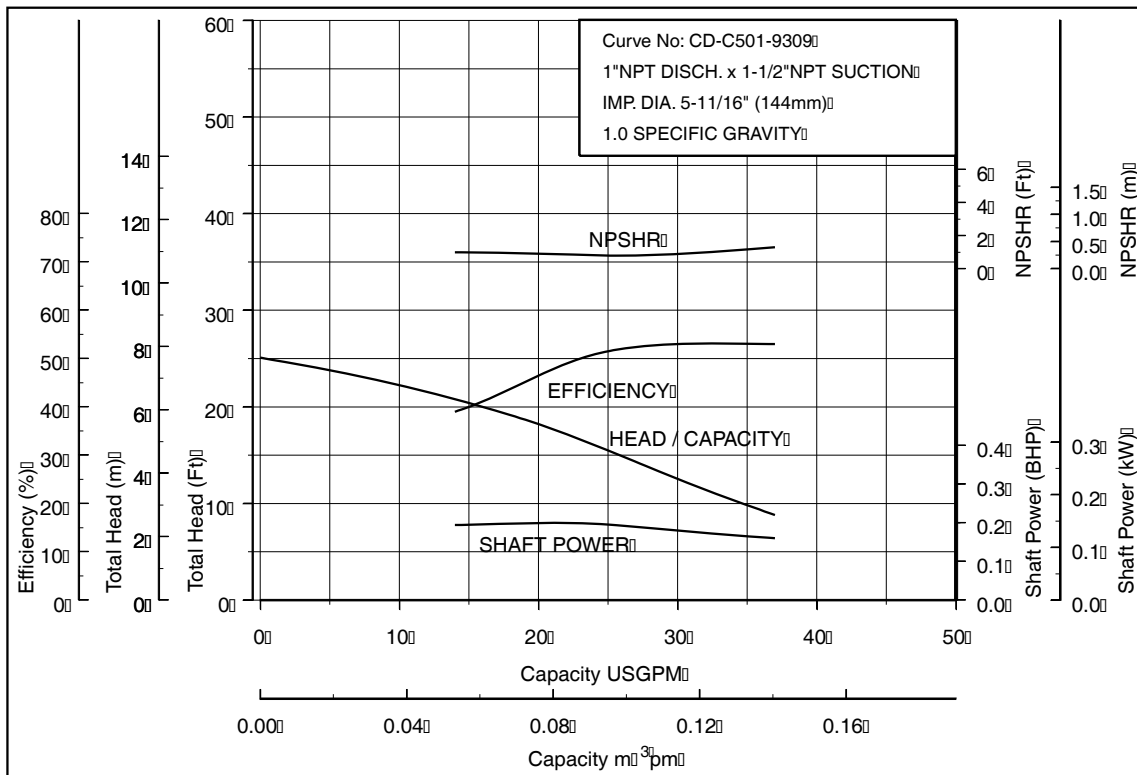
Model CDU

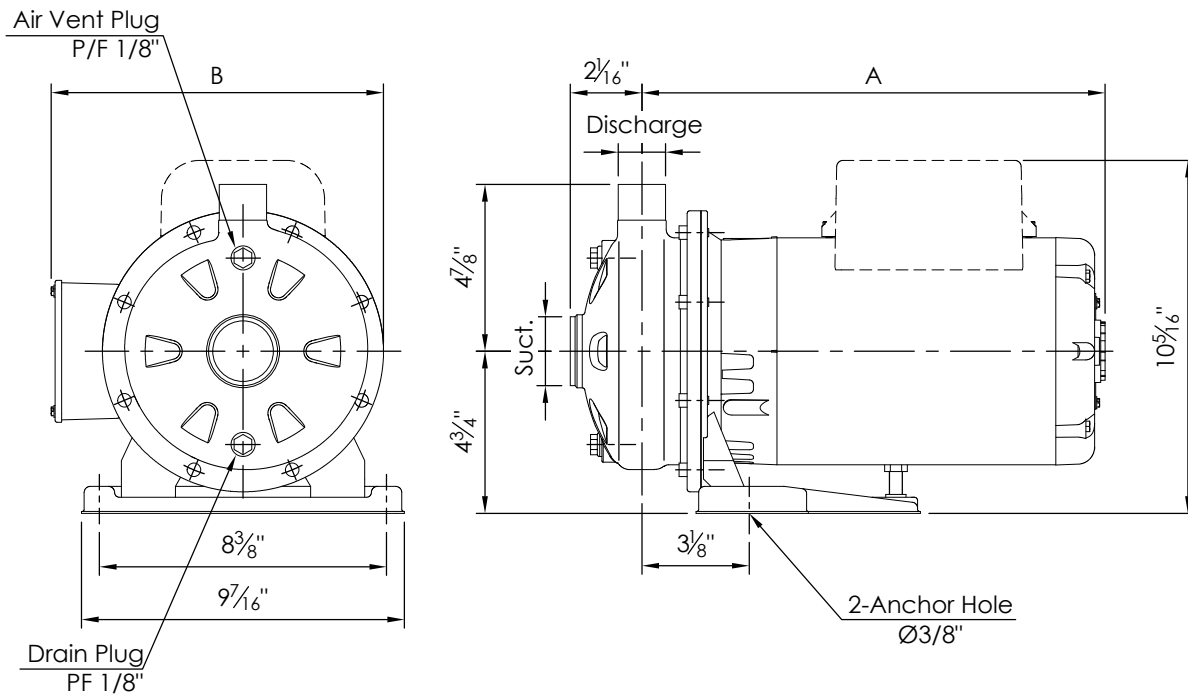
EBARA Stainless Steel Centrifugal Pumps

Selection chart

Nominal Speed 1725 RPM



Model CDU
EBARA Stainless Steel Centrifugal Pumps
Performance Curves
CDU4 120/5-1/3 HP
Nominal Speed: 1725 RPM
Size: 1 x 1 1/4 x 6³/16

CDU4 200/5-1/2 HP
Nominal Speed: 1725 RPM
Size: 1 x 1 1/2 x 5¹¹/16


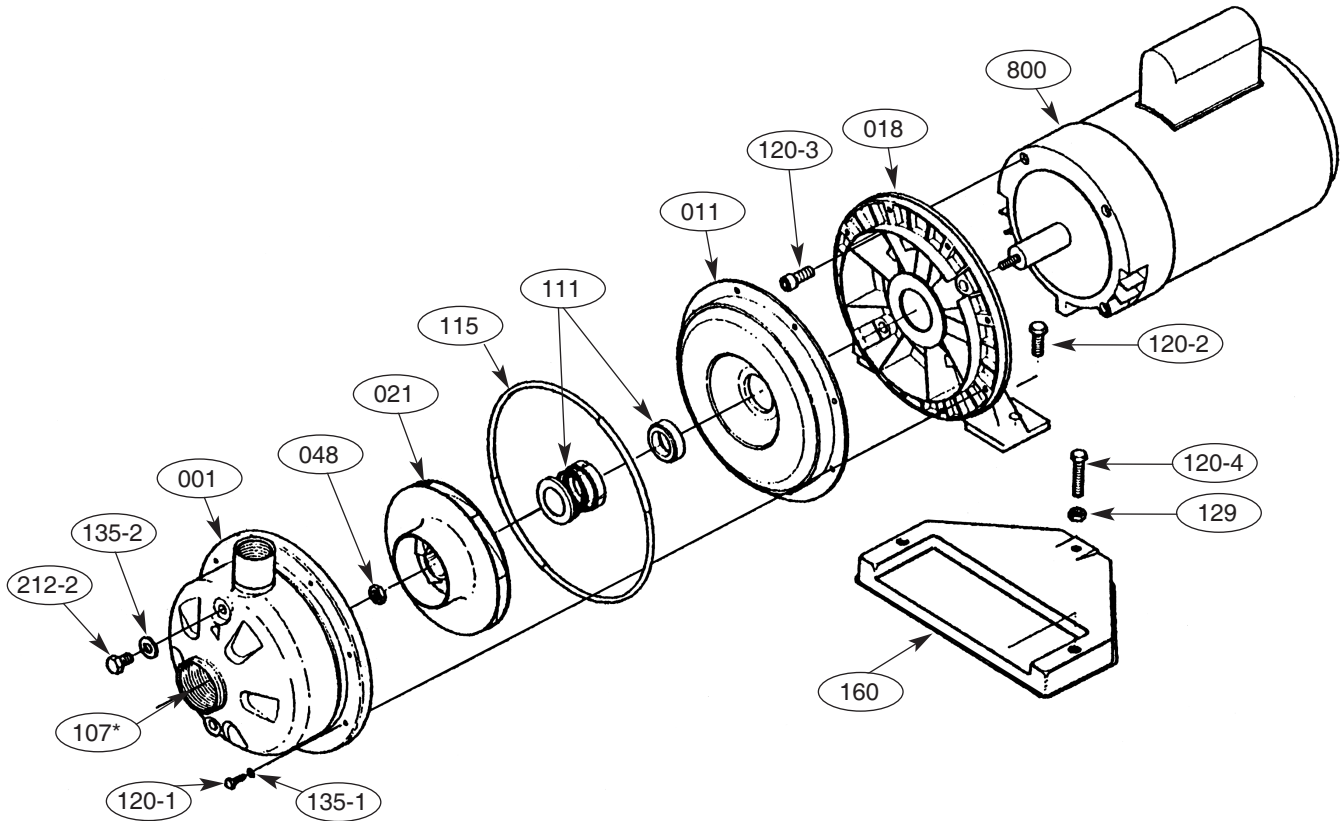
Model CDU
EBARA Stainless Steel Centrifugal Pumps
Pump Dimensions

Model CDU, 2-Pole Motor

Model	Size	Pump Size – NPT (Inch)		Dimension (Inch)	Unit Weight (lbs.)			
		Suction	Discharge	A	Single Phase		Three Phase	
					ODP	TEFC	ODP	TEFC
CDU70/1-3/4HP	1 x 1 ¹ / ₄ x 4 ¹ / ₂	1 ¹ / ₄	1	13 ¹ / ₈ Max.	36	41	31	31
CDU70/3-1 ¹ / ₂ HP	1 x 1 ¹ / ₄ x 5 ³ / ₁₆	1 ¹ / ₄	1	13 ⁹ / ₁₆ Max.	47	50	39	39
CDU70/5-2HP	1 x 1 ¹ / ₄ x 6 ³ / ₁₆	1 ¹ / ₄	1	14 ⁷ / ₁₆ Max.	51	58	44	48
CDU120/1-1HP	1 x 1 ¹ / ₄ x 4 ¹ / ₂	1 ¹ / ₄	1	13 ⁹ / ₁₆ Max.	41	46	33	32
CDU120/3-1 ¹ / ₂ HP	1 x 1 ¹ / ₄ x 5 ³ / ₁₆	1 ¹ / ₄	1	13 ⁹ / ₁₆ Max.	47	50	39	39
CDU120/5-3HP	1 x 1 ¹ / ₄ x 6 ³ / ₁₆	1 ¹ / ₄	1	14 ⁷ / ₁₆ Max.	59	66	51	60
CDU200/1-1 ¹ / ₂ HP	1 x 1 ¹ / ₂ x 4 ¹ / ₂	1 ¹ / ₂	1	13 ⁹ / ₁₆ Max.	47	50	39	39
CDU200/3-3HP	1 x 1 ¹ / ₂ x 5 ³ / ₁₆	1 ¹ / ₂	1	14 ⁷ / ₁₆ Max.	58	65	50	59
CDU200/5-3HP	1 x 1 ¹ / ₂ x 5 ¹¹ / ₁₆	1 ¹ / ₂	1	14 ⁷ / ₁₆ Max.	58	65	50	59

Model CDU, 4-Pole Motor

Model	Size	Pump Size – NPT (Inch)		Dimension (Inch)	Unit Weight (lbs.)			
		Suction	Discharge	A	Single Phase		Three Phase	
					ODP	TEFC	ODP	TEFC
CDU4120/5-1/3HP	1 x 1 ¹ / ₄ x 6 ³ / ₁₆	1 ¹ / ₄	1	13 ¹¹ / ₁₆	32	31	31	30
CDU4200/5-1/2HP	1 x 1 ¹ / ₂ x 5 ¹¹ / ₁₆	1 ¹ / ₂	1	14 ¹¹ / ₁₆	35	31	31	31



Model CDU
EBARA Stainless Steel Centrifugal Pumps
Sectional View


Part No.	Part Name	Material	No. for 1 Unit
001	Casing	304L Stainless	1
011	Casing cover	304L Stainless	1
018	Bracket	Aluminum	1
021	Impeller	304L Stainless	1
048	Impeller nut	304L Stainless	1
107*	Casing ring (*CDU 70 series only)	Viton	1
111	Mechanical seal	—	1
115	O-Ring	Viton	1
120-1	Bolt	304L Stainless	8
120-2	Bolt	304L Stainless	2
120-3	Bolt	304L Stainless	4
120-4	Bolt	304L Stainless	1
129	Nut	304L Stainless	1
135-1	Washer	304L Stainless	8
135-2	Washer	304L Stainless	2
160	Base	Steel	1
212-2	Plug	304L Stainless	2
800	Motor	—	1

