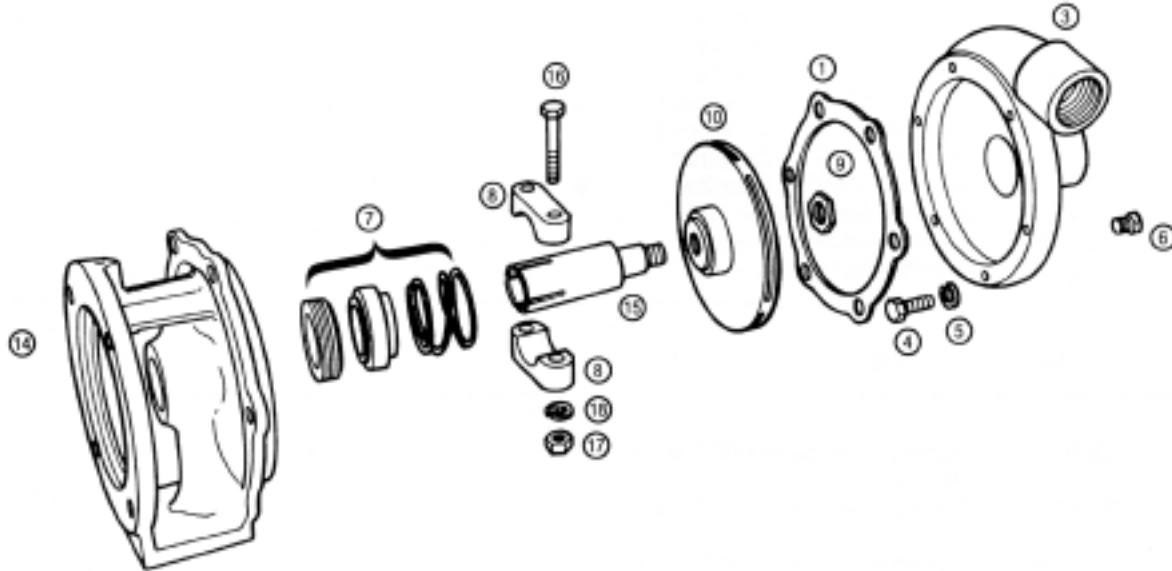


# MP PUMPS SERVICE PARTS LIST

- Straight Centrifugal
- Electric Motor Drive
- Pumpak
- Mechanical Seal

**SERIES 80**  
**1 1/2" x 1 1/4" Pipe Size**



**IMPORTANT:** When ordering parts, specify model and serial number shown on nameplate.  
 N/S means not shown in exploded view of parts.

ITEM NO.	PART NO.	DESCRIPTION	QUANTITY REQUIRED PER MODEL		
			ROTATION	ALL MODELS LISTED ARE RIGHT HAND	
			PIPE SIZE	ALL MODELS LISTED ARE 1-1/2" x 1-1/4"	
			METAL	CAST IRON	BRONZE

**HOUSING**

3	25840	Housing Assembly — Cast Iron Incl.:			
		Housing — Cast Iron		1	
4	25663	Capscrew — S.S. — 3/8" — 16" x 3/4"		6	
5	21266	Lockwasher — S.S. — 3/8" x 1/8"		6	
6	21255	Pipe Plug — S.S. — 1/8"		2	
1	25662	Gasket — Housing		1	
3	25842	Housing Assembly — Bronze Incl.:			
		Housing — Bronze			1
4	25663	Capscrew — S.S. — 3/8" — 16" x 3/4"		6	
5	21266	Lockwasher — S.S. — 3/8" x 1/8"		6	
6	21185	Pipe Plug — Bronze — 1/8"		2	
1	25662	Gasket — Housing		1	



**MP PUMPS, INC.**

34800 BENNETT • FRASER, MI 48026-1686  
 (586) 293-8240 • FAX (586) 293-8469  
 (800) 563-8006 • www.mppumps.com

**FORM 7047-C**

PRINTED IN U.S.A. (8-97)

ITEM NO.	PART NO.	DESCRIPTION	QUANTITY REQUIRED PER MODEL		
			ROTATION	ALL MODELS LISTED ARE RIGHT HAND	
			PIPE SIZE	ALL MODELS LISTED ARE 1-1/2" x 1-1/4"	
			METAL	CAST IRON	BRONZE

**IMPELLER ENCLOSED**

10	25668	Impeller — 5.9" — Bronze	1	1
10	26090	Impeller — 5.75" — Bronze	1	1
10	25443	Impeller — 5.5" — Bronze	1	1
10	25818	Impeller — 5.0" — Bronze	1	1
10	25867	Impeller — 4.8" — Bronze	1	1
10	25988	Impeller — 4.5" — Bronze	1	1
10	25910	Impeller — 5.9" — Cast Iron Optional	1	1
10	25975	Impeller — 5.5" — Cast Iron Optional	1	1
10	26487	Impeller — 5.0" — Cast Iron Optional	1	1
10	26437	Impeller — 4.5" — Cast Iron Optional	1	1
15	25664	Drive Sleeve — S.S. — 7/8"	1	1
15	22253	Drive Sleeve — S.S. — 5/8"	1	1
9	22655	Hex Jam Nut — S.S. — 5/8"	1	1

**SEAL**

7	22272	Seal Assembly	1	1
---	-------	---------------	---	---

**CLAMP**

8	23002	Clamp Assembly — 5/8" Sleeve	1	1
8	23003	Clamp Assembly — 7/8" Sleeve	1	1
16	21264	Clamp	1	1
17	21264	Clamp	2	2
17	21284	Clamp	2	2
18	21238	Clamp	2	2
16	21264	Capscrew — S.S. — 5/16" — 18" x 1-3/4"	2	2
17	21284	Hex Nut — S.S. — 5/16" — 18" x 17/64"	2	2
18	21238	Lockwasher — S.S. — 5/16" x 1/8"	2	2

**ADAPTOR**

14	25332	Adaptor — Cast Iron	1	
14	25674	Adaptor — Bronze		1
12	21251	Capscrew — S.S. — 3/8" — 16" x 7/8"	4	4
13	21266	Lockwasher — S.S. — 3/8" x 1/8"	4	4


**MP PUMPS, INC.**

34800 BENNETT • FRASER, MI 48026-1686  
 (586) 293-8240 • FAX (586) 293-8469  
 (800) 563-8006 • www.mppumps.com

**FORM 7047-C**

PRINTED IN U.S.A. (8-97)