

**CLOSE COUPLED
FOR ELECTRIC MOTOR DRIVE**

*with Mechanical Seal
1 1/4" x 1" Pipe Size*

**SERIES 60
STRAIGHT CENTRIFUGAL
PUMPAKS**

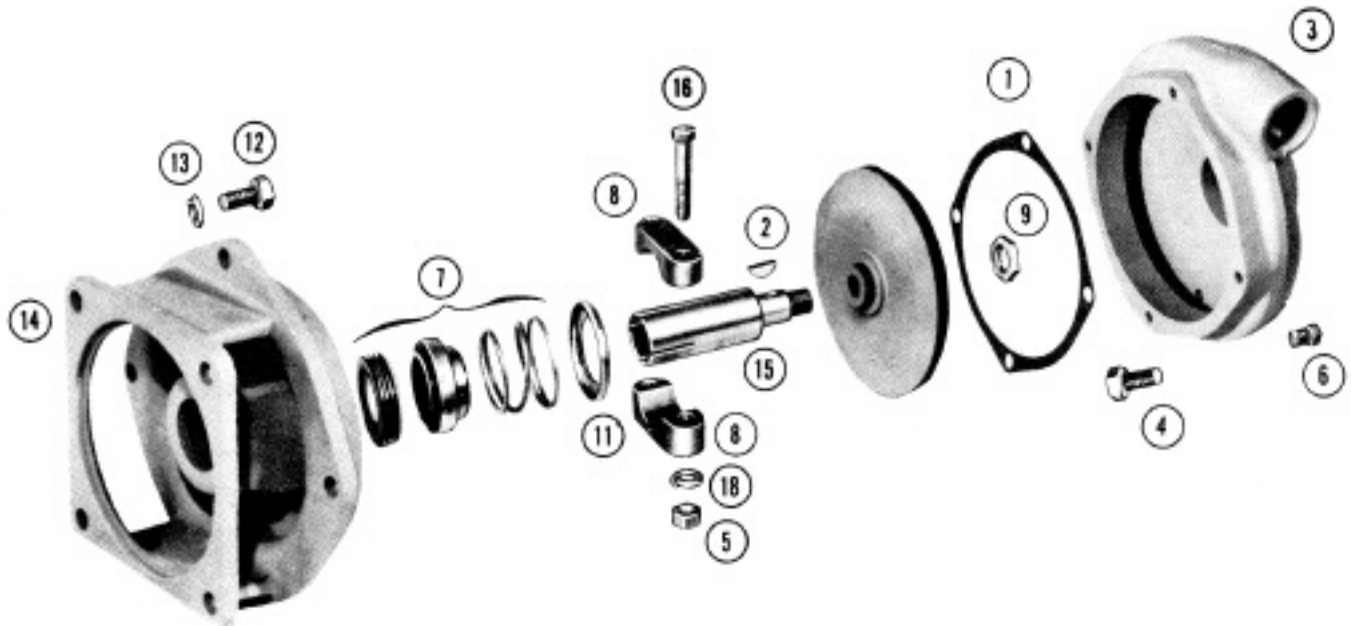


PHOTO IS TYPICAL VIEW ONLY

IMPORTANT: When ordering parts, specify model and serial number shown on nameplate.

ITEM NO.	PART NO.	DESCRIPTION	QUANTITY REQUIRED PER MODEL	
			ROTATION	Right Hand
			PIPE SIZE	1 1/2"x1"
			METAL	Cast Iron
			MODEL NUMBER	27667
				27670
				27673
				27727

HOUSING

ITEM NO.	PART NO.	DESCRIPTION	QUANTITY
	27730	Housing Assembly—Includes:	1
3	27658	Housing — Cast Iron	1
6	21255	Pipe Plug — S.S. — 1/8" NPT	2
1	27665	Gasket	1
4	24965	Capscrew — S.S. — 1/4"	4

IMPELLER

ITEM NO.	PART NO.	DESCRIPTION	QUANTITY
10	27662	Impeller — Bronze 5.50" dia. for Model 27667	1
10	27663	Impeller — Bronze 5.00" dia. for Model 27670	1
10	27664	Impeller — Bronze 4.50" dia. for Model 27673	1
10	27731	Impeller — Bronze 4.10" dia. for Model 27727	1
15	22131	Impeller Drive Sleeve 3/8"	1
9	22588	Lock Nut S.S. — 3/8"	1
2	21865	Impeller Drive Key	1



34800 BENNETT • FRASER, MI 48026-1688
(586) 293-8240 • FAX (586) 293-8469
(800) 563-8006 • www.mppumps.com

**SERVICE PARTS LIST
Form 7088B**

ITEM NO.	PART NO.	DESCRIPTION	QUANTITY REQUIRED PER MODEL	
			ROTATION	Right Hand
			PIPE SIZE	1 1/2"x1"
			METAL	Cast Iron
			MODEL NUMBER	27667
				27670
				27673
				27727

CLAMP

8	23002	Clamp Assembly — Includes:	1
		Clamp	2
5	21284	Hex Nut — S.S. — 3/16"	2
18	21238	Lockwasher — S.S. — 3/16"	2
16	21264	Capscrew — S.S. — 3/16"	2

SEAL

7	22272	Seal Assembly	1
11	22133	Seal Spring Retainer	1

ADAPTOR

14	28593	Adaptor — Cast Iron	1
12	21251	Capscrew — S.S. — 3/8"	4
13	21266	Lockwasher — S.S. — 3/8"	4



34800 BENNETT • FRASER, MI 48026-1686
 (586) 293-8240 • FAX (586) 293-8469
 (800) 563-8006 • www.mppumps.com