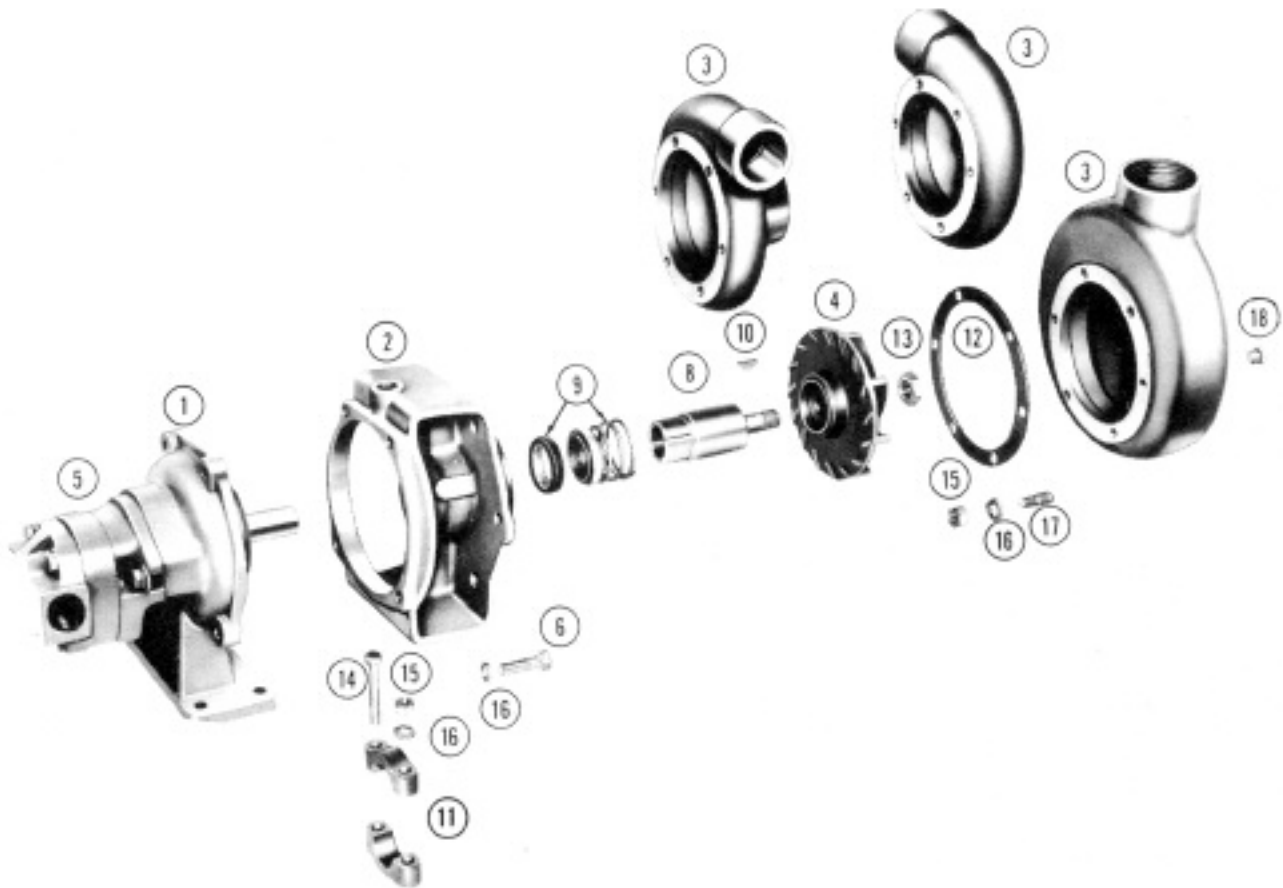


MP PUMPS SERVICE PARTS LIST

- | | | |
|---|---|--|
| <ul style="list-style-type: none"> ● Straight Centrifugal ● Hydraulic Motor Drive | <ul style="list-style-type: none"> ● Pedestal Mounted ● Mechanical Seal | Series 200 2½" x 2" Pipe Size |
|---|---|--|



IMPORTANT: When ordering parts, be sure to specify model and serial number as shown on nameplate.
 N/S means not shown in exploded view of parts

| ITEM NO. | PART NO. | DESCRIPTION | QUANTITY REQUIRED PER MODEL | |
|----------|----------|-------------|-----------------------------|-----------------------------------|
| | | | ROTATION | ALL MODELS LISTED ARE Righthand |
| | | | PIPE SIZE | ALL MODELS LISTED ARE 2-1/2" x 2" |
| | | | METAL | CAST IRON BRONZE |
| | | | MODEL NO. | NA NA |

HOUSING

| | | | |
|----|-------|------------------------------|---|
| | 22937 | Housing Assembly – Includes: | 1 |
| 3 | 21203 | Housing – Cast Iron | 1 |
| 17 | 21260 | Stud – S.S. – 3/8" | 6 |
| 18 | 21267 | Pipe Plug – S.S. – 1/4" NPT | 2 |
| | | | |
| | 22936 | Housing – Includes: | 1 |
| 3 | 21201 | Housing – Bronze | 1 |
| 17 | 21721 | Stud – Br. 3/8" | 6 |
| 18 | 21186 | Pipe Plug – Br. – 1/4" NPT | |

| ITEM NO. | PART NO. | DESCRIPTION | QUANTITY REQUIRED PER MODEL | | |
|----------|-----------|-------------|---|-----------|--------|
| | | | ROTATION ALL MODELS LISTED ARE RIGHT HAND | | |
| | | | PIPE SIZE ALL MODELS LISTED ARE 2-1/2" x 2" | | |
| | | | METAL | CAST IRON | BRONZE |
| | MODEL NO. | NA | NA | | |

HOUSING – Continued

| | | | | |
|----|-------|--------------------------|---|---|
| 15 | 21268 | Hex Nut – S.S. – 3/8" | 6 | |
| 15 | 21230 | Hex Nut – Br. – 3/8" | | 6 |
| 16 | 21266 | Lockwasher – S.S. – 3/8" | 6 | |
| 16 | 26051 | Lockwasher – Br. – 3/8" | | 6 |
| 12 | 21216 | Gasket | 4 | 4 |

IMPELLER, SLEEVE & SEAL

| | | | | |
|----|-------|-----------------------|---|---|
| 4 | 25026 | Impeller – Cast Iron | 1 | |
| 4 | 25543 | Impeller – Bronze | | 1 |
| 13 | 22655 | Locknut – S.S. – 5/8" | 1 | |
| 13 | 21176 | Locknut – Br. – 5/8" | | 1 |
| 8 | 22700 | Sleeve | 1 | 1 |
| 10 | 21762 | Key – S.S. – #8 | 1 | 1 |
| 9 | 22361 | Seal | 1 | 1 |

CLAMP

| | | | | |
|----|-------|----------------------------|---|---|
| | 23039 | Clamp Assembly – Includes: | 1 | 1 |
| 11 | 22356 | Clamp | 2 | 2 |
| 16 | 21266 | Lockwasher – S.S. – 3/8" | 2 | 2 |
| 15 | 21268 | Hex Nut – S.S. – 3/8" | 2 | 2 |
| 14 | 21269 | Capscrew – S.S. – 3/8" | 2 | 2 |

ADAPTOR

| | | | | |
|---|-------|---------------------|---|---|
| 2 | 22704 | Adaptor – Cast Iron | 1 | |
| 2 | 22703 | Adaptor – Bronze | | 1 |

HYDRAULIC PEDESTAL ASSEMBLY

| | | | | |
|-----|-------|------------------------------------|---|---|
| | NA | Hydraulic Pedestal Assy. includes: | 1 | 1 |
| 5 | NA | Hydraulic Motor | 1 | 1 |
| 1 | 25772 | Pedestal only | 1 | 1 |
| 16 | 21266 | Lockwasher S.S. 3/8" | 6 | 6 |
| N/S | 21274 | Capscrew S.S. 3/8" | 6 | 6 |



MP PUMPS, INC.

34800 BENNETT • FRASER, MI 48026-1686
 (586) 293-8240 • FAX (586) 293-8469
 (800) 563-8006 • www.mppumps.com

FORM 7063-A

PRINTED IN U.S.A.—GB