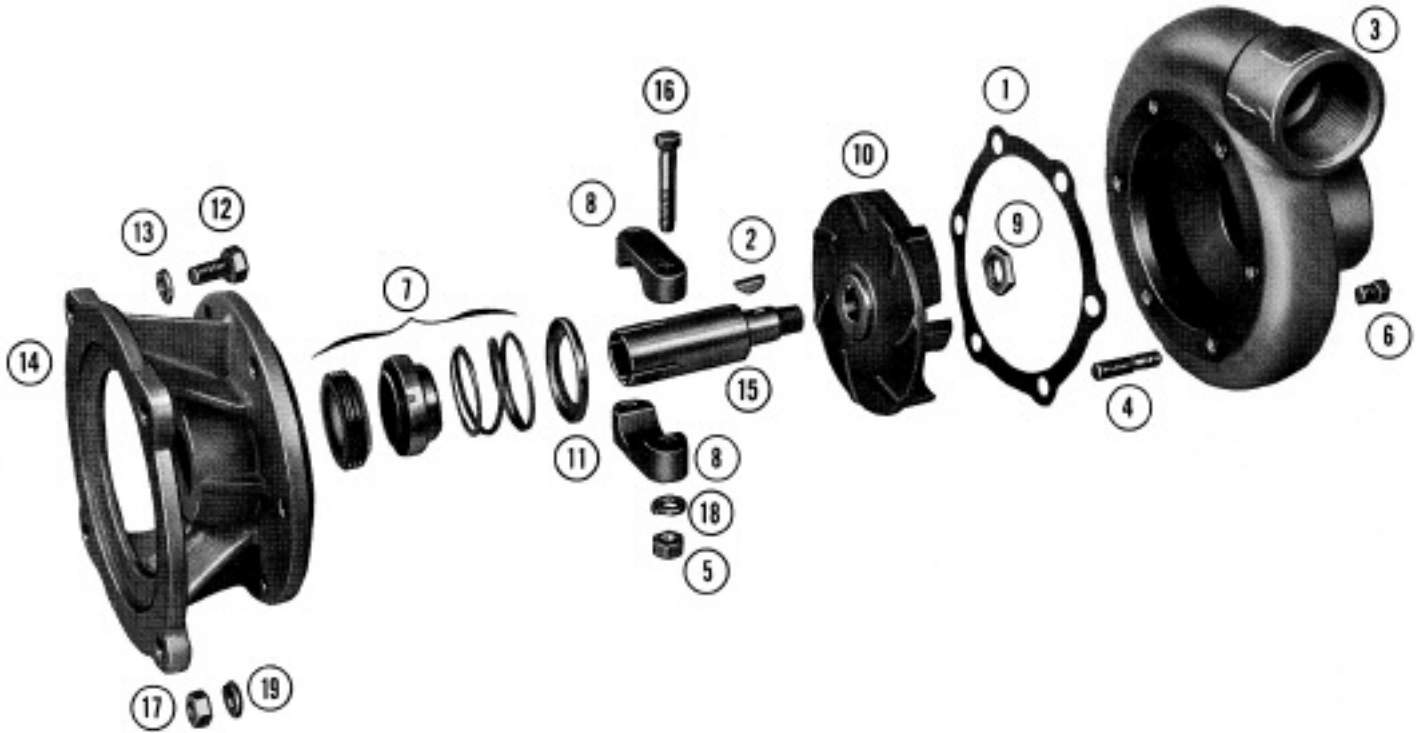


# MP PUMPS SERVICE PARTS LIST

- Straight Centrifugal
- Electric Motor Drive
- Pumpak
- Mechanical Seal

**Series 130**  
**2" x 1½" Pipe Size**



IMPORTANT: When ordering parts, specify model and serial number shown on nameplate.

ITEM NO.	PART NO.	DESCRIPTION	QUANTITY REQUIRED PER MODEL		
			ROTATION	ALL MODELS LISTED ARE RIGHT HAND	
			2" x 1-1/2"	2" x 1-1/2"	2" x 1-1/2"
			PIPE SIZE	ALUMINUM	BRONZE
			METAL	CAST IRON	BRONZE
			MODEL NOS.	23225	23224
				23226	23227
				23231	23230

## HOUSING

	22930	Housing Assembly - Inc.	1		
3		Housing - Cast Iron	1		
4	21243	Stud - S.S. - 5/16"	6		
6	21255	Pipe Plug - S.S. - 1/8" NPT	2		
	<b>NA</b>	Housing Assembly - Inc.:		1	
3		Housing - Aluminum		1	
4	21243	Stud - S.S. - 5/16"		6	
6	21255	Pipe Plug - S.S. - 1/8" NPT		1	
17	21244	Hex Nut - S.S. - 5/16"	6	6	
19	21238	Lockwasher - S.S. - 5/16"	6	6	
	22929	Housing Assembly - Inc.			1
3		Housing - Bronze			1
4	21150	Stud - Br. - 5/16"			6
6	21185	Pipe Plug - Bronze - 1/8" NPT			1
17	21179	Hex Nut - Br. - 5/16"			6
19	21184	Washer - Br.			6
1	21149	Gasket	1	1	1



**MP PUMPS, INC.**

34800 BENNETT • FRASER, MI 48026-1686  
(586) 293-8240 • FAX (586) 293-8469  
(800) 563-8006 • www.mppumps.com

**FORM 7018-B**

PRINTED IN U.S.A.

ITEM NO.	PART NO.	DESCRIPTION	QUANTITY REQUIRED PER MODEL			
			ROTATION	ALL MODELS LISTED ARE RIGHT HAND		
			PIPE SIZE	2" x 1-1/2"	2" x 1-1/2"	2" x 1-1/2"
			METAL	CAST IRON	ALUMINUM	BRONZE
		MODEL NOS.	23225 23228 23231	NA NA NA	23224 23227 23230	

**IMPELLER**

10	22628	Impeller - 4" Dia. - C.I. - (Model 23231)	1		
10	NA	Impeller - 4" Dia. - Alum. - (Model 23229)		1	
10	22627	Impeller - 4" Dia. - Bronze - (Model 23230)			1
10	22675	Impeller - 3-9/16" Dia.-C.I. - (Model 23225 & 23228)	1		
10	NA	Impeller - 3-9/16" Dia. - Alum. - (Model 23223 & 23226)		1	
10	22674	Impeller - 3-9/16" Dia. - Bronze - (Model 23224 & 23227)			1
15	22677	Drive Sleeve, 7/8" Dia. shaft (Models 23223, 23224, 23225, 23229, 23230 and 23231)	1	1	1
15	22676	Drive Sleeve, 5/8" Dia. shaft (Models 23226, 23227 and 23228)	1	1	1
2	21163	Impeller Drive Key - S.S. - #6	1	1	1
9	22621	Impeller Locknut - S.S. - 1/2"	1	1	
9	22629	Impeller Locknut - Br. - 1/2"			1

**SEAL**

7	22272	Seal Assembly Inc.:	1	1	1
11	22133	Seal Spring Retainer	1	1	1

**CLAMP**

	23002	Clamp Assembly for 5/8" Shaft (Models 23226, 23227 & 23228)	1	1	1
8		Clamp	2	2	2
16	21264	Capscrew - S.S. - 5/16"	2	2	2
5	21284	Hex Nut - S.S. - 5/16"	2	2	2
18	21238	Lockwasher - S.S. - 5/16"	2	2	2
	23003	Clamp Assembly for 7/8" Shaft (Models 23223, 23224, 23225, 23229, 23230 & 23231)	1	1	1
8		Clamp	2	2	2
16	21264	Capscrew - S.S. - 5/16"	2	2	2
5	21284	Hex Nut - S.S. - 5/16"	2	2	2
18	21238	Lockwasher - S.S. - 5/16"	2	2	2

**ADAPTOR**

14	22671	Adaptor - Cast Iron	1		
14	22669	Adaptor - Aluminum		1	
14	22670	Adaptor - Bronze			1
12	21251	Capscrew - S.S. - 3/8"	4	4	4
13	21266	Lockwasher - S.S. - 3/8"	4	4	4



**MP PUMPS, INC.**

34800 BENNETT • FRASER, MI 48026-1686  
 (586) 293-8240 • FAX (586) 293-8469  
 (800) 563-8006 • www.mppumps.com

**FORM 7018-B**

PRINTED IN U.S.A.