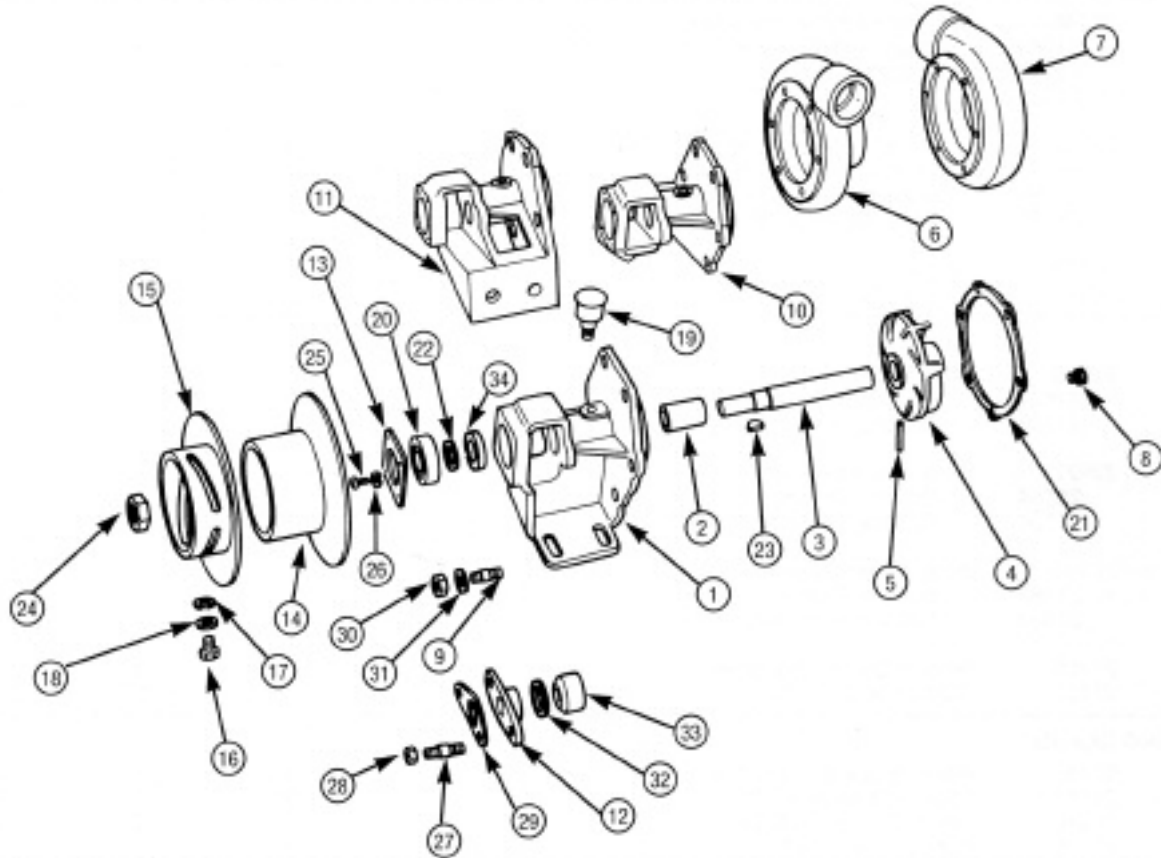


# MP PUMPS SERVICE PARTS LIST

- Bronze Straight Centrifugal
- Belt Drive
- Foot Mounted
- Stuffing Box Seal

**SERIES 130**  
**2" — 1 1/2" Pipe Size**



ITEM	PART NO.	DESCRIPTION	QUANTITY REQUIRED PER MODEL				
			METAL	ALL MODELS LISTED ARE BRONZE			
			ROTATION	R. HAND	L. HAND	R. HAND	L. HAND
			PIPE SIZE	2" x 1-1/2"	2" x 1-1/2"	2" x 1-1/2"	2" x 1-1/2"
MODEL NO.	23170	23125	23171	NA			

**HOUSING**

	22929	Housing Assembly — Inc.:	1			1	
6	21167	Housing — Bronze	1			1	
9	21150	Stud — Br. — 5/16"	6			6	
8	21185	Pipe Plug — Bronze — 1/8" NPT	1			1	
	22931	Housing Assembly — Inc.:			1		1
7	21170	Housing — Bronze			1		1
9	21150	Stud — Br. — 5/16"			6		6
8	21185	Pipe Plug — Bronze — 1/8" NPT			1		1
30	21179	Hex Nut — Bronze — 5/16"	6	6		6	6
31	21184	Washer — Br. — Plain — 5/16"	6	6		6	6
21	21149	Gasket — .010"	4	4		4	4



**MP PUMPS, INC.**

34800 BENNETT • FRASER, MI 48026-1686  
 (586) 293-8240 • FAX (586) 293-8469  
 (800) 563-8006 • www.mppumps.com

**FORM 7016-B**

PRINTED IN U.S.A. (9-95)

ITEM	PART NO.	DESCRIPTION	QUANTITY REQUIRED PER MODEL				
			METAL	ALL MODELS LISTED ARE BRONZE			
			ROTATION	R. HAND	L. HAND	R. HAND	L. HAND
			PIPE SIZE	2" x 1-1/2"	2" x 1-1/2"	2" x 1-1/2"	2" x 1-1/2"
			MODEL NO.	23170	23125	23171	NA

#### IMPELLER

	21146	Shaft and Impeller Assembly — Inc.:				
3	21143	Shaft — S.S. — 5/8"	1		1	
4	21174	Impeller — Br.	1		1	
5	21161	Pin — Br. — 3/16"	1		1	
	21147	Shaft and Impeller Assembly — Inc.:				
3	21143	Shaft — S.S. — 5/8"		1		1
4	21180	Impeller — Br.		1		1
5	21161	Pin — Br. — 3/16"		1		1
34	21198	Slinger	1	1	1	1
23	21163	Key — S.S. — #6	1	1	1	1

#### BODY

	22920	Body Assembly — Inc.:	1	1		
1	21131	Body — Bronze	1	1		
2	21154	Bushing — Bronze — 1.5"	1	1		
	22927	Body Assembly — Inc.:				
10	21164	Body — Bronze			1	
2	21154	Bushing — Bronze — 1.5"			1	
	NA	Body Assembly — Inc.:				
11	NA	Body — Bronze				1
2	21154	Bushing — Bronze — 1.5"				1
19	21160	Grease Cup — Bronze — #00	1	1	1	1
22	21157	Shim — S.S. — 27/32"	U.A.R.*	U.A.R.*	U.A.R.*	U.A.R.*

#### PACKING GLAND

12	21140	Packing Gland — Bronze	1	1	1	1
27	21151	Stud — Bronze — 5/16"	2	2	2	2
28	21178	Hex Nut — Br. — 5/16"	2	2	2	2
29	21189	Nut Lock — 2-1/2"	1	1	1	1
32	21153	Packing — Service	1	1	1	1
32	21188	Packing — Overhaul	1	1	1	1

#### BEARING

20	21159	Bearing	1	1	1	1
13	21142	Bearing Retainer	1	1	1	1
25	21177	Round Head Screw — Bronze — 1/2"	4	4	4	4
26	21621	Lockwasher — #10	4	4	4	4

#### PULLEY

	21194	Pulley Assembly — Right Hand — Inc.	1		1	
14	21193	Pulley	1		1	
15	21195	Flange	1		1	
16	21190	Fillister Head Screw — 1/4"	2		2	
17	21191	Nut Lock	2		2	
18	21192	Lockwasher — 1/4"	2		2	
	NA	Pulley Assembly — Left Hand — Inc.			1	1
14	NA	Pulley			1	1
15	NA	Flange			1	1
16	NA	Fillister Head Screw — 1/2"			2	2
17	NA	Nut Lock — 9/16"			2	2
18	21192	Lockwasher — 15/32"			2	2
24	21176	Nut — Bronze — 5/8"	1	1	1	1

\*U.A.R. — Use as required



**MP PUMPS, INC.**

34800 BENNETT • FRASER, MI 48026-1686  
 (586) 293-8240 • FAX (586) 293-8469  
 (800) 563-8006 • www.mppumps.com

**FORM 7016-B**

PRINTED IN U.S.A. (9-95)