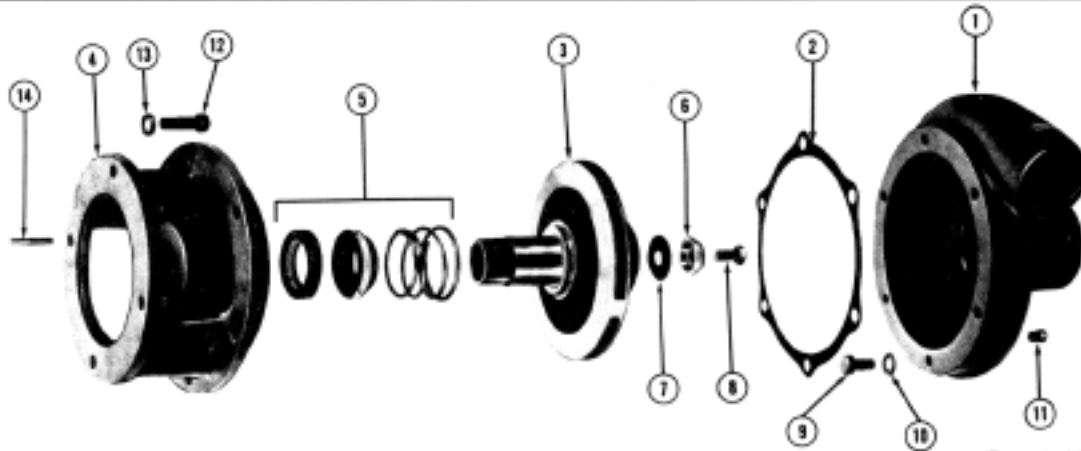


# MP PUMPS SERVICE PARTS LIST

- Straight Centrifugal
- Electric Motor Drive

- JM Type Motor
- Mechanical Seal

**Series 120**  
**2" x 1½" Pipe Size**



*Centrifugal Pumpak*

**IMPORTANT:** When ordering parts, specify MODEL and SERIAL NUMBER shown on nameplate.  
N/S means "not shown" in exploded view of parts.

ITEM	PART NO.	DESCRIPTION	QUANTITY REQUIRED PER MODEL		
			METAL	CAST IRON	BRONZE
			SERIES 120	26593	26613
		MODEL NO.	26595	26982	
1	26647	Housing Assy. - Cast Iron - Inc: Housing - Cast Iron		1	
9	25663	Capscrew - S.S. Adaptor to Housing 3/8"		6	
10	21266	Lockwasher S.S. 3/8" (Note: Drain plug not included)		6	
2	25662	Gasket, Housing to Adaptor .032		1	
11	21255	Drain Plug S.S. 1/8" NPT		2	
8	26589	Seelbolt S.S. 3/8" - 16 x 1"		1	
1	26966	Housing Assy. - Bronze - Inc: Housing - Bronze			1
9	25663	Capscrew - S.S. Adaptor to Housing 3/8"			6
10	21266	Lockwasher S.S. 3/8" (Note: Drain plug not included)			6
2	25662	Gasket, Housing to Adaptor .032			1
11	21185	Drain Plug - Bronze			2
8	26589	Seelbolt S.S. 3/8" - 16 x 1"			1
6	26590	Sealwasher - Impeller		1	1
7	26591	Gasket - Impeller sealing Teflon		1	1
3	26594	Impeller - Enclosed - Bronze 5.0" (For Model 26595 and 26982)		1	
3	26585	Impeller - Enclosed - Bronze 5.9" (For Model 26593 and 26613)		1	1
5	22361	Seal Assembly 1-1/2"		1	1
4	26583	Adaptor - Cast Iron		1	
4	26611	Adaptor - Bronze			1
12	21291	Capscrew S.S. 3/8" - 16 x 1-1/8"		4	4
13	21266	Lockwasher S.S. 3/8"		4	4
14	26588	Square Key - Drive Shaft .188		1	1
N/S	26592	Stinger - Impeller Shaft		1	1

N/S - Not Shown



**MP PUMPS, INC.**

34800 BENNETT • FRASER, MI 48026-1686  
(586) 293-8240 • FAX (586) 293-8469  
(800) 563-8006 • www.mppumps.com

**FORM 7066-B**

PRINTED IN U.S.A