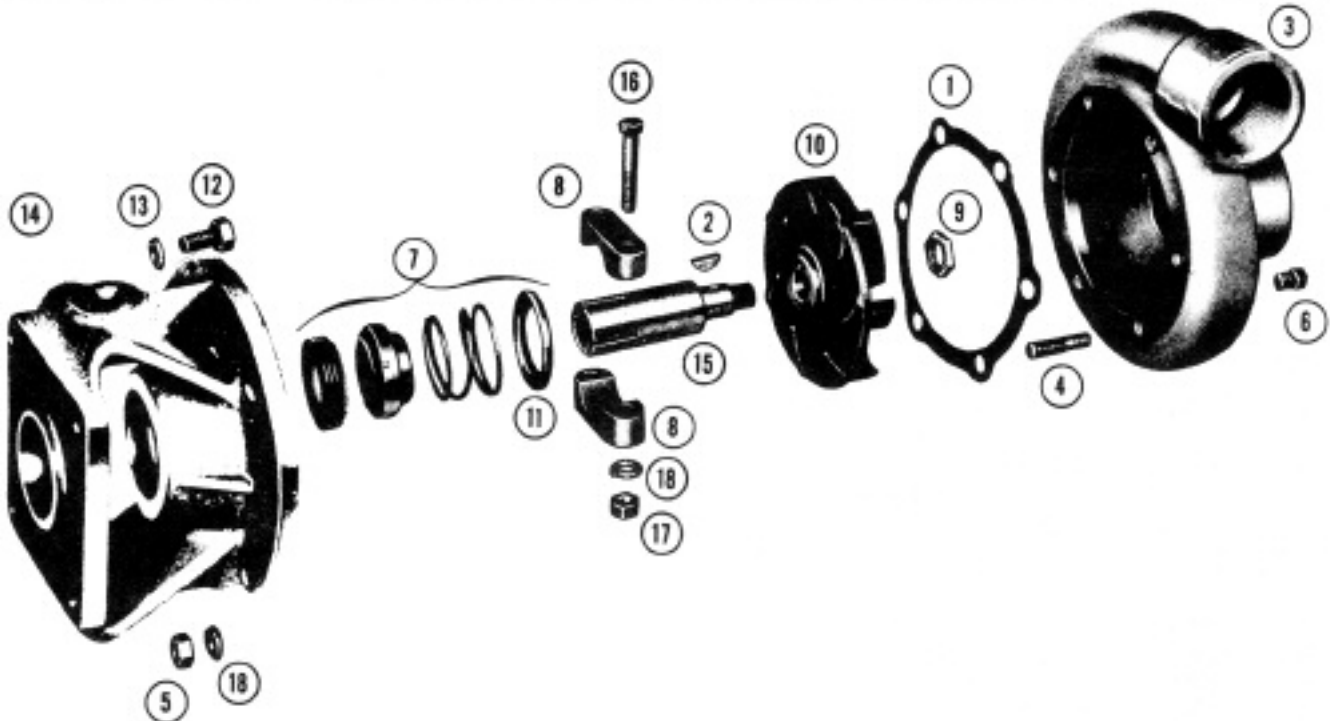


MP PUMPS SERVICE PARTS LIST

- Straight Centrifugal
- Pumpak
- Mechanical Seal

SERIES 110
1½" x 1¼" Pipe Size



IMPORTANT: When ordering parts, specify model and serial number shown on nameplate.

ITEM NO.	PART NO.	DESCRIPTION	QUANTITY REQUIRED PER MODEL			
			ROTATION	ALL MODELS LISTED ARE RIGHT HAND		
			PIPE SIZE	1½" x 1¼"	1½" x 1¼"	1½" x 1¼"
			METAL	CAST IRON	ALUMINUM	BRONZE
MODEL		23250	NA	23922		

HOUSING

	22922	Housing Assembly – Inc:	1		
3	21134	Housing – Cast Iron	1		
4	21243	Stud – SS. – 5/16"	6		
6	21255	Pipe Plug – SS. – 1/8" NPT	2		
	NA	Housing Assembly – Inc:		1	
3	NA	Housing – Aluminum		1	
4	21243	Stud – S.S. – 5/16"		6	
6	21255	Pipe Plug – S.S. – 1/8" NPT		1	
5	21244	Hex Nut – S.S. – 5/16"	6	6	
18	21238	Lockwasher – S.S. – 5/16"	6	6	
	22921	Housing Assembly – Inc:			1
3	21133	Housing – Bronze			1
4	21150	Stud – Br. – 5/16"			6
6	21185	Pipe Plug – Bronze – 1/8" NPT			1
5	21178	Hex Nut – BR. – 5/16"			6
18	21184	Washer – Br.			6
1	21149	Gasket	1	1	4



MP PUMPS, INC.

34800 BENNETT • FRASER, MI 48026-1686
 (586) 293-8240 • FAX (586) 293-8469
 (800) 563-8006 • www.mppumps.com

FORM 7051-A

PRINTED IN U.S.A.

ITEM NO.	PART NO.	DESCRIPTION	QUANTITY REQUIRED PER MODEL			
			ROTATION	ALL MODELS LISTED ARE RIGHT HAND		
			PIPE SIZE	1½" x 1¼"	1½" x 1¼"	1½" x 1¼"
			METAL	CAST IRON	ALUMINUM	BRONZE
			MODEL	23250	NA	23922

IMPELLER

10	22610	Impeller – 4" Dia. – C.I.	1		
10	NA	Impeller – Aluminum 4" Dia. Aluminum		1	
10	22609	Impeller – 4" Dia. – Bronze			1

SEAL

15	22699	Drive Sleeve S.S.	1	1	1
7	22272	Seal Assembly	1	1	1
11	22133	Seal Spring Retainer	1	1	1

CLAMP

8	23002	Clamp Assembly for 3/4" Shaft	1	1	1
16	21264	Capscrew – S.S. – 5/16"	2	2	2
17	21284	Hex Nut – S.S. – 5/16"	2	2	2
18	21238	Lockwasher – S.S. – 5/16"	2	2	2

ADAPTOR

14	22698	Adaptor – Cast Iron	1		
14	22696	Adaptor – Aluminum		1	
14	22697	Adaptor – Bronze			1
12	21242	Capscrew – S.S. – 5/16"	4	4	4
13	21238	Lockwasher – S.S. – 5/16"	4	4	4

PEDESTAL

N/S	26142	Pedestal	1	1	1
	22321	#11 Woodruff Key	1	1	1
	21695	Snap Ring			
	26085	Shaft	1	1	1
	22300	Bearing	2	2	2
13	21238	Lockwasher	4	4	4
12	21242	Capscrew	4	4	4



MP PUMPS, INC.

34800 BENNETT • FRASER, MI 48026-1686
 (586) 293-8240 • FAX (586) 293-8469
 (800) 563-8006 • www.mppumps.com

FORM 7051-A

PRINTED IN U.S.A.