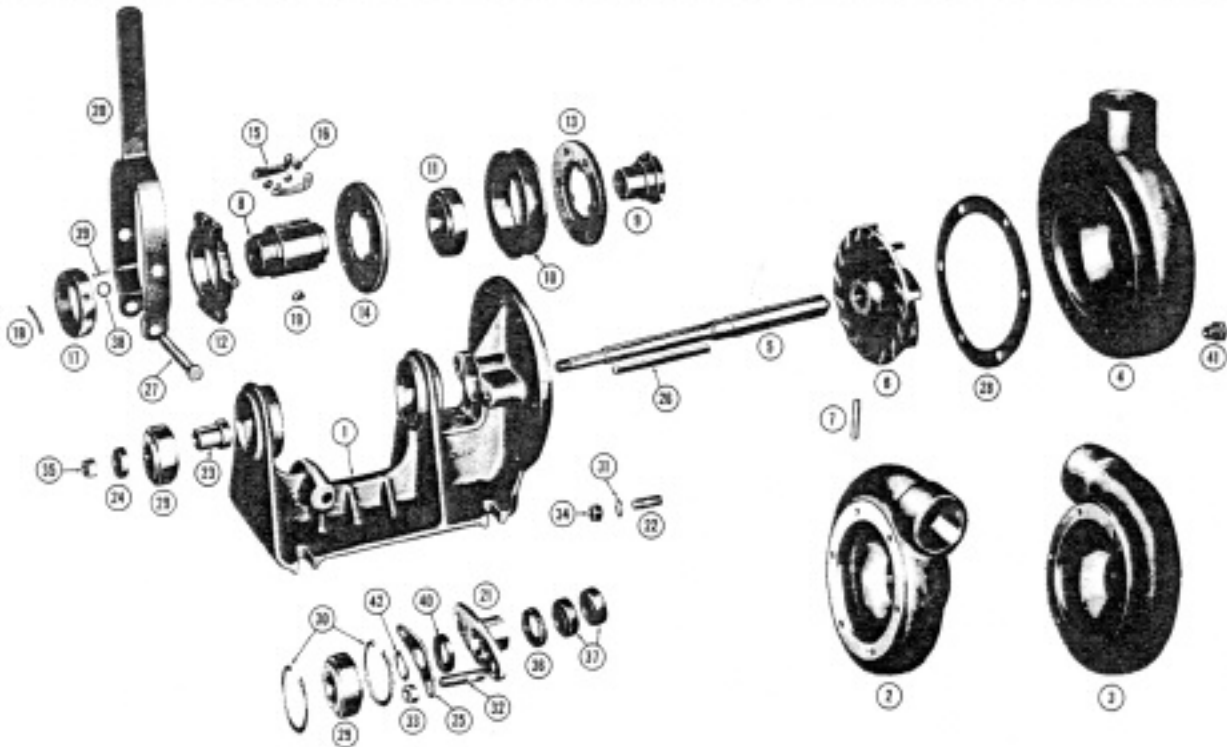


MP PUMPS SERVICE PARTS LIST

- Clutch Driven Straight Centrifugal Pumps (Bronze)
- Right Hand, Left Hand, Reversible Design • Stuffing Box Seal

SERIES 110 1½" x 1¼" Pipe Size
SERIES 130 2" x 1½" Pipe Size



IMPORTANT: When ordering parts, specify model and serial number shown on nameplate.
 N/S means "not shown" in exploded view of parts.

ITEM	PART NO.	DESCRIPTION	QUANTITY REQUIRED PER MODEL					
			METAL	ALL MODELS LISTED ARE BRONZE				
			ROTATION	R. HAND	L. HAND	R. HAND	L. HAND	REVERSIBLE
			PIPE SIZE	1-1/2" x 1-1/4"	1-1/2" x 1-1/4"	2" x 1-1/2"	2" x 1-1/2"	2" x 1-1/2"
MODEL NO.	NA	NA	NA	NA	NA			

HOUSING

	22921	Housing Assembly - Consisting of:						
2	21133	Housing - Bronze - R.H.						1
22	21150	Stud - Br. - 5/16"						6
41	21185	Pipe Plug - 1/8" NPT						1
	22923	Housing Assembly - Consisting of:						1
3	21136	Housing - Bronze - L.H.						1
22	21150	Stud - Br. - 5/16"						6
41	21185	Pipe Plug - 1/8" NPT						1
	22929	Housing Assembly - Consisting of:						1
2	21167	Housing - Bronze - R.H.						1
22	21150	Stud - Br. - 5/16"						6
41	21185	Pipe Plug - 1/8" NPT						1
	22931	Housing Assembly - Consisting of:						1
3	21170	Housing - Bronze - L.H.						1
22	21150	Stud - Br. - 5/16"						6
41	21185	Pipe Plug - 1/8" NPT						1
	22949	Housing Assembly - Consisting of:						1
4	21617	Housing - Bronze - Reversible						1
22	21150	Stud - Br. - 5/16"						6
41	21185	Pipe Plug - 1/8" NPT						1



MP PUMPS, INC.

34800 BENNETT • FRASER, MI 48026-1688
 (586) 293-8240 • FAX (586) 293-8469
 (800) 563-8006 • www.mppumps.com

FORM 7013-A

PRINTED IN U.S.A.

ITEM	PART NO.	DESCRIPTION	QUANTITY REQUIRED PER MODEL					
			METAL	ALL MODELS LISTED ARE BRONZE				
			ROTATION	R. HAND	L. HAND	R. HAND	L. HAND	REVERSIBLE
			PIPE SIZE	1-1/2" x 1-1/4"	1-1/2" x 1-1/4"	2" x 1-1/2"	2" x 1-1/2"	2" x 1-1/2"
MODEL NO.	23184	23132	23183	23131	21681			

IMPELLER

5	21674	Shaft & Impeller Assembly - Inc:	1	1			
	21664	Shaft - 3/4"	1	1			
6	21139	Impeller	1	1			
7	21161	Pin - Br. - 3/16"	1	1			
5	21665	Shaft & Impeller Assembly - Inc:				1	
	21664	Shaft - 3/4"				1	
6	21174	Impeller				1	
7	21161	Pin - Br. - 3/16"				1	
5	21666	Shaft & Impeller Assembly - Inc:				1	
	21664	Shaft - 3/4"				1	
6	21180	Impeller				1	
7	21161	Pin - Br. - 3/16"				1	
5	21667	Shaft & Impeller Assembly - Inc:					1
	21664	Shaft - 3/4"					1
6	21619	Impeller					1
7	21161	Pin - Br. - 3/16"					1

BEARING

29	21159	Ball Bearing	2	2	2	2	2
30	21675	Snap Ring - Front Bearing	2	2	2	2	2
42	21157	Shim	U.A.R.*	U.A.R.*	U.A.R.*	U.A.R.*	U.A.R.*
23	21676	Spacer - Rear Bearing	1	1	1	1	1
24	21677	Clamp Washer - Rear Bearing	1	1	1	1	1
26	21678	Key	1	1	1	1	1

PACKING GLAND

21	21140	Packing Gland	1	1	1	1	1
37	21188	Packing - Set - Overhaul	1 Set	1 Set	1 Set	1 Set	1 Set
36	21153	Packing - Service	U.A.R.*	U.A.R.*	U.A.R.*	U.A.R.*	U.A.R.*
32	21751	Stud - Packing Gland	2	2	2	2	2
25	21189	Nut Lock - Packing Gland	1	1	1	1	1
33	21178	Hex Nut - 5/16"-24 - Packing Gland	2	2	2	2	2
40	21198	Slinger	1	1	1	1	1

CLUTCH

8	NA	Clutch Assembly - Consisting of:	1	1	1	1	1
	NA	Hub (Long) - Steel - 2-19/32"	1	1	1	1	1
9	21672	Hub (Short) - Steel - 1-9/16"	1	1	1	1	1
10	21670	Pulley	1	1	1	1	1
11	21662	Bearing - Pulley	1	1	1	1	1
	21668	Clutch Parts - Including:	1	1	1	1	1
	NA	Collar Assembly	1	1	1	1	1
13	NA	Pressure Plate Assembly	1	1	1	1	1
14	NA	Pressure Plate Assembly (Hardened)	1	1	1	1	1
15	NA	Lever	6	6	6	6	6
16	NA	Rollers	9	9	9	9	9
17	22942	Adjusting Nut	1	1	1	1	1
N/S	22941	Adjusting Nut Screw	1	1	1	1	1
18	NA	Lock Spring	1	1	1	1	1
19	NA	Key	1	1	1	1	1

BODY

1	NA	Body	1	1	1	1	1
20	21673	Clutch Lever	1	1	1	1	1
27	21679	Shaft - Clutch Lever	1	1	1	1	1
35	21125	Hex Nut - 7/16"-20 - Shaft	1	1	1	1	1
38	21233	Plain Washer - 3/8" - Clutch Shaft	2	2	2	2	2
39	21507	Cotter Pin - Clutch Shaft	1	1	1	1	1
28	21149	Gasket 0.010" (4 per set)	1 Set	1 Set	1 Set	1 Set	1 Set
31	21184	Washer - 5/16" - Body to Housing	6	6	6	6	6
34	21179	Hex Nut - 5/16"-18 - Body to Housing	6	6	6	6	6

*Use as required.



MP PUMPS, INC.

34800 BENNETT • FRASER, MI 48026-1686
 (586) 293-8240 • FAX (586) 293-8469
 (800) 563-8006 • www.mppumps.com

FORM 7013-A

PRINTED IN U.S.A.