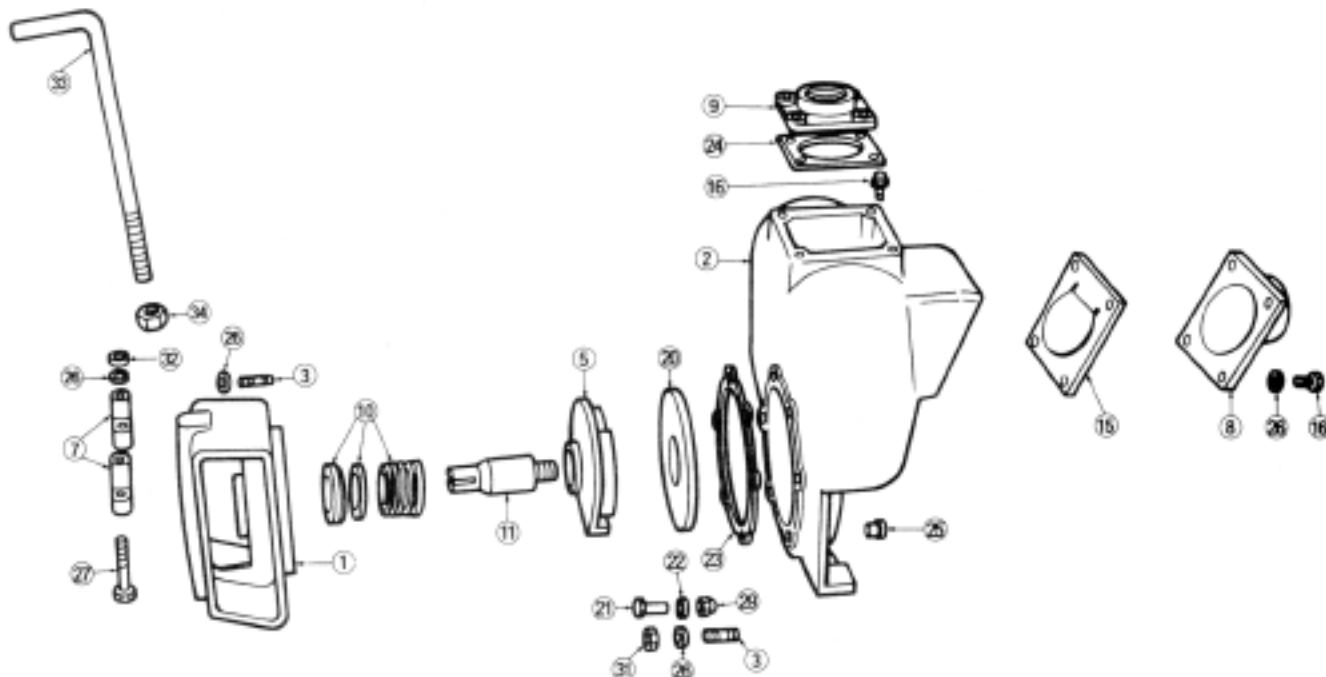


MP PUMPS SERVICE PARTS LIST

- Self-Priming
- Engine Drive

FLOMAX 5 1 1/2" x 1 1/2" Pipe Size
FLOMAX 8 2" x 2" Pipe Size



ITEM NO.	PART NO.	DESCRIPTION	QUANTITY REQUIRED PER MODEL							
			CAST IRON		ALUMINUM		BRONZE			
			FLOMAX							
			5	8	5	8	5	8		
		WITH ENGINE	21298	21323	21296	21321	21297	21322		
		REPLACEMENT PUMP	21302	21327	21300	21325	21301	21326		
		PUMPAK WITH BASE AND FASTENERS	21306	21332	21304	21330	21305	21331		

HOUSING

2	23021	Housing Assembly — Cast Iron — Inc:	1	1						
		Housing — Cast Iron	1	1						
16	21242	Capscrew — Flange: Dis & Suc	8	8						
3	24965	Capscrew S.S., 5/16" x 3/4"	6	6						
N/S	21238	Lockwasher — 5/16"	8	8						
2	23019	Housing Assembly — Aluminum — Inc:			1	1				
		Housing — Aluminum			1	1				
16	21242	Capscrew — Flange: Dis & Suc			8	8				
3	24965	Capscrew S.S., 5/16" x 3/4"			6	6				
N/S	21238	Lockwasher — 5/16"			8	8				
2	23020	Housing Assembly — Bronze — Inc:					1	1		
		Housing — Bronze					1	1		
16	21242	Capscrew — Flange: Dis & Suc					8	8		
3	24965	Capscrew S.S., 5/16" x 3/4"					6	6		
N/S	21238	Lockwasher — 5/16"					8	8		
15	23022	Flapper Assembly		1	1	1	1	1	1	
23	22255	Gasket — Housing to Adaptor	1	1	1	1	1	1	1	
24	22256	Gasket — Outlet Flange	1	1	1	1	1	1	1	
24	25933	Gasket — EPDM — Optional	1	1	1	1	1	1	1	
25	21267	Drain Plug	1	1	1	1	1	1	1	



MP PUMPS, INC.

34800 BENNETT • FRASER, MI 48026-1686
 (586) 293-8240 • FAX (586) 293-8469
 (800) 563-8006 • www.mppumps.com

FORM 7001-F

PRINTED IN THE U.S.A. (2-03)

MP PUMPS SERVICE PARTS LIST

ITEM NO.	PART NO.	DESCRIPTION	QUANTITY REQUIRED PER MODEL					
			CAST IRON		ALUMINUM		BRONZE	
			5	8	5	8	5	8
			21298	21323	21296	21321	21297	21322
		FLOMAX						
		WITH ENGINE	21302	21327	21300	21325	21301	21326
		REPLACEMENT PUMP						
		PUMPAK WITH BASE AND FASTENERS	21306	21332	21304	21330	21305	21331
FLANGE								
8	22263	Flange — Inlet — 1-1/2" — Cast Iron	1					
8	22387	Flange — Inlet — 2" — Cast Iron		1				
8	22261	Flange — Inlet — 1-1/2" — Aluminum			1			
8	22385	Flange — Inlet — 2" — Aluminum				1		
8	22262	Flange — Inlet — 1-1/2" — Bronze					1	
8	22386	Flange — Inlet — 2" — Bronze						1
9	22266	Flange — Outlet — Cast Iron — 1-1/2"	1					
9	22311	Flange — Outlet — Cast Iron — 2"		1				
9	22264	Flange — Outlet — Aluminum — 1-1/2"			1			
9	22309	Flange — Outlet — Aluminum — 2"				1		
9	22265	Flange — Outlet — Bronze — 1-1/2"					1	
9	22310	Flange — Outlet — Bronze — 2"						1
WEAR PLATE								
20	23024	Wear Plate Assembly — Steel — Inc:	1	1				
		Wear Plate — Steel	1	1				
21	21249	Flat Head Screw — 5/16"	2	2				
22	21248	Annular Gasket	2	2				
20	22270	Wear Plate Assembly — Aluminum — Inc:			1	1		
		Wear Plate — Aluminum			1	1		
21	21249	Flat Head Screw — 5/16"			2	2		
22	21248	Annular Gasket			2	2		
20	22271	Wear Plate Assembly — Bronze — Inc:					1	1
		Wear Plate — Bronze					1	1
21	21249	Flat Head Screw — 5/16"					2	2
22	21248	Annular Gasket					2	2
29	21237	Acorn Nut — S.S. — 5/16"	2	2	2	2	2	2
IMPELLER								
5	22293	Impeller — Cast Iron	1	1				
5	22294	Impeller — Stainless Steel		1	1	1	1	1
5	22291	Impeller — Aluminum			1	1		
5	22292	Impeller — Bronze					1	1
N/S	22655	Impeller Jam Nut — Stainless Steel		1	1	1	1	1
CLAMP								
7	23002	Clamp Assembly — Includes:	1	1	1	1	1	1
		Clamp	1	1	1	1	1	1
27	21264	Capscrew 5/16"	2	2	2	2	2	2
32	21284	Hex Nut 5/16"	2	2	2	2	2	2
26	21238	Lockwasher 5/16"	2	2	2	2	2	2
33	21938	Handle	1	1	1	1	1	1
34	22637	Hex Nut 1/2"	1	1	1	1	1	1
SEAL								
10	22272	Seal Assembly — Self-lubricated — Inc:	1	1	1	1	1	1
11	22286	Drive Sleeve — Stainless Steel 3/4" Bore	1	1	1	1	1	1
ADAPTOR								
1	22247	Adaptor — Cast Iron	1	1				
1	22245	Adaptor — Aluminum			1	1		
1	22246	Adaptor — Bronze					1	1
BASE								
N/S	21955	Mounting Base	1	1	1	1	1	1
N/S	21278	Capscrew — S.S. — 5/16" — Adaptor to Engine	4	4	4	4	4	4
N/S	21292	Capscrew — S.S. — 5/16" — Engine to Base	4	4	4	4	4	4
N/S	21238	Lockwasher — S.S. — 5/16" x 1/8"	8	8	8	8	8	8
N/S	24984	Hexnut CPS — 5/16" — 18 x 1/2" x 17/64"	4	4	4	4	4	4



MP PUMPS, INC.

34800 BENNETT • FRASER, MI 48026-1686
(586) 293-8240 • FAX (586) 293-8469
(800) 563-8006 • www.mppumps.com

FORM 7001-F

PRINTED IN THE U.S.A. (2-03)