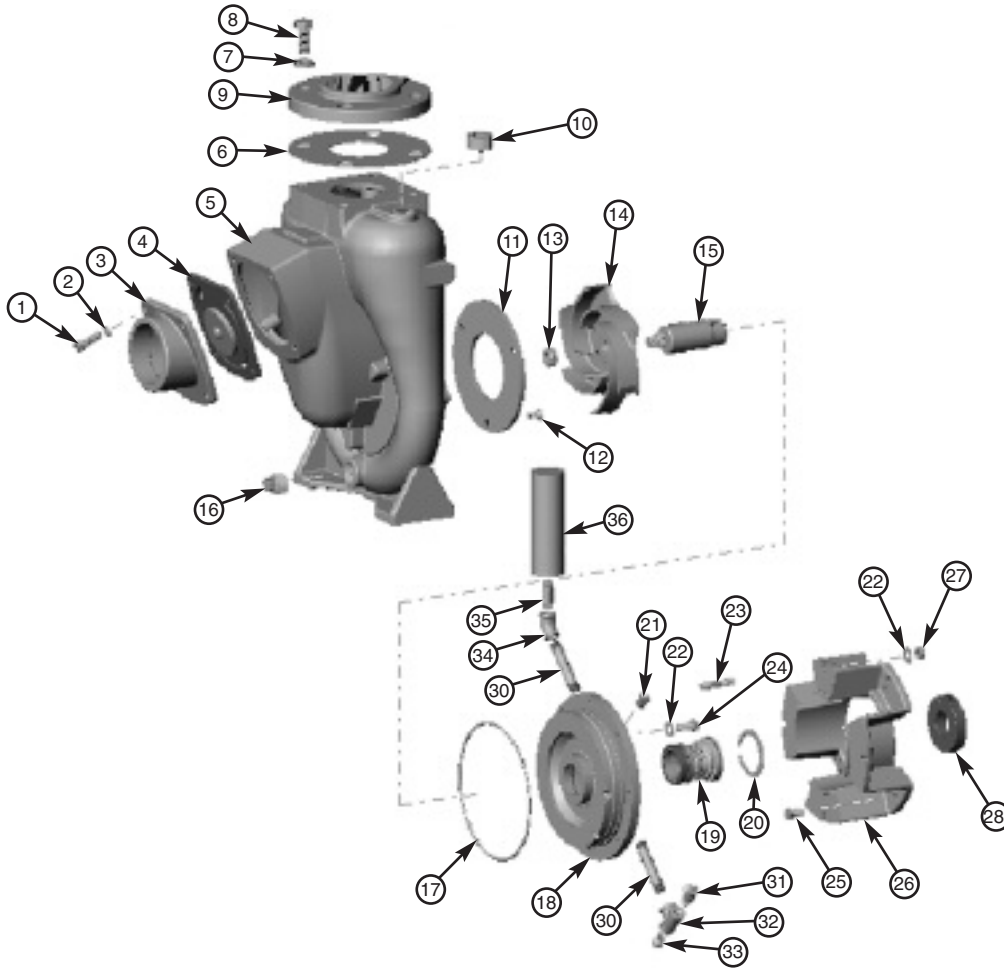


MP PUMPS SERVICE PARTS LIST

FLOMAX® 30 Double Seal

CC Pumpak



PART NO.	ITEM NO.	DESCRIPTION	QTY.	PART NO.	ITEM NO.	DESCRIPTION	QTY.
21274	1	Capscrew SS 3/8-16 x 1.25"	4	30660	19	Double Mech. Seal - 1.5" T-21	1
21266	2	Lockwasher SS 3/8"	6	29335	20	Int. Snap Ring	1
40537	3	Inlet Flange	1	33639	21	Pipe Plug - 1/4" NPT	2
42147	4	Flapper Assembly*	1	28053	22	Washer SS - Flat 3/8	8
31822	5	Housing	1	33161	23	Stud SS - 3/8-16 x 2"	4
32034	6	Gasket*	1	21251	24	Capscrew SS - 3/8-16 x .875"	4
26853	7	Lockwasher - 5/8"	4	33160	25	Capscrew SS - 7/16-14 x .75"	4
32018	8	Capscrew SS 5/8-11 x 1.5"	4	31829	26	Engine Adapter	1
32033	9	Discharge Flange - 3" NPT	1	21268	27	Hex Nut SS - 3/8-16	6
22379	10	Pipe Plug - 1" NPT	1	22356	28	Drive Clamp	2
31830	11	Wearplate*	1	21269	29	Capscrew SS - 3/8-16 x 2.25"	2
32026	12	Flat Head Screw SS 5/16-18 x .75"	3	41652	30	Niple Stl - 1/4" NPT x 3" LG	2
29194	13	Hex Jam Nut SS 5/8-18"	1	31733	31	Relief Valve - 1/4" NPT (90 PSI)	1
33163	14	Impeller - 6.75" Dia.	1	31734	32	Pipe Tee - 1/4" NPT - 45 Deg.	1
31831	15	Drive Sleeve SS - 1" ID	1	31735	33	Grease Fitting - 1/4" NPT	1
41481	16	Pipe Plug - 3/4" NPT	1	41668	34	Elbow Stl - 1/4" NPT - 45 Deg.	1
32020	17	O-Ring Viton	1	28635	35	Pipe Nipple - 1/4" NPT x 1.5" LG	1
31827	18	Seal Housing DS	1	31732	36	Grease Reservoir - 1/4" NPT	1

*-RECOMMENDED REPLACEMENT PARTS



MP PUMPS, INC.

34800 BENNETT • FRASER, MI 48026-1686
 (586) 293-8240 • FAX (586) 293-8469
 (800) 563-8006 • www.mppumps.com

Form 7105-A

01/06