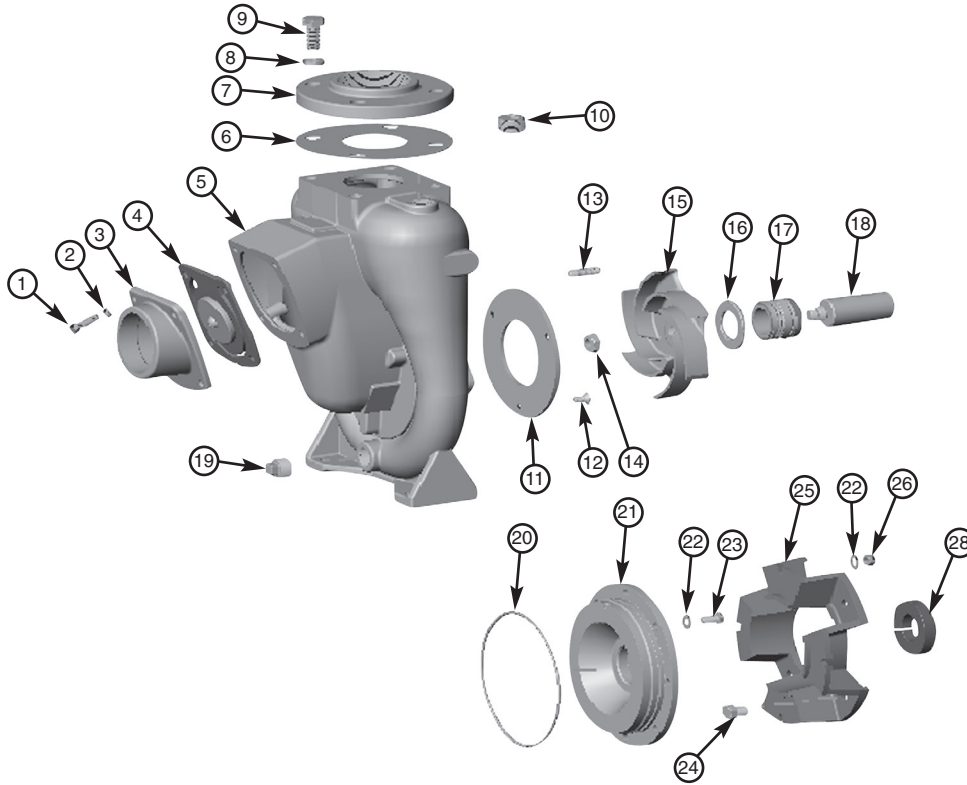


# MP PUMPS SERVICE PARTS LIST

**FLOMAX® 30 Single Seal**

**CC Pumpak**



PART NO.	ITEM NO.	DESCRIPTION	QTY.	PART NO.	ITEM NO.	DESCRIPTION	QTY.
21274	1	CAP SCREW S.S. - 3/8-16 X 1.25"	4	31094	18	DR SL S.S. - 1.0" I.D. PED/ENG	1
21266	2	LOCK WASHER - 3/8	4	31094	18	DR SL S.S. - 1.125" I.D. 184TC/ENG	1
40537	3	INLET FLANGE	1	31311	18	DR SL S.S. - 1.375" I.D. 215TC	1
42147	4	FLAPPER ASSEMBLY	1	31833	18	DR SL S.S. - 1.625" I.D. 256TC/286TC	1
31822	5	HOUSING	1	41481	19	PIPE PLUG - 3/4" NPT	1
32034	6	GASKET	1	32020	20*	O-RING - VITON	1
32033	7	DISCHARGE FLANGE - 3" NPT	1	31824	21	SEAL HSG 1.5 SEAL	1
26853	8	LOCK WASHER 5/8	4	31825	21	SEAL HSG 1.75 SEAL 256TC/286TC	1
32018	9	CAP SCREW S.S. - 5/8-11 X 1.50"	4	28053	22	WASHER S.S. - 3/8"	8
22379	10	PIPE PLUG - 1" NPT	1	21251	23	CAP SCREW S.S. - 3/8-16 X 7/8"	4
31830	11	WEAR PLATE	1	31235	24	CAP SCREW S.S. - 1/2-13 X 3/4"	4
32026	12	FLAT HD. SCREW S.S. - 5/16-18 X .75"	3	31829	25	ADAPTER - ENGINE	1
21261	13	STUD S.S. - 3/8-16 X 1.63"	4	31907	25	ADAPTER - 184TC/215TC	1
29194	14	HEX JAM NUT S.S. - 5/8-18	1	31892	25	ADAPTER - 256TC	1
31819	15	IMPELLER - 7.0" DIA.	1	33688	25	ADAPTER - 286TSC	1
33177	15	IMPELLER - 6.75" DIA.	1	21268	26	HEX NUT S.S. - 3/8-16	4
33178	15	IMPELLER - 6.35" DIA.	1	23039	27	DR CLAMP 1.00 SL ENG	1
31838	16	SPACER S.S. T-2100 ONLY	1	31099	27	DR CLAMP 1.125 SL 184TC	1
31374	17	MECH. SEAL - 1.50" T-2100	1	31312	27	DR CLAMP 1.375 SL 215TC	1
26685	17	MECH. SEAL - 1.75" T-21	1	33036	27	DR CLAMP 1.625 SL 256TC/286TC	1

\*-RECOMMENDED REPLACEMENT PARTS



34800 BENNETT • FRASER, MI 48026-1686  
 (586) 293-8240 • FAX (586) 293-8469  
 (800) 563-8006 • www.mppumps.com

**Form 7096-A**

07/10