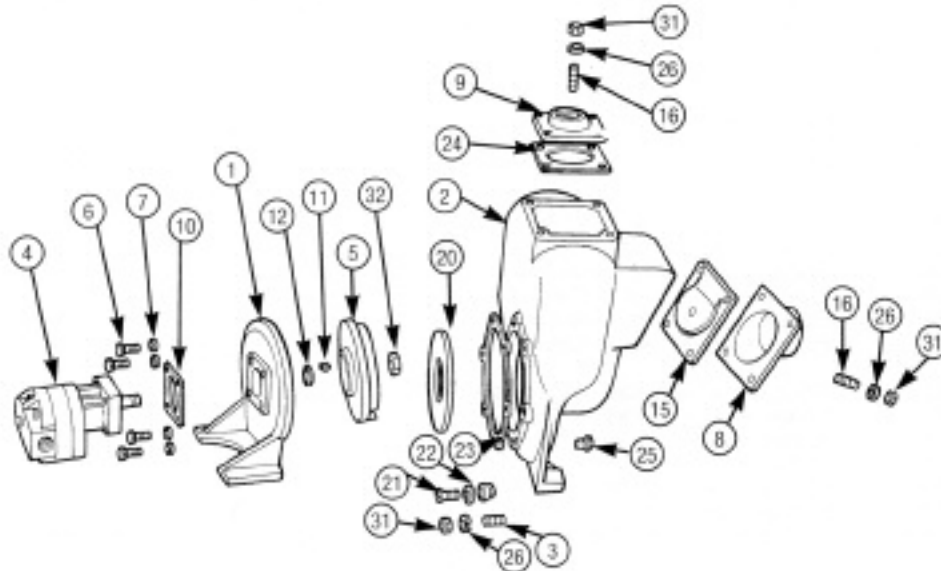


MP PUMPS SERVICE PARTS LIST

- Hydraulic Motor Drive
- Self-Priming
- Sealless

FLOMAX 10 2" x 2" Pipe Size
FLOMAX 15 3" x 3" Pipe Size



IMPORTANT: When ordering parts, specify model and serial number shown on nameplate.
 N/S means not shown in exploded view of parts.

ITEM	PART NO.	DESCRIPTION	QUANTITY REQUIRED PER MODEL		
			FLOMAX 10-2"	FLOMAX 15-3"	
			CAST IRON	ALUMINUM	BRONZE

HOUSING

2	24304	Housing Assembly — Cast Iron — Incl.:	1		
	22351	Housing — Cast Iron	1		
3	21261	Stud — S.S. — 3/8"	14		
		6 — Housing to Adaptor			
		8 — Inlet and Outlet			
25	21267	Drain Plug — S.S. — 1/4" NPT	1		
2	24302	Housing Assembly — Aluminum — Incl.:		1	
	22349	Housing — Aluminum		1	
3	21261	Stud — S.S. — 3/8"		14	
		6 — Housing to Adaptor			
		8 — Inlet and Outlet			
25	21267	Drain Plug — 1/4" NPT		1	
2	24303	Housing Assembly — Bronze — Incl.:			1
	22350	Housing — Bronze			1
3	21261	Stud — S.S. — 3/8"			14
		6 — Housing to Adaptor			
		8 — Inlet and Outlet			
25	21267	Drain Plug — S.S. — 1/4" NPT			1
31	21268	Hex Nut — S.S. — 3/8"	14	14	14
		6 — Adaptor to Housing			
		4 — Inlet Flange			
		4 — Outlet Flange			



34800 BENNETT • FRASER, MI 48026-1686
 (586) 293-8240 • FAX (586) 293-8469
 (800) 563-8006 • www.mppumps.com

FORM 7046-B

PRINTED IN U.S.A. (7-96)

ITEM	PART NO.	DESCRIPTION	QUANTITY REQUIRED PER MODEL			
			FLOMAX 10-2"	CAST IRON	ALUMINUM	BRONZE
			FLOMAX 15-3"			
HOUSING						
26	21266	Lockwasher — S.S. — 3/8" 6 — Adaptor to Housing 4 — Inlet and Flange 4 — Outlet Flange		14	14	14
15	23040	Flapper Assembly		1	1	1
23	22240	Gasket — Housing to Adaptor		4	4	4
24	22358	Gasket — Outlet Flange		1	1	1
FLANGES						
8	22369	Flange — 2" — Inlet — Cast Iron	1			
8	22367	Flange — 2" — Inlet — Aluminum		1		
8	22368	Flange — 2" — Inlet — Bronze				1
8	22468	Flange — 3" — Inlet — Cast Iron	1			
8	22466	Flange — 3" — Inlet — Aluminum		1		
8	22467	Flange — 3" — Inlet — Bronze				1
9	22372	Flange — 2" — Outlet — Cast Iron	1			
9	22370	Flange — 2" — Outlet — Aluminum		1		
9	22371	Flange — 2" — Outlet — Bronze				1
9	22471	Flange — 3" — Outlet — Cast Iron	1			
9	22469	Flange — 3" — Outlet — Aluminum		1		
9	22470	Flange — 3" — Outlet — Bronze				1
WEAR PLATE						
	22376	Wear Plate Assembly — Steel — Incl.:	1			
20	22244	Wear Plate — Steel	1			
21	21262	Flat Head Screw — S.S. — 3/8"	2			
22	21271	Annular Gasket — 5/8"	2			
	22374	Wear Plate Assembly — Aluminum — Incl.:		1		
20	22242	Wear Plate — Aluminum		1		
21	21262	Flat Head Screw — S.S. — 3/8"		2		
22	21271	Annular Gasket — 5/8"		2		
	22375	Wear Plate Assembly — Bronze — Incl.:				1
20	22243	Wear Plate — Bronze				1
21	21262	Flat Head Screw — S.S. — 3/8"				2
22	21271	Annular Gasket — 5/8"				2
29	21263	Acorn Nut — S.S. — Wear Plate — 3/8"	2	2		2
IMPELLER						
5	25480	Impeller — Cast Iron	1			
5	25520	Impeller — Aluminum		1		
5	25518	Impeller — Bronze				1
11	21163	Woodruff Key	1	1		1
32	22655	Nut, Jam, Impeller — S.S.	1	1		1
ADAPTOR						
1	25464	Adaptor — Cast Iron	1			
1	25524	Adaptor — Aluminum		1		
1	25522	Adaptor — Bronze				1
10	24009	Gasket	1	1		1
HYDRAULIC MOTOR ASSEMBLY						
4	25684	Hydraulic Motor — Includes Snap Ring #25482	1	1		1
12	25482	Snap Ring	1	1		1
7	21238	Lockwasher — S.S. — 5/16"	4	4		4
6	21292	Capscrew — S.S. — 5/16" x 1-1/2"	4	4		4



MP PUMPS, INC.

34800 BENNETT • FRASER, MI 48026-1686
 (586) 293-8240 • FAX (586) 293-8469
 (800) 563-8006 • www.mppumps.com

FORM 7046-B

PRINTED IN U.S.A. (7-96)